



The Pavilion Conference and Reception Centre

Technical Specifications and Venue Information

Address: Adrian McClintock Park, 77 Exhibition Road Southside:

Office hours: 8:00-4:00pm Monday to Friday and during events.

Phone: 07 5481 0824

Mobile: 0437 347 329

Email: thepavilion@gympie.qld.gov.au

Overview.....	3
Auditorium.....	3
Stage.....	4
Atrium.....	4
Technical and Other Equipment.....	5
Lighting.....	5
Audio.....	6
Vision.....	8
Staging equipment.....	8
Function equipment.....	8
Tableware and Glassware.....	9
Meeting Rooms.....	11
Madill Room.....	11
Apex Room.....	11
Smith and Bishop Rooms.....	12
Display Areas.....	12
Meeting Room Equipment.....	13
Other Presentation Equipment.....	13
Catering and Bar Facilities.....	15
Caterer’s Kitchen.....	15
Apex Kitchen.....	15
Cattleman’s Bar.....	16
Walker’s Kiosk.....	16
Apex Bar.....	16
Accessibility.....	17
Other Facilities.....	17
Appendices.....	18

Overview

The Pavilion Conference and Reception Centre is a multi-purpose space with a large flat-floor auditorium space with bar and commercial catering facilities downstairs, and a wraparound mezzanine floor; comprising meeting rooms, display spaces and a commercial kitchen and bar, upstairs. The first floor is accessible via a lift.

The Pavilion spaces are supplied with audio visual equipment, including microphones, speakers, and presentation equipment, as well as chairs, tables, tablecloths and catering equipment. Downstairs, the Pavilion team can provide full stage-lighting, staging, and audio-visual support. Wi-Fi access is available throughout the venue.

Auditorium

Downstairs this flexible multifunction space has a small stage and large function area with access to the Atrium and courtyards and the fully licenced Cattleman's Bar. The Auditorium accommodates gala dinners, functions, celebrations, and performances.

Facilities:

- Audio Visual facilities
- Stage lighting
- Commercial kitchen
- Cattleman's Bar
- Kiosk (servery)
- Pulastic sports floor

The main area accommodates flat floor seating and also has a Pulastic sports floor suitable for basketball, volleyball, and gymnastics.

There is a small stage along one side with access steps both sides of the stage.

The Auditorium is also equipped with a catering kitchen, bar, and servery.

While the Auditorium is not air-conditioned, it is equipped with industrial fans to keep the venue cool in hot weather.

Capacity:

- Theatre Style - 600
- Banquet Style - 320

Auditorium Dimensions

Length	22.6M
Width	31.5M
Ceiling Height	11.83M
Lighting Grid	9-9.6M

Stage

The stage is a proscenium arch stage with low clearance and limited wing space on either side. The stage is raised above the level of the dressing rooms accessed by 3 steps backstage. The stage is also accessible via a vertical platform lift in the O.P (opposite prompt) wings. There is a dressing room on either side of the stage, complete with makeup benches, mirrors, showers, and toilets, and access to a washing machine. The stage has a removal cross-over.

Stage_Dimensions

Width at Proscenium	11.6 M
Full width	17.7M
Depth from apron to back wall	8.9M
Depth from setting line to back wall	7.6M
Depth from setting line to upstage tabs (Cyc)	4.3M
Depth to upstage crossover	6.2
Ceiling height	2.8-3.4
Stage height	0.78M

Atrium

The Atrium downstairs runs the full length of the building, separated from the main Auditorium by a row of pillars and motorized blinds. Roller doors along the side of the Atrium can be raised to provide full access to courtyard areas. The Atrium also features a glassed in area with 3 sliding doors to the outside courtyards.

Capacity:

- Cocktail Style – From 250

Atrium Dimensions

Length	35.6M
Width	5.6M

Glassed in Area Dimensions

Length	11.6M
Width	5.8M

Technical and Other Equipment

Lighting

Lighting positions

Front of House:

4 x Front of House Lighting bars above the Auditorium floor
There is no access to the Front of House lighting bars.

Onstage

One lx bar at the downstage edge of the stage sitting just behind the Front of House curtain.
4 pieces of vertical truss provide boom bars on stage.
2 mobile boom bars are available for use front of house.

Control:

There are 3 control positions in use at the Pavilion. The Control room is located over the Auditorium, a second control position is established on the Mezzanine, and a production desk is set up at the rear of the Auditorium on the main floor.

Lighting Desks:

GrandMA Ultralight (6 Universe)
Jands Stage 12 manual desk – 12 fader Dimmers:
ChamSys lighting system

DMX

Wireless DMX	2 x W DMX A40100G5 Lite Transceiver (1 Universe) 1 x W DMX A40006G5 Lite Receiver (1 Universe)
Distribution	Chauvet DJ Data Stream 4- DMX splitter 2 in, 4x2 out, 2 thru

Power

32amp 3 Phase Outlet	2	Prompt side
3 phase distro with 6 x 240V outlets	1	Store
1 x Jands FP12 – 12 channel dimmer rack	1	Store
LSC lpack 12 outlet dimmers	2	Prompt side

Lighting Fixtures:

Make	Model	Type	Position	Wattage	Total
Selecon	PLCYC-1	LED Fixed Wash	On stage LX	140	2
Chauvet DJ	Slimpar Q12	LED wash	Onstage Booms		6
Light Emotion	Par LED	LED Wash	Onstage LX (backstage)		3
Light Emotion	Par LED		Onstage LX		2
Light Sky	1810	LED Moving Wash	Front of House LX	264	8

Light Sky	F330	Moving Spot	Front of House LX	460	4
Selecon	PLCYC-1	LED Fixed Wash	Front of House LX	140	4
Martin	Rush MH1	LED Moving Profile	Front of House LX	300	4
Prolite		Fresnel	Front of House LX	1000/1200	9
Prolite		Fresnel	Store	500/650	1
Profiles			Front of House LX	1000/	4
Par 64 LED	LED	LED PAR	Store		2
Event Lighting	PAR 18X40L	LED Wash	Store		3

Other Lighting and Effects

- One Prolite Follow-Spot 2000W
- One LMB-20 20 Inch Mirror Ball
- One Chavet DJ AM Haze machine

House Lights

House lights can be controlled from the control room, side of stage, and front of house.

Audio

Control & Amplification:

Mixer Consoles

Brand	Model	Features
Presonus	Studio Live AR16c	16 channel
PreSonus	StudioLive 2442	2442, 24 Channel, 8 aux sends, 2 stereo aux inputs, phtm power
PreSonus	StudioLive 16	16 Channel, 6 aux sends, 2 stereo aux inputs, phtm power
Behringer	X32 Digital Mixer	(2 stage boxes through digital snake)

Speakers:

Installed Speakers

Brand	Type	Function	Total
BOSE	802 series II	Roof speakers	4
BOSE	Column	Wall speakers	4 (2 pairs)

Portable Speakers

Brand	Type	Function	Total
Line 6	L3t 1400w speakers	Front of house	4
Line 6	Line 6 L3s 1200w subs	Fold Back	4
Line 6	Stage Source L2t - Active Speaker		3
LD Systems	Maui 28 G2	Front of house	2

Other Speakers

- 1 large portable speaker, Vonyx VSA Series with Bluetooth, USB Media Player, SD, and 2 portable Mics.
- 1 small portable speaker, Chiryo Challenger with Bluetooth, DVD/CD player and one handheld mic.

Microphones:

Make	Model	Detail / Accessories	Location	Total
Sennheiser	SK100	5 x Lapel mics 8 x Madonna Mics	Store (Case)	13
Sennheiser	EW100G3	Handhelds	Stage	3
Sennheiser	EW100G3	Handhelds	Apex Room	2
Sennheiser	eW100 G3	Handhelds	Offsite Event Kit	2
Shure	SM58		Store	2
Shure	SM57		Store	2
Samson		Lectern Mic	Stage Cabinet	3
SE7		Condenser Mic	Stage	3
SE7		Condenser Mic		4
Lewitt		7 pc Mic Drum Kit Set	Store	1
Unisound	EM-83D			2

Sennheiser A2003-UHF Passive Directional Antennae are installed in the Apex room and onstage.

Cabling

2 x Behringer Drop Boxes 16 Outlets

Audio Cable

The hall has a good stock of cable to accommodate the venue's equipment. Any additional equipment will require additional cable stock to be sourced.

Multicore

X32 Digital Multicore

Analogue Multicore can be sourced

DI boxes

Mono DI x 6
Stereo DI x 3

Vision

Distribution

Bluestream AV Distribution System	Matrix	4 outputs	1
	Base Transmitter	100mHD	2
	Transmitter	70mHD	3
	Receiver	70mHD	3

Projectors

Brand	Model	Lumens	Total	Location
Epson	EB- Ls10SF	4000 Lumens	2	Portable
Epson	EB-L895U	8000 ANSI lumens	1	Stage

Screens

Type		Brand		Size	Total	Location
Drop down screen	Rear projection			2800 x 2000	1	Onstage
Fast-fold screen	Rear projection	Elite	ESOD110HR	110 inch	3	Portable
Pull up screen	Front projection			2000mm x 1500mm	2	Portable
Smart TV	Monitor	Samsung		65 inch	2	Portable

Staging equipment

Access_Equipment:

Gorilla adjustable fibreglass platform ladder 1.5-2.4M
Little Giant 3 step fibreglass platform step ladder 5ft

Rigging

The Pavilion does not have a fly tower.

A chain motor with a capacity of 0.5 tonnes is installed in the centre of the main auditorium ceiling and controlled from Prompt side.

Risers

14 x Steel framed Timber Topped Risers x 1M W x 2M L*

With legs to suit at 350mm, 700mm, and step heights to 700 and skirts to suit all heights

*One stage riser is stored off site.

Acoustic Boards

12 x mobile Acoustic Boards- H 1702 x W 1800

Sandbags-

- Small 5kg – 10
- Large 10kg - 6

Function equipment

- 80 x Blow-mould tables 1800 x 750
- 724 x Sebel Progress Chairs, green

Tableware and Glassware

While not a fully equipped catering venue, the Pavilion can provide a limited range of tableware and glassware for up to 320 patrons.

For equipment not on this list, hirers are advised to provide their own.

Glassware

Equipment	Cattleman's	Apex	Total
Champagne Flutes	120	114	469
Wine glasses, tall, no line	76		76
Wine glasses, tall, line	68	0	
Beer glasses, Schooner, 285	320	0	320
Beer glasses, Schooner, 285	0	175	175
Beer glasses, midi pot 200	230	0	230
Water glasses, tumblers	0	0	290
Hi Ball Glasses	0	72	143

Tableware and serving ware

Equipment	Caterer's kitchen	Apex kitchen	Total
Large Dinner Plates	500	160	660
Side plates	500	160	660
Bread & butter plates	500	160	660
Bowls	500	160	660
Table knives	500	160	660
Table forks	500	160	660
Soup Spoons	500	160	660
Dessert Spoons	500	160	660
Teaspoons	500	160	660
Dessert Forks	500	160	660
Dessert knives	500	160	660
Steak knives	0	64	64

Equipment	Caterer's kitchen	Apex kitchen	Total
Tongs	0	24	24
Glass Jugs	0	18	
Oval Bowls	7	8	
Small Bowls	0	8	
Serving plates and platters	17	12	
Chafing dishes	15	0	15

Tea and Coffee

Equipment	Caterer's kitchen	Apex kitchen	Total
Coffee mugs	50	72	122
Coffee cups	500	160	660
Saucers	500	160	660
Espresso cups	0	23	23
Milk Jugs, vacuum	0	5	5
Milk jugs, ceramic	20	13	33
Hot water urns	2	3	5
Teapots		2	2
Coffee machine, Nespresso	0	1	1

A selection of coffee and tea is also available.

Food preparation

Equipment	Caterers kitchen	Apex kitchen	Total
Stock pots	4	3	7
Chopping boards	2	0	2
Bain Marie trays	3	0	3

Meeting Rooms

Upstairs, the Pavilion provides 4 meeting or event rooms and 2 display areas.

These facilities are provided with chairs, tables, whiteboards and projection capacity and also catering capacity, including coffee cups, plates, urns, tablecloths and so on.

Madill Room

The Madill Room is a self-contained meeting room with a private bathroom and external access. The Madill room is ideal for training and confidential meetings.

Features:

- Audio Visual facilities
- Private Bathroom
- Exterior access
- Air-Conditioning

Capacity:

- Theatre Style Capacity - 65
- Meeting capacity - Up to 40

Dimensions

Length	12.7M
Width	7.8M

Apex Room

The Apex room is an open plan space with a veranda and views over the racetrack. The Apex room is suitable for meetings, training, and functions. Open up the glass partitions to the Smith Bishop rooms and expand the capacity of the space to incorporate larger functions.

Features:

- Caterer's kitchen
- Bar
- Dance floor
- Audio Visual facilities
- Air-Conditioning

Capacity:

- Theatre Style Capacity - 110
- Meeting capacity - 52
- Function capacity - up to 150

Dimensions

Length	17.75M
Width	7.7M

Smith and Bishop Rooms

The Smith Bishop rooms are two adjacent rooms which can be used together or separately with the partitions closed. The Smith Bishop rooms are ideal for training and meetings.

- Theatre Style Capacity (combined) - 105
- Meeting capacity (Combined) - 60
- Audio Visual facilities
- Air-Conditioning

Smith Room

- Theatre Style Capacity - 65
- Meeting Capacity- 40
- Audio Visual facilities
- Air-Conditioning

Dimensions

Length	7.9M
Width	10.6M

Bishop Room

- Theatre Style Capacity - 35
- Meeting Capacity – 18
- Audio Visual facilities
- Air-Conditioning

Dimensions

Length	8.9M
Width	5.9M

Display Areas

Upstairs the Pavilion features two large open spaces, suitable for casual gatherings and displays, with views over the main Auditorium. Due to their unconventional lay-out, the Display Area dimensions are approximate.

Display Area 1 & 2

Length	15.8M
Width	10.6M

Display Area 3 & 4

Length	15M
Width	21.6M

Meeting Room Equipment

The meeting rooms are provided with audio visual and presentation equipment, chairs, tables, and whiteboards and also catering capacity, including coffee cups, plates, urns, and tablecloths.

Meeting Room Audio

The Meeting rooms share an installed audio system across all four spaces. The system is controlled from the Apex bar with individual room controls in each meeting room.

There are two Sennheiser microphones available for use in the meeting rooms.

Audio Centre MX Series Amp	1	Apex Room
Allen & Heath QU-SB Mixer	1	Apex Room
Bose Sound Processor	1	Apex Room
Audio Centre MX Series Amp	1	Apex Room
Bose Sound Processor	1	Apex Room

Projectors

Brand	Model	Lumens	Total	Location
Optoma	EH502 C2E	5000 ANSI lumens	1	Smith Room
Epson	EB-L260F	4600 ANSI lumens	3	Portable
Epson	EB- Ls10SF	4000 ANSI lumens	2	Portable

Screens

Type		Brand	Model	Size	Total	Location
Drop down screen	Front projection			2200mm x 1200mm	1	Smith Room
Drop down screen	Front projection			2200mm x 1200mm	1	Madill Room
Fast-fold screen	Rear projection	Elite	ESOD110HR	110 inch-2800 x	3	Portable
Pull up screen	Front projection			2000mm x 1500mm	2	Portable
Smart TV	Monitor	Samsung		65 inch	2	Portable

Other Presentation Equipment

- 2 Sennheiser microphones
- Lectern
- Presentation clicker
- Microphone stand

General Equipment	Total
Whiteboards, portable	4
Flip-top tables	24
Chairs, black	120
Square tables, café	12
Bar tables	8
Bar stools	14

Tea and Coffee Equipment	Brand	Total
Water glasses, tumblers	Libby Gibraltar 266ml	290
Coffee machine	Nespresso Zenius	1
Coffee cups		160
Saucers		160
Coffee mugs		122
Glass water canister with tap	Capacity 3 gallon	1
Glass water canisters with taps	Glass retro, capacity 4 gallon	4
Milk jugs, vacuum		6
Hot water urns	Birko	3

The Pavilion can also supply black tablecloths in a range of sizes.

Catering and Bar Facilities

While not a food service venue the Pavilion provides functional catering facilities for use by hirers and caterers, with two catering kitchens, two bars, and tableware and glassware to serve up to 320 patrons.

Caterer's Kitchen

Located downstairs between the Kiosk and the Atrium and adjacent to the Auditorium, the Caterer's Kitchen is a well-equipped commercial kitchen suitable for larger functions. With a zip boiler and a server hatch it can also be used to serve afternoon teas and lunches direct to patrons.

Equipment	Total
Rational -Combi Pro Combi Oven	1
Polar Upright double door Freezer	1
Astra/Patton walk-in Coldroom	1
Apuro Warming Oven	1
Waldorf 8 burner gas stove with Oven	2
Whirlpool Microwave	1
Zip auto boil wall installed hot water urn	1
Washtech commercial dishwasher	1

Apex Kitchen

Located adjacent to the Apex room and the Apex Bar, the Apex Kitchen is a commercial kitchen facility suitable for catering smaller functions.

Equipment	Total
Washtech Commercial Dishwasher	1
Salamander Grill (Wall)	2
Moffat Convothem Combi Oven	1
Astra Muller Walk in Coldroom and freezer	1
Food warmer lamps	2
Birko 40L wall mounted hot water urn	1
Panasonic Microwave	1
Bain Marie	1
Waldorf Gas Grill	1
Waldorf 8 burner gas stove with oven	1

Cattleman's Bar

The Cattleman's bar is a fully equipped and licenced bar located on the ground floor of the Pavilion next to the Auditorium. With access from the Atrium and courtyards, and capacity to be opened up on three sides, the Cattleman's bar can be the heart of your function.

Equipment	Total
Eswood Glass washer	1
Astra Walk-in Coldroom with servery doors	1

Serving Equipment	Total
Silver Ice Buckets	16
Ice Scoops	2
Serving Trays, black	11
Eskies, Large	2

Glassware	Total
Champagne flutes	120
Wine glasses, tall	79
Beer glasses, schooner, 285ml	320
Beer Glasses, midi pot 200ml	230
Water glasses, tumblers	145

Walker's Kiosk

Opposite the Cattleman's bar, with access from the Atrium and courtyards, and the capacity to be opened up on 2 sides, Walker's Kiosk provides a flexible space to serve and sell concessions for a performance or function.

Power

Ample 10amp

2 x 15amp

Equipment	Total
Double glass door fridge	1
Zip boiler	1

Apex Bar

Located upstairs in the Apex room, the Apex room is a fully licenced and stylishly presented bar at the heart of the upstairs function spaces.

Equipment	Total
Eswood Glass washer	1
Astra Walk-in Coldroom with servery doors	1

Serving Equipment	Total
Silver Ice Buckets	8
Glass Jugs	18
Ice Scoops	2
Serving Trays, black	6
Eskies	2

Glassware	Total
Champagne Flutes	114
Wine glasses, tall	107
Beer glasses, Schooner, 285ml	175
HI Ball	72

Accessibility

The Pavilion is not currently a fully accessible building but has some accessible features.

- 4 accessible parking bays located near the front door
- Lift access to the first floor
- Vertical Platform lift access to the stage
- 2 ambulatory bathrooms in the foyer
- Level access to the Auditorium and Atrium
- 2 accessible bathrooms, with showers, located in the Dressing Rooms.

Work to make the Pavilion more accessible is continuing.

Other Facilities

Loading Dock:

There is a loading dock located at the back of the stage and loading access at the rear of the building. There are other loading access areas at the front of the Pavilion.

Dressing Rooms

There is a dressing room on either side of the stage, complete with makeup benches, mirrors, toilets and showers, and nearby access to a washing machine.

Laundry / Wardrobe:

Washing Machine	Samsung Front Loader	1
Dryer		0
Clothes racks		2
Iron / ironing board		1

Services

The Pavilion team are ready to help with all your event and meeting needs from meetings to full performance support. In addition to technical services, the Pavilion can organise all your catering needs, from tea and coffee to fully catered events. The Pavilion is also a fully licenced venue and can supply a bar service for functions and events.

Contact

Address: Adrian McClintock Park, 77 Exhibition Road Southside:

Office hours: 8:00-4:00pm Monday to Friday and during events.

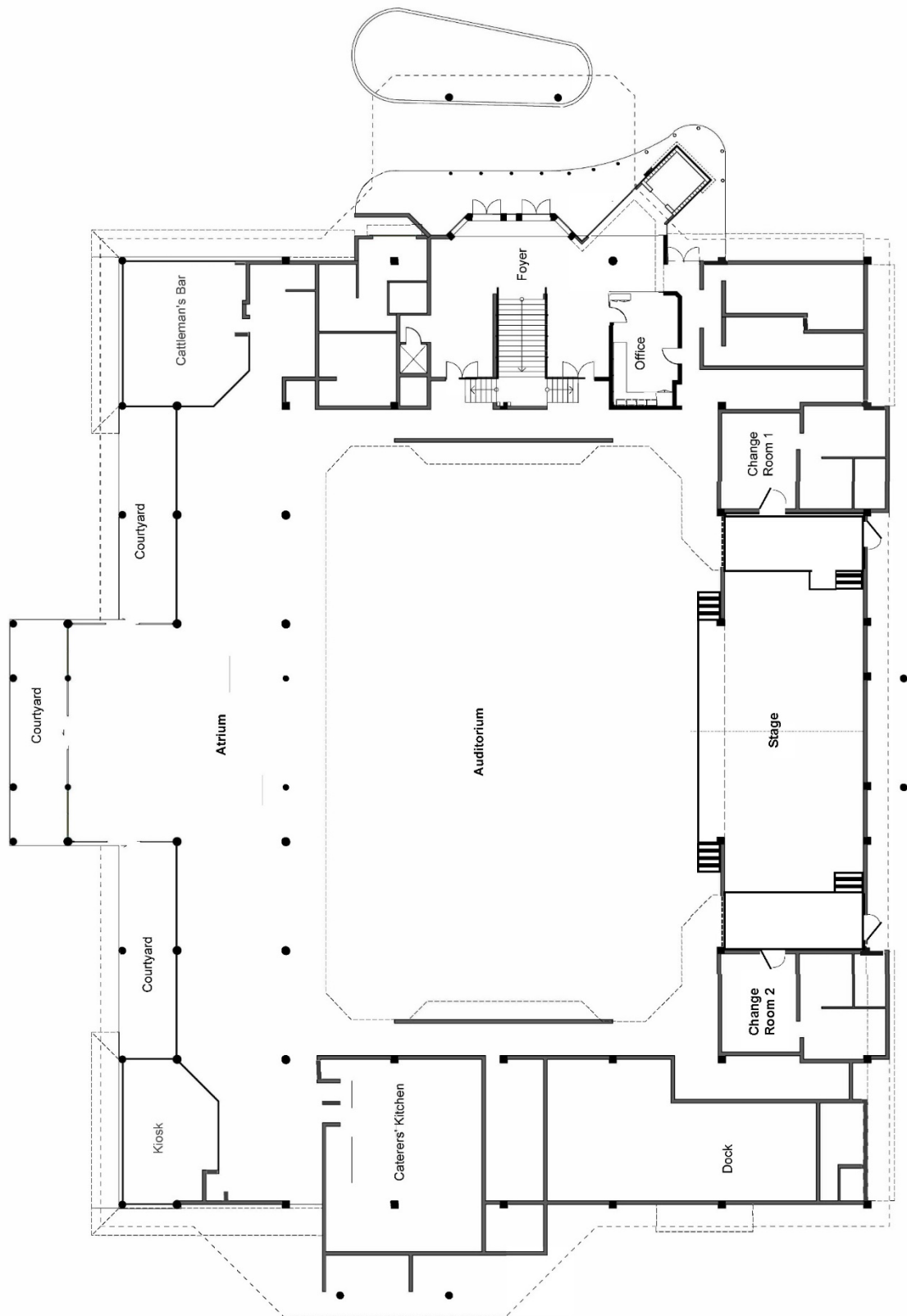
Phone: 07 5481 0824

Mobile: 0437 347 329

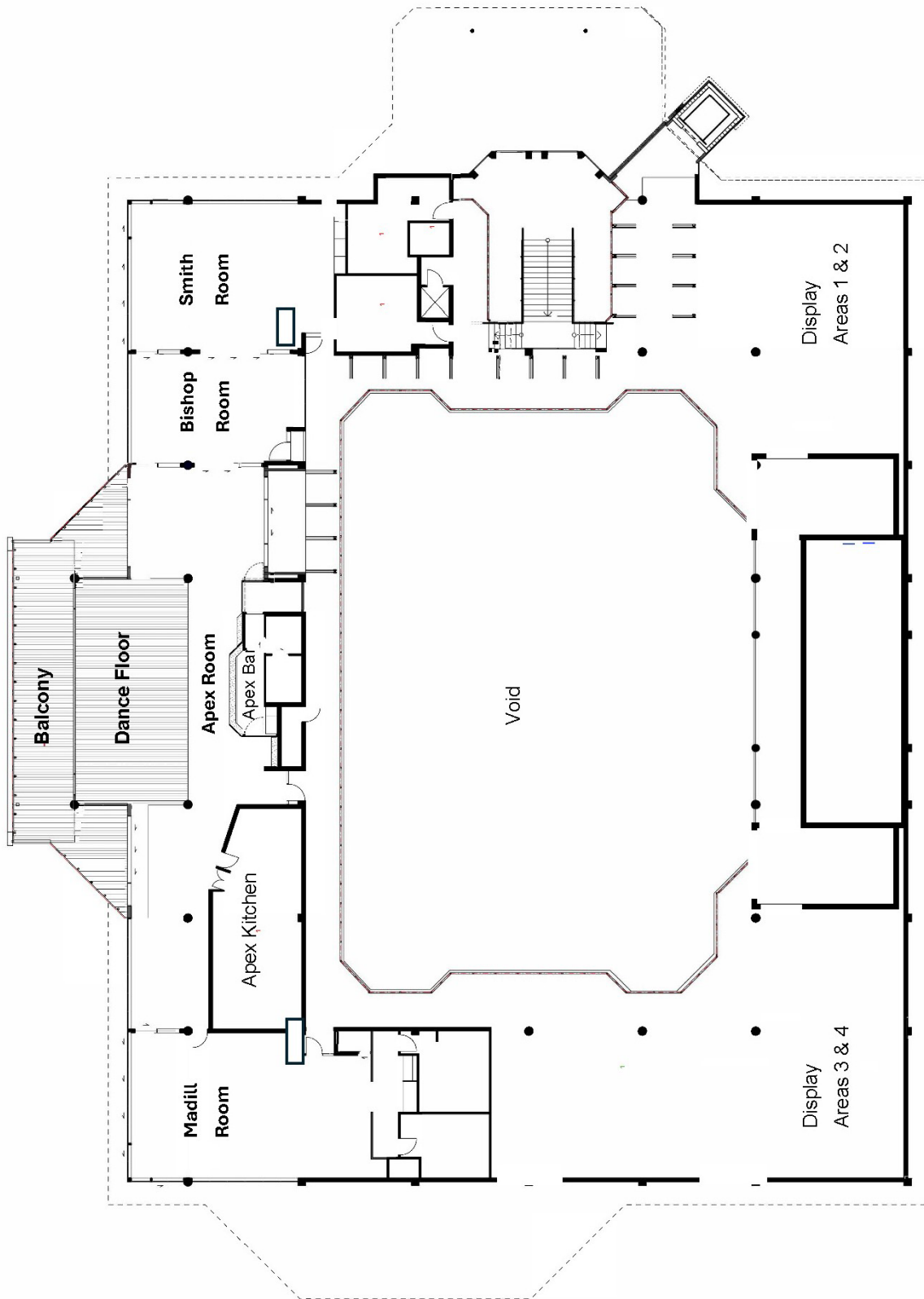
Email: thepavilion@gympie.qld.gov.au

Appendices

Appendix 1 Ground Floor Plan

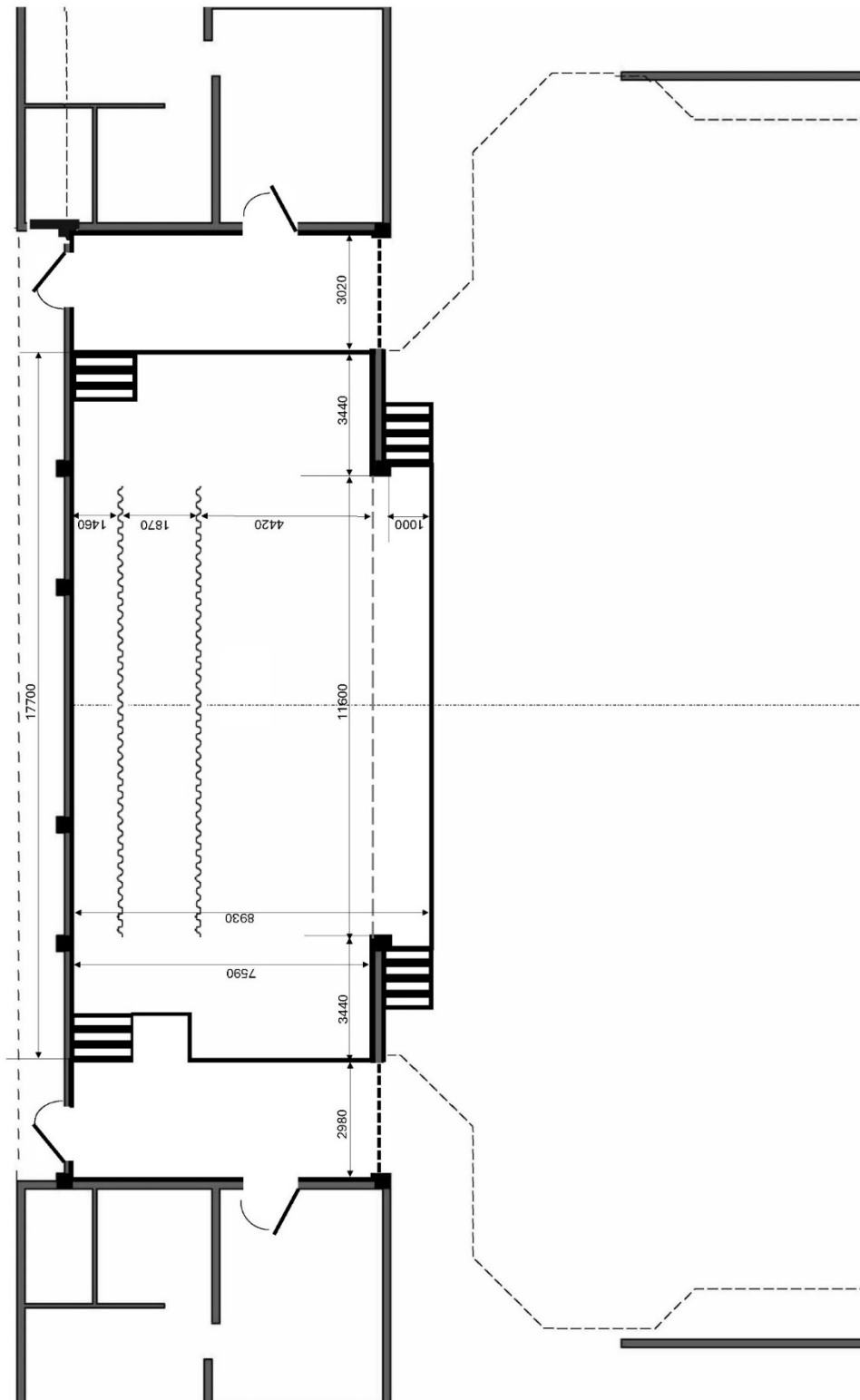


Appendix 2 First Floor Plan



Appendix 3

Appendix 3 Stage Plan



Pavilion Stage Plan November 2025
Scale approximate

Appendix 4 Seating Plan

