

STRATEGIC FRAMEWORK
KILKIVAN SHIRE
OUTLINE MAP

Map No.2 - Valuable Features and Land Use -
Rural Sector and Urban
Economic Development
(Indicative & Non-Statutory)

RURAL SECTOR

- Good Quality Agricultural Land (GQAL) (1a)
- Good Quality Pastoral Lands (1b)
- Intensive Cropping & Horticulture Focus (2)
- Balance Rural (3) (4)
- Possible Intensive Livestock Enterprise Areas (5)

NATURAL RESOURCES

- Plantations (State Government)
- Mining Tenure (Lease &/or License)

TOURISM OPPORTUNITY AREAS

- State Forest / Forest Reserve / National Park
- Water Resources
- Possible Major Agricultural - Environmental Tourism Areas
- Strategic Links / Circuits for Tourism

COMMERCIAL / COMMUNITY CENTRES (6) & (7)

- Village
- Shire Services - Community Emphasis
- Rural Service Centre

North

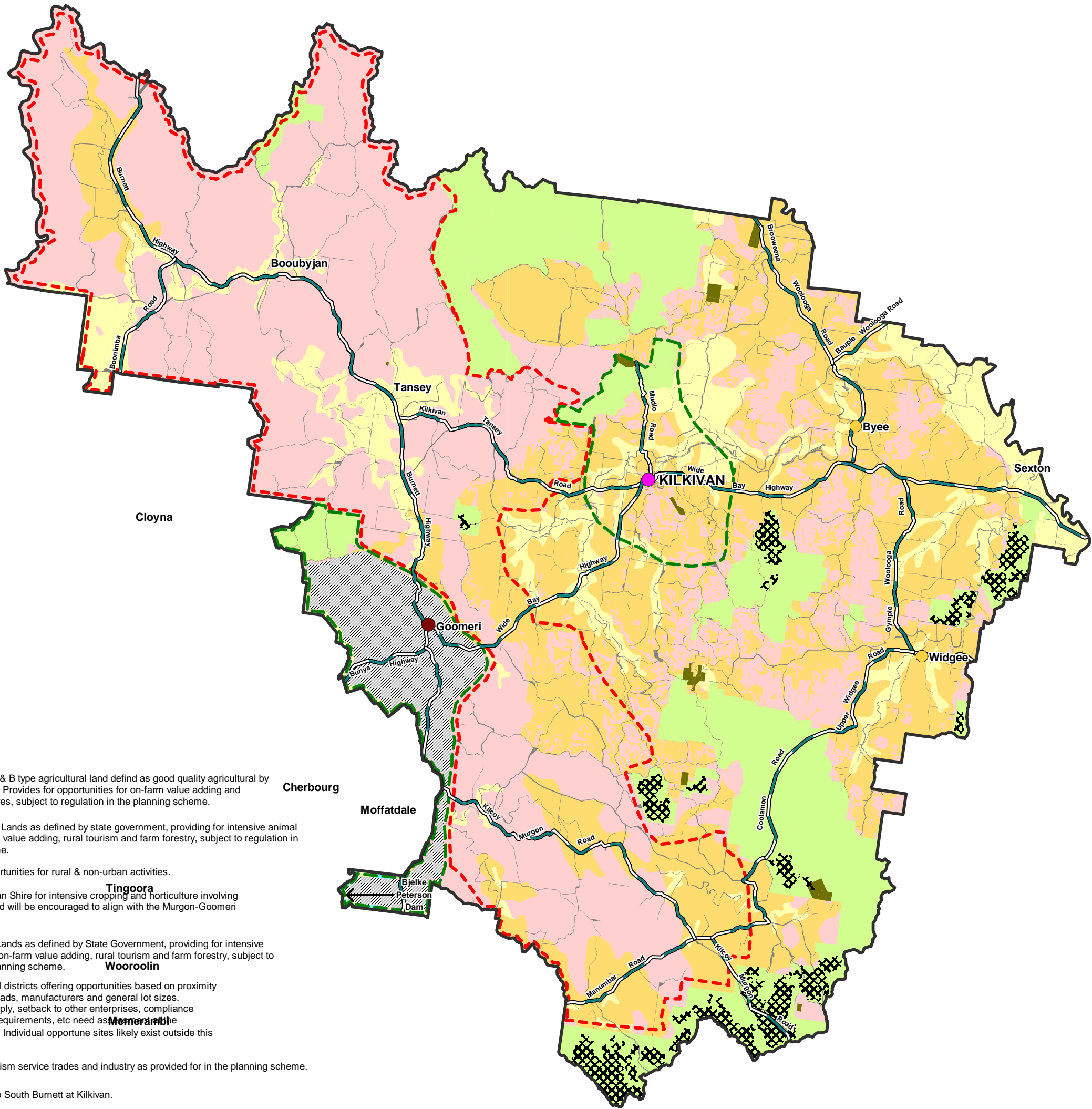


Copyright: This document is and shall remain the property of Gutteridge Haskins & Davey Pty Ltd. The document may only be used for the purpose for which it was commissioned and in accordance with the terms of engagement for the commission. Unauthorised use of this document in any way is prohibited. ©

Source Information: DCDB, GQAL, Tenure & Mining Tenure and Quarry Resources - DNR&M, 2003.
Projection: AGD 84, Zone 56
Date: Gazette Date 06 January 2006



MANAGEMENT
ENGINEERING
ENVIRONMENT



Footnotes

- (1a) Combines Class A & B type agricultural land defined as good quality agricultural by State Government. Provides for opportunities for on-farm value adding and rural tourism ventures, subject to regulation in the planning scheme.
- (1b) Class C1 - Pasture Lands as defined by state government, providing for intensive animal husbandry, on-farm value adding, rural tourism and farm forestry, subject to regulation in the planning scheme.
- (2) Areas provide opportunities for rural & non-urban activities.
- (3) Pressures in Kilkivan Shire for intensive cropping and horticulture involving reconfiguring of land will be encouraged to align with the Murgon-Goomeri arable district.
- (4) Class C - Pasture Lands as defined by State Government, providing for intensive animal husbandry, on-farm value adding, rural tourism and farm forestry, subject to regulation in the planning scheme.
- (5) Represents general districts offering opportunities based on proximity to feed, markets, roads, manufacturers and general lot sizes. Issues of water supply, setback to other enterprises, compliance with development requirements, etc need assessment at the time of application. Individual opportune sites likely exist outside this indicative pattern.
- (6) Includes rural / tourism service trades and industry as provided for in the planning scheme.
- (7) Tourism gateway to South Burnett at Kilkivan.