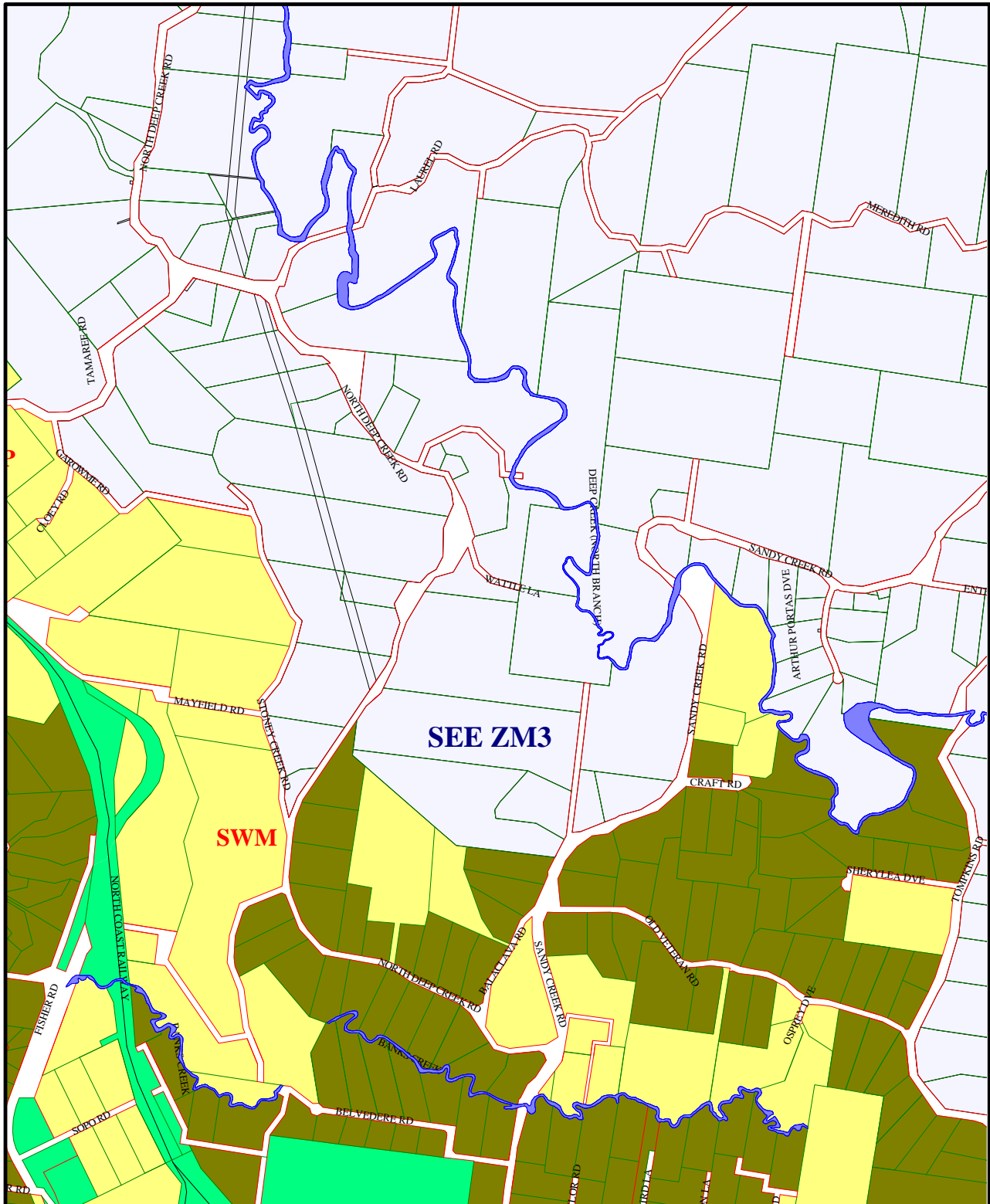







Adjoins Sheet 2



Adjoins Sheet 7

Zones

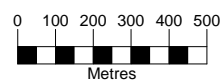
-  Rural
-  Community
-  Rural Residential

Endorsed 23/03/2004

Note - the following uses occur on premises indicated on the zoning map -

SWM Sawmill

GYMPIE PLANNING AREA ZONING MAP ZM1 Sheet 3



1:20000



Cadastral Disclaimer:

While every care is taken to ensure the accuracy of this data, Cooloola Shire Council and the Department of Natural Resources and Mines make no representations or warranties about its accuracy, reliability, completeness or suitability for any particular purpose and disclaims all responsibility and all liability (including without limitation liability in negligence) for all expenses, losses, damage (including indirect or consequential damage) and costs which might incur as a result of the data being inaccurate or incomplete in any way and for any reason. Datum is in accordance with GDA94 Zone 56.