



GYMPIE REGIONAL COUNCIL

AGENDA

of the

SPECIAL MEETING

CHAIRMAN: Cr GC Hartwig (Mayor)

Held in the Boardroom

Town Hall

2 Caledonian Hill

Gympie Qld 4570

On Tuesday, 2 May 2023

At 9.30 am



The Corporate Plan 2022-2027 provides a clear framework and direction in relation to Council's **vision, mission, values** and **key response areas**.

Gympie Regional Council has a vision for embracing opportunities, promoting wellbeing and celebrating strong communities.

Our mission is to leave a positive legacy for future generations by embracing progress through good planning and efficient service delivery.

Our values are:

Accountability

We are open, transparent and take responsibility for our actions.

Communication

We consult with the community, actively listen to and respond to the input of residents, and keep people informed.

Customer Service Focused

We meet the needs of our community in an efficient and effective manner. We strive to continually improve, show empathy and are environmentally aware in our service delivery.

Integrity

We act with honesty and respect in all we do and respect all residents, colleagues and visitors.

Teamwork and Collaboration

We recognise and support everyone's contributions. We are inclusive and contribute respectfully working as a team. We will care for ourselves and others.

Council's activities are aimed at achieving our vision and are focused into the following three key response areas/objectives:

COMMUNITY AND ENVIRONMENT

Our communities have infrastructure and spaces for living, working, learning, sport and recreation that supports and caters for growth and enables the community to be inclusive, connected and safe. Natural ecosystems are conserved and enhanced and our built environment embraces biodiversity, sustainability and heritage.

INFRASTRUCTURE AND ECONOMIC OPPORTUNITY

Our planning and infrastructure seeks to meet foreseeable future needs to support economic development, community enhancement and residents' wellbeing.

ORGANISATION

Gympie Regional Council is an organisation that understands the community, and delivers services efficiently and effectively through highly engaged staff.

The above framework informs council's decision making and guides our organisational management and operational activities.

Gympie Regional Council SPECIAL

Mayor GC Hartwig (Chairman),

*Crs J Milne, NG Jensen, SA Waldock, BM Devereaux, DH Stewart, HT Smerdon,
WA Polley and RA Fredman.*

CONTENTS:

SECTION 1: APOLOGIES / LEAVE OF ABSENCE	4
SECTION 2: DISCLOSURE OF INTERESTS	4
SECTION 3: CORPORATE SERVICES.....	5
3.1 PROCUREMENT REPORT	5
3.2 GOLD AND DISTRICT HISTORICAL SOCIETY INC - DONATION	10
SECTION 4: ATTACHMENTS.....	12
3.1 PROCUREMENT REPORT	
ATTACHMENT 1 RFT2022-23-021 REPA PACKAGE 2 EVALUATION REPORT	13

SECTION 1: APOLOGIES / LEAVE OF ABSENCE

SECTION 2: DISCLOSURE OF INTERESTS

SECTION 3: CORPORATE SERVICES

3.1 Procurement Report

PORTFOLIO: IT and Finance

DIRECTORATE: Corporate Services

DOC ID:

LINKS TO CORPORATE/OPERATIONAL PLAN

KEY RESPONSE AREAS:

Choose a theme.

3. Organisation

1. BACKGROUND AND PREVIOUS COUNCIL CONSIDERATION

In April 2021, Council endorsed the formation of a Procurement Panel to oversee council's procurement activities.

This report provides a summary of the Panel's activities including items endorsed by the Panel for procurement, but which exceed the financial delegation of the Chief Executive Officer (CEO).

2. REPORT

2.1 Procurement Panel Meeting 28 April 2023 (Flying Minute)

The Procurement Panel considered a flying minute in relation to consideration of the recommendation from the Evaluation Panel for Contract No. RFT2022-23-021, 2022 DRFA Events Construction Package 02. The Procurement Panel recommend to Council that Council delegate to the CEO approval to finalise Contract RFT2022-23-021 2022 DRFA Events Construction Package 02 with Durack Civil Pty Ltd for \$35,434,410.77 (exclusive of GST) subject to confirmation of funding from Queensland Reconstruction Authority (QRA) – Approved.

RFT2022-23-021 2022 DRFA Events Construction Package 02

A Request for Tender was issued to Suppliers on RFP0522 to establish a AS2124 Schedule of Rates contract to deliver flood restoration works.

Final approval of funding by QRA is being expedited, with technical reviews being undertaken by QRA collaboratively with Council. A date for final approval by QRA of this REPA submission is unknown.

Three (3) responses were received, however through the initial tender compliance check one (1) respondent withdrew their submission. The remaining two (2) tenders had outstanding compliance issues, however evaluation proceeded on the condition that further post-tender clarifications were sought providing removal of non-compliance related qualifications from the tenderers.

The Tenders in Contention are outlined below.

Name of Respondent	Submitted Tender Amount
Durack Civil Pty Ltd	\$35,434,410.77
SGQ Pty Ltd	\$36,552,653.00
<i>All amounts are exclusive of GST</i>	

Through the Price Evaluation process, it was established that the Tenders received were significantly higher than the pre-tender estimate, which was based on historical prices prior to the market becoming over-heated (where demand for services exceeds supply, inflating market prices). It was generally agreed that the prices received were reflective of the currently inflated market.

Noting that (a) the Tenders in Contention had outstanding compliance issues; and (b) the Tender prices submitted are unreasonably high, the Evaluation Panel developed the following options for consideration prior to acceptance of any Tender submitted under RFT2022-23-021.

Option
1. Do not accept any of the Tenders. Modify re-approach to market to include additional works.
2. Enter post-tender negotiations with preferred Respondent prior to accepting Tender.
3. Accept the Tender from the preferred Respondent.

The Tenders in Contention were evaluated against the evaluation criteria should Options 2 or 3 be preferred, resulting in the following scores.

Name of Respondent	Price Score	Non-Price Score	Total Score
Durack Civil Pty Ltd	10.00	5.66	15.66
SGQ Pty Ltd	9.69	4.67	14.36

It was the Evaluation Panel's opinion that Durack Civil Pty Ltd was the preferred Respondent given that they were previously appointed to Prequalified Supplier Arrangement RFP0522 DRFA Construction Services - Major Works and in recognition of Council's assessment of their suitability, capability and experience in delivering this kind of work. Durack Civil Pty Ltd also submitted the lowest price.

Noting the above, the Evaluation Panel's recommendation was that Council proceed with Option 1 above and do not accept any Tender under RFT2022-23-021. If this recommendation was unacceptable the Evaluation Panel's second recommendation was to adopt Option 3 and accept the Tender received from Durack Civil Pty Ltd for \$35,434,410.77 (exclusive of GST), noting a process to further clarify and ultimately remove the stipulated conditions of their Tender as required.

The Procurement Panel considered the Evaluation Panel's Report and decided to proceed with Option 3 and recommend to Council that Council delegate to the CEO approval to finalise Contract No. RFT2022-23-021, 2022 DRFA Events Construction Package 02 with

Durack Civil Pty Ltd for \$35,434,410.77 (exclusive of GST) subject to confirmation of funding from Queensland Reconstruction Authority (QRA).

The Panel considered this option to be the most optimal as:

- going back to market would significantly delay necessary reconstruction works for the benefit of the community and put at risk Council's ability in meeting its strict reconstruction time limits with QRA.
- current pricing being submitted for tenders across Queensland are indicative of an over heated market, with QRA recognising and accepting this as fact, with all indications being that going back to market would not result in a lower price.
- both tender responses were within \$1 million indicating that this is the current market price.

Due to the significantly higher Tender value compared to estimates and the fact that QRA are yet to approve the REPA submission for funding, the Procurement Panel also consider it prudent that QRA be approached to confirm that the increased value will be funded as part of their approval process.

2.3 Contract extension RFT 2016-2017-T012 – Provision of Gatekeeping and Recycling Services – for approval

This is an item that was "put on the table" at Council's 26 April 2023 Ordinary Meeting and is now bought back for Council consideration.

At the Council's March 2017 Ordinary Meeting Council approved the awarding of Contract RFT 2016-2017-T012 – Provision of Gatekeeping and Recycling Services at Waste Management Facilities to Endeavour Foundation. The contract was awarded for a period of five (5) years with an option of consecutive renewed terms of one (1) year and one (1) year. The five-year term commenced on 1 June 2017 and expired on 31 May 2022 subject to optional extensions.

The Council resolution was "That the tender of Endeavour Foundation for \$95,883.05 (GST inclusive) per month be accepted and a 5 year contract entered into." Due to the uncertainty on whether the above resolution also included the two 1-year extensions, it is prudent to seek Council resolution for enacting the final 1-year extension with Endeavour Foundation. Council is engaged with Endeavour to update the terms of the existing contract to make contract management more effective. The contract extension has not yet been priced by Endeavour, but it is expected that it will be around the existing \$95,000.00 per month with a potential contingency of 20%.

Council officers have noted a number of performance issues with Endeavour and have recently facilitated regular contract performance meetings that have resulted in improved performance. If the contract is extended, Council officers will use the next year to determine if there is a business case to bring these services in-house prior to going back to the market with an improved tender contract that will address performance issues with the current incumbent.

The Procurement Panel has endorsed the council officers' recommendation for Council to resolve to approve the final contract extension of Contract RFT 2016-2017-T012 – Provision

of Gatekeeping and Recycling Services at Waste Management Facilities to Endeavour Foundation for a period of 1 year commencing 1 June 2023 and expiring 31 May 2024.

3. BUDGET IMPLICATIONS

Items considered by the Procurement Panel are consistent with the 2022-23 Budget and the Long-Term Financial Forecast 2022-23 to 2031-32 adopted by Council on 14 July 2022.

However, it should be noted that RFT2022-23-021 contract award is subject to confirmation of QRA funding.

4. POLICY IMPLICATIONS

All procurement processes, reports and recommendations are consistent with Council's Procurement Policy, adopted 14 July 2022.

5. CONSULTATION

Consultation has been undertaken across the key stakeholders within Council, in relation to the items considered by the Procurement Panel during the period covered by this report.

6. CONCLUSION

The Procurement Panel has considered the Evaluation Report for RFT2022-23-021 2022 DRFA Events Construction Package 02 and recommend to Council that Council delegates to the CEO approval to finalise RFT2022-23-021 2022 DRFA Events Construction Package 02 to Durack Civil Pty Ltd for \$35,434,410.77 (exclusive of GST) subject to confirmation of funding from Queensland Reconstruction Authority (QRA).

The Procurement Panel also endorse the council officers' recommendation for Council to resolve to approve the final contract extension of Contract RFT 2016-2017-T012 – Provision of Gatekeeping and Recycling Services at Waste Management Facilities to Endeavour Foundation for a period of 1 year commencing 1 June 2023 and expiring 31 May 2024.

ATTACHMENTS

- [1.](#) RFT2022-23-021 REPA Package 2 Evaluation Report

RECOMMENDATION 1

That Council delegate to the Chief Executive Officer approval to

- a. award Contract No. RFT2022-23-021 2022 DRFA Events Construction Package 02 to Durack Civil Pty Ltd for \$35,434,410.77 (exclusive of GST); and**
- b. to execute all matters associated with delivering the scope as defined within the Terms of the Contract subject to confirmation of funding from Queensland Reconstruction Authority.**

RECOMMENDATION 2

That Council resolve to approve the final contract extension of Contract RFT 2016-2017 T012 – Provision of Gatekeeping and Recycling Services at Waste Management Facilities

to Endeavour Foundation for a period of 1 year commencing 1 June 2023 and expiring 31 May 2024.

3.2 Gold and District Historical Society Inc - Donation**PORTFOLIO:** IT and Finance**DIRECTORATE:** Corporate Services**DOC ID:****LINKS TO CORPORATE/OPERATIONAL PLAN****KEY RESPONSE AREAS:**1. Community and Environment

1. BACKGROUND AND PREVIOUS COUNCIL CONSIDERATION

The Gympie and District Historical Society Inc trading as the Gympie and District Historical and Gold Mining Museum Inc (the Museum) is a volunteer-based organisation that is home to a vast collection of documents, artifacts and photographs dating from the discovery of Gold in 1867 by James Nash. The Museum was registered as a charity on 3 December 2012.

2. REPORT

Since 2018, the Museum has received an annual contribution of \$10k (exclusive of GST) from the Gympie Regional Council (Council) to support its operations. In the 2022-23 financial year to date, the Museum also received an additional \$5.8k (inclusive of GST) from Council to reimburse the Museum for roof repairs.

In February 2022, the Museum was severely impacted by flooding with damage sustained to several of its buildings and artifacts. Damage to the Museum's buildings will be funded by Council through an insurance payout from the 2022 flooding events.

However, the restoration of the Museum's artifacts from flood damage remains on ongoing issue for the Museum, and with an aging volunteer base the Museum is struggling to reactivate its displays.

Noting the above, Council has been asked to consider a request from the Museum for an additional one-off contribution of \$20k (exclusive of GST) to facilitate the restoration of Museum artifacts.

3. BUDGET IMPLICATIONS

If the recommendation of this report is adopted by Council, additional expenditure of \$20k will be incurred by Council against the Property and Open Space budget. This additional expenditure will then be incorporated into the next formal review of Council's 2022-23 Budget.

4. POLICY IMPLICATIONS

There are no policy implications associated with the recommendation of this report.

5. CONSULTATION

Consultation has occurred with:

- the Mayor
- the Director Infrastructure Services
- the Property and Services Team.

6. CONCLUSION

The Gympie and District Historical Society Inc trading as the Gympie and District Historical and Gold Mining Museum Inc was heavily impacted by the 2022 flooding events and while damage to its buildings will be funded by Council, the restoration of its artifacts by its predominately volunteer base is proving problematic. As such, it is considered appropriate that Council donate an additional \$20k (excl of GST) to fund artifact restoration works.

RECOMMENDATION

That Council donate \$20k (exclusive of GST) to the Gympie and District Historical Society Inc trading as the Gympie and District Historical and Gold Mining Museum Inc to partially fund the restoration of flood damaged artifacts.

SECTION 4: ATTACHMENTS

3.1 Procurement Report

ATTACHMENT 1	RFT2022-23-021 REPA PACKAGE 2 EVALUATION REPORT	13
--------------	---	----

TENDER ANALYSIS AND RECOMMENDATION

2022 DRFA Events Construction Package 02

CONTRACT NO. RFT2022-23-021

EXECUTIVE SUMMARY

A Request for Tender was issued to Suppliers on RFP0522 to establish an AS2124 Schedule of Rates contract to deliver flood restoration works included in Eastern Roads REPA Package 01.

Eastern Roads REPA Package 01 is still not approved by QRA and is the subject of a Technical Review between Council and QRA due to the exclusion of a third of the submitted restoration works. A date for final approval by QRA of this REPA submission is unknown.

Three (3) responses were received, however through the initial Tender compliance check one (1) respondent withdrew their submission. The remaining two (2) Tenders had outstanding compliance issues, however evaluation proceeded on the condition that further post-tender negotiations were undertaken prior to award of the Contract.

The Tenders in Contention were:

Name of Respondent	Submitted Tender Amount
Durack Civil Pty Ltd	\$35,434,410.77
SGQ Pty Ltd	\$36,552,653.00
All amounts are exclusive of GST	

Through the Price Evaluation process, it was established that the Tenders received were significantly higher than Council's tender comparison estimate of \$14.5M and attributed this to the presence of an over-heated market (where demand for services exceeds supply, inflating market prices). It was generally agreed that the prices received were reflective of the currently inflated market.

Noting that (a) the Tenders in Contention have outstanding compliance issues; and (b) the Tender prices submitted are unreasonably high, the Panel has provided the following options for consideration prior to acceptance of any Tender submitted under RFT2022-23-021.

Option	Benefits	Risks
1. Do not accept any of the Tenders. Modify re-approach to market to include additional works.	<ul style="list-style-type: none"> Single Contractor engaged for all REPA works on eastern road network. Likely to receive more reasonable pricing for larger package of work. Likely increase in scope of Council funded complimentary works (assuming more reasonable pricing is received as noted above). Cost of works is 100% reimbursable through the DRFA. 	<ul style="list-style-type: none"> Dissatisfaction from unsuccessful Respondent's. Possibility for unreasonable pricing to be submitted for larger tender package. Delay to commencement of flood recovery works under Eastern Roads REPA Package 01. Risk QRA do not accept extension of time request to June 2025 for Eastern Roads REPA Package 01.
2. Enter post-tender negotiations with preferred Respondent prior to accepting Tender.	<ul style="list-style-type: none"> Flood restoration works under Eastern Roads REPA Package 01 commence immediately upon QRA approval of submission (noting minor 	<ul style="list-style-type: none"> Likely to remain unreasonably high price. Eastern Roads REPA Package 01 still not approved by QRA.

	<p>delay for post-tender negotiations).</p> <ul style="list-style-type: none"> • Possible price reduction if suitable risk sharing approach adopted by Council. • Cost of works is 100% reimbursable through the DRFA. 	<ul style="list-style-type: none"> • Respondent likely to increase submitted price to account for change to their conditions of tender. • Reduced scope for Council funded complimentary works. • Sets new benchmark for future flood recovery contracts.
3. Accept the Tender from the preferred Respondent.	<ul style="list-style-type: none"> • Flood restoration works to commence immediately upon QRA approval of submission. • Cost of works is 100% reimbursable through the DRFA. 	<ul style="list-style-type: none"> • Unreasonably high price. • Eastern Roads REPA Package 01 still not approved by QRA. • Likely variations will be submitted through delivery of the Contract due to conditions of Respondent's Tender. • Reduced scope for Council funded complimentary works. • Sets new benchmark for future flood recovery works.

The Tenders in Contention were evaluated against the evaluation criteria should Options 2 or 3 be preferred, resulting in the following scores:

Name of Respondent	Price Score	Non-Price Score	Total Score
Durack Civil Pty Ltd	10.00	5.66	15.66
SGQ Pty Ltd	9.69	4.67	14.36

It is the Panel's opinion that Durack Civil Pty Ltd is the preferred Respondent given:

- They were previously appointed to *Prequalified Supplier Arrangement RFP0522 DRFA Construction Services - Major Works* in recognition of Council's assessment of their suitability, capability and experience in delivering this kind of work; and
- They submitted the lowest price.

It is the Panel's recommendation that Council proceed with Option 1 above and do not accept any Tender under RFT2022-23-021. Should this be an unacceptable outcome, the Panel's second recommendation is to accept the Tender received from **Durack Civil Pty Ltd** for **\$35,434,410.77 (exclusive of GST)**, noting a process to further clarify and ultimately remove the stipulated conditions of their Tender is required.

CONTENTS

1	Background and Previous Council Consideration.....	5
1.1	DRFA Event Activations.....	5
1.2	Register of Prequalified Suppliers Arrangement RFP0522 for DRFA Construction Services - Major Works	5
2	Report.....	5
2.1	Tender Overview.....	5
2.1.1	Tender Comparison Estimate.....	6
2.2	Tender List at Close.....	7
2.3	Evaluation Panel.....	7
2.4	Tender Conformance	7
2.4.1	Conditions and Assumptions	7
2.4.2	Content of Tenders	8
2.4.3	Tender Discrepancies	8
2.4.4	Post Tender Close Clarifications	10
2.5	Tenders in Contention.....	10
2.6	Price Evaluation.....	10
2.6.1	Unusually Low Bid	10
2.6.2	Sensitivity Analysis	11
2.6.3	Price Benchmark Analysis	11
2.7	Evaluation Criteria	12
2.8	Evaluation of Tenders.....	12
2.9	Budget Implications.....	13
2.10	Summary and Recommendation	13

APPENDICES

Appendix A.	Post-Tender Close Clarifications	15
Appendix B.	Evaluation Table	16



1 Background and Previous Council Consideration

1.1 DRFA Event Activations

The Gympie Region experienced intense rainfall events in January, February and May 2022 which led to extensive flooding resulting in damage to essential public assets. In response to this damage to essential public assets, Council has successfully sought activation under Disaster Recovery Funding Arrangements (DRFA) for the following events:

- Ex-Tropical Cyclone Seth, 29 December 2021 - 10 January 2022
- South East Queensland Rainfall and Flooding, 22 February - 5 April 2022
- Southern Queensland Flooding, 6 - 20 May 2022

1.2 Register of Prequalified Suppliers Arrangement RFP0522 for DRFA Construction Services - Major Works

Through a Request for Proposal (RFP) process, Council established the *Prequalified Supplier Arrangement RFP0522 DRFA Construction Services - Major Works* at the November Ordinary meeting (refer M08/11/22). This panel arrangement consists of suitably qualified and experienced Civil Construction Contractors to supplement the delivery of DRFA funded flood recovery works.

2 Report

2.1 Tender Overview

A Request for Tender (RFT) was issued on Thursday 23rd February 2023 via VendorPanel to Suppliers on RFP0522 to establish an AS2124 Schedule of Rates contract. The scope of works to be delivered through this RFT was based on Eastern Roads REPA Package 01. The schedule of rates developed for tendering included a separate schedule to account for an expected 50% increase in scope due to the nature of the flood damage on Council's road network.

2.1.1 REPA Submissions

Eastern Roads REPA Package 01 was lodged for assessment with QRA on 22 December 2023 for a value of \$9.8M. The REPA submission is still awaiting formal approval from QRA, however is the subject of a Technical Review between Council and QRA due to the exclusion of \$3.0M worth of restoration works. A date for final approval by QRA of this REPA submission is unknown.

The Council roads in Eastern Roads REPA Package 01 include:

- | | | |
|----------------------|-----------------------|-------------------------|
| • Amamoor Creek Road | • Hart Road | • Pacific Boulevard |
| • Amamoor Dagon Road | • Harvey Siding Road | • Penny Road |
| • Anderleigh Road | • Henry Street | • Perseverance Street |
| • Ascot Road | • Hilton Road | • Pine Street |
| • Banks Pocket Road | • Hoopers Road | • Power Road |
| • Bayside Road | • Ian Drive | • Pritchard Road |
| • Bella Creek Road | • Imbil Brooloo Road | • Pronger Parade |
| • Blackgate Road | • Inskip Avenue | • Purcell Road |
| • Bolcaro Road | • Inskip Point Road | • Queen Elizabeth Drive |
| • Bradys Road | • Investigator Avenue | • Rafter Road |
| • Burgess Road | • Jaycee Way | • Rainbow Beach Road |

- Calico Creek Road
- Calton Hill
- Carlo Road
- Cartwright Road
- Centro Way
- Clarkson Drive
- Cliff Jones Road
- Coles Creek Road
- Copp Road
- Corella Road
- Counter Road
- Crescent Road
- Dagon Road
- Dan Meurant Drive
- David Drive
- Dawn Road
- Dennis Little Drive/Rafter Road Link
- Dennis Little Drive
- Dobson Road
- Drummond Drive
- Duke Street
- Eel Creek Road
- Fisher Road
- Flood Road
- Fraser Road
- Fritz Road
- Glastonbury Creek Road
- Graham Street
- Greendale Road
- Groundwater Road
- Hall Road
- Jimbour Road
- John Street
- Kandanga Amamoor Road
- Kandanga Creek Road
- Kandanga Imbil Road
- Kanyan Road
- Karoonda Road
- Keefton Road
- Lawrence Street
- Little Bella Creek Road
- Lockhart Road
- Mary Street
- McIntosh Creek Road
- Meddleton Road
- Melawondi Road
- Monkland Street
- Mooloo Road
- Mount Pleasant Road
- Moy Pocket Road
- Nash Road
- Nash Street
- Neerdie Road
- Neusavale Road
- Noosa Road
- North Deep Creek Road
- O'Connell Street
- Oak Street
- Old Goomboorian Road
- Old Gympie Road
- Old Maryborough Road
- Ormes Road
- Rammutt Road
- Ramsey Road
- Randwick Road
- Red Hill Road
- Reef Street
- Regan Road
- River Road
- Rocks Road
- Saleyard Road
- Sandy Creek Road
- Scotchy Pocket Road
- Scrub Road
- Shadbolt Road
- Shields Street
- Smerdon Road
- Sorensen Road
- Tagigan Road
- Tamaree Road
- Tandur Road
- Tandur Traveston Road
- Theebine Road
- Thomas Road
- Tozer Street
- Traveston Crossing Road
- Traveston Road
- Tyrrell Road
- Watson Road
- Wilsons Pocket Road
- Yabba Creek Road
- Young Street

2.1.2 Tender Comparison Estimate

A Tender comparison estimate was developed for this RFT and is summarised below:

Tender Schedule	Estimate
Separable Portion 1 – Contract Items	\$9,340,373.81
Separable Portion 1 - Revised Rates for Quantities Outside the LOA	\$4,689,330.16
Separable Portion 2 - Contract Items	\$436,500.00
Total	\$14,466,203.97

2.2 Tender List at Close

The following Tenders were received on Friday 10th May 2023.

Name of Respondent	Submitted Tender Amount
Civlec Pty Ltd	\$23,671,207.18
Durack Civil Pty Ltd	\$35,434,410.77
SGQ Pty Ltd	\$36,552,653.00
All amounts are exclusive of GST	

2.3 Evaluation Panel

The Evaluation Panel convened to assess the Tenders on Monday 27th March 2023. The Panel included the following members:

Position	Person	Organisation / Role
Panel Chairman	Mr Liam Watson	Manager Capital Delivery and Assets
Panel Member	Mr Robert McCarthy	CRC / 2022 DRFA Events Program Manager
Panel Member	My Stuart Reeves	CRC / 2022 DRFA Events Construction Manager

2.4 Tender Conformance

The submitted Tenders were examined for conformance in accordance with Council's Tender Process Terms and as summarised below:

Tender Conformance Criteria	Civlec PL	Durack Civil PL	SGQ PL
Tender is lodged via the Tender Box and on or before the Closing Date	TENDER WITHDRAWN	✓	✓
Tender is submitted by a single Respondent		✓	✓
Tender is free of any condition or qualification		x**	x**
Tender Response Form is fully completed, properly executed, and free of discrepancies		✓*	x**
Respondent accepts the Terms and Conditions of Contract		✓	✓

* denotes that conformance was reached following a post-tender close clarification.

** denotes further clarifications should be undertaken prior to Contract award.

2.4.1 Conditions and Assumptions

The Tenders were examined for Conditions and/or Assumptions that may impact the submitted Quote amounts:

- Durack Civil PL
 - Any relocation/diversion/Lifting of existing underground/overhead services/loops to be completed by others.
 - Due to unprecedented volatile nature of the civil construction industry, there has been no allowance for cost escalation on supplied materials (inc. fuel) or subcontracted components of the work – to be negotiated post tender.
 - Price and final quantities subject to verification of design and existing levels.

- There has been no allowance for delays associated with client proof rolls for patch repair works – we have assumed subbase and base will be placed immediately due to traffic staging requirements to have patches filled and closed up each night.
- There has been no allowance for start date/program subject to crew and material availability at time of award.
- Material will be available from hytec quarry during the works – they have advised that there is a small risk they may not be able to supply and will know more closer to start date.
- Same day 2 coat seal i.e., both coats installed same day – no allowance for prime.
- Use of small posi profiler head for stab patches with a width of less than 2 m and hand spreading of cement to precalculated tip rates.
- SGQ PL
 - We have based our offer on materials, plant and labour being available to complete the works in accordance with our tender program. Accordingly, we require that the contract provides for time (program) and cost relief to SGQ in the event that there is a shortage or unavailability of these resources in the relevant region, to the extent beyond SGQ's control.
 - We require that the contract provides relief and an entitlement for SGQ to claim reimbursement where the cost of subcontractors or suppliers increases between the time of tender and (i) when that package of works is awarded by SGQ (where it is possible to secure fixed pricing) or (ii) at the time of incurring the subcontractor or supplier cost (where it is not possible to secure fixed pricing), This applies to all materials, plant, labour and services and other subcontract costs.
 - We have allowed to spoil all required material a maximum of 2km from each work face.
 - SGQ will endeavour to install the treatments at the widths nominated in the design. In scenarios where an increased width is required to be installed due to available equipment, the actual quantity completed on site shall be claimable by SGQ.
 - We have allowed to supply the material required for work item '92007 Plant-Mixed Lightly Bound Base. Excludes Seal' in accordance with MRTS08, not MRTS10. We require the working times to be relaxed to enable placement of this material at the required locations. This work item can only be ordered by GRC for locations less than 80km from Boral's Moy Pocket quarry.
 - We require an extension of time with costs to be claimable for any increase in scope or Principal caused delay.

2.4.2 Content of Tenders

The content of the submitted Tenders were examined for their completeness:

- Civlec PL
 - Failed to submit a resume for a nominated Key Personnel.
 - Failed to provide sufficient information for Proposed Subcontractors, Proposed Plant and Equipment, and Daywork Schedules.
 - Failed to properly execute the Respondent Declaration.

2.4.3 Tender Discrepancies

The Tenders were examined for discrepancies relating to their proposed methodology and schedule of rates.

- Civlec PL
 - Gantt Chart provided shows delivery of works on roads in an alphabetical order.
 - Gantt Chart provided shows detailed design works occurring after roads nominated for detailed design have been constructed.
 - Cash Flow provided shows a fixed monthly expenditure over the entirety of the construction program, including no apparent allowance for a Christmas period shutdown.
 - Items submitted with a tendered amount >50% lower than the median tendered amount:

Work Item ID	Work Item Description
20017.01	Planning of temporary traffic management (TMP)
20101.01	Contractor's site facilities
90513.01	Replace sign (complete) - standard road sign, includes post
91010.01	Crack Repair
92001.01	Reconstruct unbound granular base. Excludes seal
92002.01	Reconstruct unbound granular pavement. Excludes seal
92003.01	Patch repair - patch local unbound pavement failure (<20m2). Includes 2 coat bitumen seal
92521.01	Repair with flowable concrete
92526.01	Construct rock mattress
12620.01	Geotechnical investigation analysis and reporting (non-pavement)
12660.01	Potholing Investigation
12690.01	Engineering Survey (incl As-Con)
12940.01	Detailed engineering drawings

- Durack Civil PL
 - Gantt Chart provided shows delivery of works on a work activity basis rather than on a road-by-road basis.
 - Cash Flow provided shows a fixed monthly expenditure over the entirety of the construction program, including no apparent allowance for a Christmas period shutdown.
 - Items submitted with a tendered amount >50% lower than the median tendered amount:

Work Item ID	Work Item Description
20203.01	Implement Environmental Management Plan (Construction)
91002.01	Medium formation grading
91004.01	Reshape table drain (1 side)
92501.01	Heavy formation grading incorporating 50mm of imported material

- Items submitted without a tendered amount:

Work Item ID	Work Item Description
20019.01	Implementation, maintenance, and removal of temporary traffic management

- SGQ PL
 - Supplied list of Plant and Equipment is unclear as to which plant is owned by SGQ and which plant will be hired.
 - Gantt Chart provided does not show delivery of works on a road-by-road basis or the number of crews undertaking the works.
 - Cash Flow provided should correlate with the Gantt Chart provided.
 - Items submitted with a tendered amount >50% lower than the median tendered amount:

Work Item ID	Work Item Description
20502.01	Erosion and Sediment Control Devices (Non-Itemised)
90512.01	Repair road signage
91015.01	Reconstruct concrete kerb
91020.01	Repair drainage structure - excavate, repair and reinstate
91031.01	Reinstate line marking
92006.01	Bitumen spray seal, 2-coat



12330.01 Pavement Design (RPEQ certified)

2.4.4 Post-Tender Close Clarifications

Post-tender close notices were issued to each respondent to address the items identified in Sections 2.4.1 to 2.4.3. The responses have been included in Appendix A and are summarised below:

- Civlec PL
 - Submission withdrawn, citing inability to resource this contract since submission was made.
- Durack Civil PL
 - Conditions and Assumptions
 - Explanations provided on how the included conditions and assumptions will be applied by Durack Civil through delivery of the Contract.
 - Significant risk remains that submitted Tender Price will increase through delivery of the Contract.
 - Recommend further clarifications take place to minimise above risk prior to awarding Contract.
 - Tender Discrepancies
 - Satisfactorily clarified Gantt Chart and cash flow queries.
 - Acknowledged the submitted rates as correct.
- SGQ PL
 - Conditions and Assumptions
 - Explanations provided on how the included conditions and assumptions will be applied by SGQ through delivery of the Contract.
 - Significant risk remains that submitted Tender Price will increase through delivery of the Contract.
 - Recommend further clarifications take place to minimise above risk prior to awarding Contract.
 - Tender Discrepancies
 - Unsatisfactorily clarified Gantt Chart and cash flow queries, however can be further clarified as part of process to resolve the Conditions and Assumptions.
 - Acknowledged the submitted rates as correct.

2.5 Tenders in Contention

Based on the above Tender Conformance check, the Tenders in Contention (subject to further clarification of outstanding conditions) for further assessment were:

Name of Respondent	Submitted Tender Amount
Durack Civil PL	\$35,434,410.77
SGQ PL	\$36,552,653.00
<i>All amounts are exclusive of GST</i>	

2.6 Price Evaluation

2.6.1 Unusually Low Bid

The Request for Tender Process Terms do not contain any clauses in relation to assessment for "unusually low bids".

The Department of Transport and Main Roads Transport Infrastructure Project Delivery System defines an Unusually Low Bid (ULB) as where a corrected submitted price is 15% or more below the median price of the conforming submissions received for a Tender. Further, it states "Caution is advised in using the 'Unusually Low

Bid' clause when the market is over-heated (demand for services exceeds supply). In an over-heated market, what appears to be a ULB may in fact be a reasonable price from a Tenderer who tenders competitively, but other Tenderers do not."

With regard to this Tender, no submitted tenders were considered to be unusually low bids.

2.6.2 Sensitivity Analysis

A sensitivity analysis of the Tendered Price Schedules is performed to check a Tender for unusually high unit rates on items that may be subject to a quantity change during the construction of the project. The analysis seeks to assess the impact this will have on the overall cost of the project.

Given the structure of the Tender Price Schedules, the total Tender amounts submitted include an allowance for a 50% increase in all Contract Items. Therefore, sensitivity of the Tendered amounts to an increase in quantities has already been addressed.

The Tender Price Schedules included the provision of a rate for instances where the Contract Item ordered failed to reach the minimum limit of accuracy included in the Contract ($\pm 20\%$). Two (2) sensitivity scenarios were analysed:

- Considering only the nine (9) major work items that account for approximately 75% of the works under the Contract; or
- Considering all Contract Items.

Sensitivity Scenario	Durack Civil PL	SGQ PL
Only Major Work Items	\$25,178,576	\$26,460,608
All Contract Items	\$23,169,660	\$21,534,699

The above analysis demonstrates that if the minimum limits of accuracy are **not** met through delivery of this Contract, the Respondent with the lowest submitted tender price will change on a case-by-case basis.

It is considered very likely that the minimum limits of accuracy will be exceeded on this Contract due to:

- the increase in flood damage eligible for DRFA reimbursement present on Council's road network since lodgement of the REPA submission; and
- Council's likelihood of contributing complimentary funding to rehabilitate road segments ineligible for DRFA reimbursement.

Given the above, it is considered highly unlikely that the above sensitivity scenarios will prevail through delivery of this Contract and therefore they will not be considered in the price component of the Tender Assessment.

2.6.3 Price Benchmark Analysis

A price benchmark analysis of the Tendered rates is performed as a check of the submitted Tenders against the tender comparison estimate to establish:

- Value for money; and
- Risk to the project budget.

Both Tenders in Contention were approximately 150% greater than the tender comparison estimate as summarised below:

Tender Schedule	Tender Comparison Estimate	Durack Civil PL	% Change to Estimate	SGQ PL	% Change to Estimate
Separable Portion 1 – Contract Items	\$9,340,374	\$24,089,935	+158%	\$26,399,649	+183%

Separable Portion 1 - Revised Rates for Quantities Outside the LOA	\$4,689,330	\$10,769,273	+130%	\$9,634,279	+105%
Separable Portion 2 - Contract Items	\$436,500	\$575,203	+32%	\$518,725	+19%
Total	\$14,466,204	\$35,434,411	+145%	\$36,552,653	+153%

Regarding value for money, it is generally accepted that the current road and bridge construction market is over-heated (demand for services exceeds supply, inflating market prices), with contributing factors being:

- Large infrastructure delivery projects underway in Southeast Queensland (C2CD, Cross River Rail, etc.).
- Majority of Queensland and northern New South Wales Local Governments entering concurrent REPA programs.
- On-going shortage in resource supply (labour, materials, etc.) stemming from COVID-19.

In an over-heated market, it is difficult to determine if submitted prices are reasonable. In this instance, both Tenders in Contention were competitive with each other whilst both being significantly higher than the tender comparison estimate.

Regarding project budget risk, works under this Contract are being performed on the basis they are eligible works under the DRFA and will be 100% reimbursable to Council. Provided QRA accept the market rates as awarded by Council, the project budget will be reflective of the awarded tender amount. Notwithstanding this, there is also an expectation that Council will fund complimentary works under this contract (i.e. works that are ineligible for DRFA reimbursement). The quantum of complimentary works that can be performed within the complimentary works budget will be approximately 60% lower than what was originally anticipated given the allocation of Council's budget for complimentary works was based on the tender comparison estimate.

With regard to this Tender, it was agreed that the prices received were reflective of the currently inflated market and consideration should be made to **not** accept the submitted Tenders on this basis.

2.7 Evaluation Criteria

In accordance with the Procurement Evaluation and Probity Plan, the evaluation criteria were weighted as follows:

Evaluation Criteria	Weighting
Price	50%
Non-Price Score*	50%

**It is noted that the non-price score of all Suppliers appointed to Prequalified Supplier Arrangement RFP0522 DRFA Construction Services - Major Works was set as part of the initial evaluation. Refer Council's November 2022 Meeting.*

2.8 Evaluation of Tenders

The Tenders in Contention were evaluated under the above evaluation criteria. A copy of the evaluation is contained in Appendix B. The evaluation resulted in the following scores:

Name of Respondent	Price Score	Non-Price Score	Total Score
Durack Civil PL	10.00	5.66	15.66
SGQ PL	9.69	4.67	14.36

It is therefore the Evaluation Panel's opinion that Durack Civil Pty Ltd is the preferred respondent given:

- They were previously appointed to *Prequalified Supplier Arrangement RFP0522 DRFA Construction Services - Major Works* in recognition of Council's assessment of their suitably, capability and experience in delivering this kind of work; and
- They submitted the lowest price.

2.9 Budget Implications

This project qualifies as "eligible expenditure" under the Queensland Disaster Funding Guidelines – June 2021 as costs for temporary employees, agency staff, contractors and/or consultants directly associated with the delivery of eligible works are 100% reimbursable by the DRFA. The current deadline for expenditure under this program in June 2024.

If complimentary works are ordered under this Contract, it will be the Contract Administrator's responsibility to ensure the works ordered do not exceed any available Council allocated budget for complimentary works.

2.10 Recommendation

Noting that **(a)** the Tenders in Contention have outstanding compliance issues; and **(b)** the Tender prices submitted are unreasonably high, the Panel has provided the following options for consideration prior to acceptance of any Tender submitted under RFT2022-23-021.

Option	Benefits	Risks
1. Do not accept any of the Tenders. Modify re-approach to market to include additional works.	<ul style="list-style-type: none"> • Single Contractor engaged for all REPA works on eastern road network. • Likely to receive more reasonable pricing for larger package of work. • Likely increase in scope of Council funded complimentary works (assuming more reasonable pricing is received as noted above). • Cost of works is 100% reimbursable through the DRFA. 	<ul style="list-style-type: none"> • Dissatisfaction from unsuccessful Respondent's. • Possibility for unreasonable pricing to be submitted for larger tender package. • Delay to commencement of flood recovery works under Eastern Roads REPA Package 01. • Risk QRA do not accept extension of time request to June 2025 for Eastern Roads REPA Package 01.
2. Enter post-tender negotiations with preferred Respondent prior to accepting Tender.	<ul style="list-style-type: none"> • Flood restoration works under Eastern Roads REPA Package 01 commence immediately upon QRA approval of submission (noting minor delay for post-tender negotiations). • Possible price reduction if suitable risk sharing approach adopted by Council. • Cost of works is 100% reimbursable through the DRFA. 	<ul style="list-style-type: none"> • Likely to remain unreasonably high price. • Eastern Roads REPA Package 01 still not approved by QRA. • Respondent likely to increase submitted price to account for change to their conditions of tender. • Reduced scope for Council funded complimentary works. • Sets new benchmark for future flood recovery contracts.

Option	Benefits	Risks
3. Accept the Tender from the preferred Respondent.	<ul style="list-style-type: none"> Flood restoration works to commence immediately upon QRA approval of submission. Cost of works is 100% reimbursable through the DRFA. 	<ul style="list-style-type: none"> Unreasonably high price. Eastern Roads REPA Package 01 still not approved by QRA. Likely variations will be submitted through delivery of the Contract due to conditions of Respondent's Tender. Reduced scope for Council funded complimentary works. Sets new benchmark for future flood recovery works.

It is the Panel's recommendation that Council proceed with **Option 1** above and do not accept any Tender under RFT2022-23-021. Should this be an unacceptable outcome, the Panel's second recommendation is to accept the Tender received from **Durack Civil Pty Ltd** for **\$35,434,410.77 (exclusive of GST)**, noting a process to further clarify and ultimately remove the stipulated conditions of their Tender is required.

Endorsement by the Evaluation Panel:

Name Liam Watson Manager Capital Delivery and Assets	Signature 	Date 28/04/2023
Name Robert McCarthy CRC / 2022 DRFA Events Program Manager	Signature	Date
Name Stuart Reeves CRC / 2022 DRFA Events Construction Manager	Signature	Date

Appendix A. Post-Tender Close Clarifications

POST CLOSING DATE NOTICE TO RESPONDENTS



Contract Number:	RFT2022-23-021
Contract Name:	2022 DRFA Events Construction Package 02
Respondent Name:	Civlec Pty Ltd
Notice to Respondents No.:	One (1)
Date:	Tuesday, 11/04/2023
Response Due Date and Time:	Thursday, 13/04/2023 at 12:00PM
Response To:	via VendorPanel

Note the following post tender box close clarification(s) request:

1	COUNCIL: Regarding Section 3.1 of your Tender Response, please provide the resume for Jarrod King.
	RESPONSE:

2	COUNCIL: Regarding Section 3.1 of your Tender Response, previous project examples provided for your nominated Project Team include various civil construction projects ranging in value from \$1M to \$5M (noting one member of the team has been involved in a \$22M project). Your planned monthly expenditure on this contract is nominated as \$1.8M. Please provide further clarification on the nominated Project Teams capability to deliver the works under this contract to assist with Council's evaluation of your Tender Response.
	RESPONSE:



POST CLOSING DATE NOTICE TO RESPONDENTS



3	<p>COUNCIL:</p> <p>Please provide clarification on your firm's financial capacity to deliver the works required under this contract.</p> <p>Referring to information provided in your response to RFP0522, this contract represents a very large proportion of your overall stated income from your 2021 tax return and the monthly cash flow projections also account for a very large proportion of your available cash and cash equivalents from your 2021 tax return.</p> <p>RESPONSE:</p>
4	<p>COUNCIL:</p> <p>Regarding Sections 3.2, 3.3, and 3.4 of your Tender Response, there is insufficient information provided for Council to determine if you have the capacity to deliver the scope of works required under this contract. Please provide further clarification on each item to assist with Council's evaluation of your Tender Response.</p> <p>Note that the Tender Evaluation Panel has deemed the current level of information provided in the above sections of your Tender Response as critically deficient and requires significant additional information to be considered a compliant Tender.</p> <p>RESPONSE:</p>
5	<p>COUNCIL:</p> <p>Regarding Section 3.5 of your Tender Response, the Gantt Chart provided shows delivery of works on roads in an alphabetical order. Please provide clarification on the delivery of the works in this manner to assist with Council's evaluation of your Tender Response.</p> <p>RESPONSE:</p>



POST CLOSING DATE NOTICE TO RESPONDENTS



6	<p>COUNCIL:</p> <p>Regarding Section 3.5 of your Tender Response, the Gantt Chart provided shows detailed design works occurring after roads nominated for detailed design have been constructed. Please provide clarification on this item to assist with Council's evaluation of your Tender Response.</p> <p>RESPONSE:</p>
---	--

7	<p>COUNCIL:</p> <p>Regarding Section 3.6 of your Tender Response, the Cash Flow provided shows a fixed monthly expenditure over the entirety of the construction program, including no apparent allowance for a Christmas period shutdown. Please provide clarification on this item to assist with Council's evaluation of your Tender Response.</p> <p>RESPONSE:</p>
---	--

8	<p>COUNCIL:</p> <p>Based on the Pricing Schedule submitted, please confirm that the following items are correct as they've been submitted with a tendered amount >50% lower than the median tendered amount:</p> <table border="1" data-bbox="256 1570 1362 1964"> <thead> <tr> <th>Work Item ID</th><th>Work Item Description</th></tr> </thead> <tbody> <tr> <td>20017.01</td><td>Planning of temporary traffic management (TMP)</td></tr> <tr> <td>20101.01</td><td>Contractor's site facilities</td></tr> <tr> <td>90513.01</td><td>Replace sign (complete) - standard road sign, includes post</td></tr> <tr> <td>91010.01</td><td>Crack Repair</td></tr> <tr> <td>92001.01</td><td>Reconstruct unbound granular base. Excludes seal</td></tr> <tr> <td>92002.01</td><td>Reconstruct unbound granular pavement. Excludes seal</td></tr> <tr> <td>92003.01</td><td>Patch repair - patch local unbound pavement failure (<20m2). Includes 2 coat bitumen seal</td></tr> <tr> <td>92521.01</td><td>Repair with flowable concrete</td></tr> <tr> <td>92526.01</td><td>Construct rock mattress</td></tr> <tr> <td>12620.01</td><td>Geotechnical investigation analysis and reporting (non-pavement)</td></tr> </tbody> </table>	Work Item ID	Work Item Description	20017.01	Planning of temporary traffic management (TMP)	20101.01	Contractor's site facilities	90513.01	Replace sign (complete) - standard road sign, includes post	91010.01	Crack Repair	92001.01	Reconstruct unbound granular base. Excludes seal	92002.01	Reconstruct unbound granular pavement. Excludes seal	92003.01	Patch repair - patch local unbound pavement failure (<20m2). Includes 2 coat bitumen seal	92521.01	Repair with flowable concrete	92526.01	Construct rock mattress	12620.01	Geotechnical investigation analysis and reporting (non-pavement)
Work Item ID	Work Item Description																						
20017.01	Planning of temporary traffic management (TMP)																						
20101.01	Contractor's site facilities																						
90513.01	Replace sign (complete) - standard road sign, includes post																						
91010.01	Crack Repair																						
92001.01	Reconstruct unbound granular base. Excludes seal																						
92002.01	Reconstruct unbound granular pavement. Excludes seal																						
92003.01	Patch repair - patch local unbound pavement failure (<20m2). Includes 2 coat bitumen seal																						
92521.01	Repair with flowable concrete																						
92526.01	Construct rock mattress																						
12620.01	Geotechnical investigation analysis and reporting (non-pavement)																						

POST CLOSING DATE NOTICE TO RESPONDENTS



12660.01	Potholing Investigation
12690.01	Engineering Survey (incl As-Con)
12940.01	Detailed engineering drawings
If a submitted rate is incorrect, please either advise of your intention to withdraw your Tender or accept the submitted rate as correct.	
RESPONSE:	

COUNCIL:	
Regarding Section 3.11 of your Tender Response, please complete and return the Respondent Declaration.	
9	RESPONSE:

Respondent:	
Respondent ABN/ACN:	
Authorised Representative:	
Signature:	
Date:	



13 April 2023

Gympie Regional Council via Vendor Panel
PO BOX 155
Gympie QLD 4570



Tender Submission – 2022 DRFA Events Construction Package 02

Further to your correspondence dated 11/04/2023 regarding clarifications to the above tender.

The tender would like to hereby withdraw from this tender due to the following reasons:

- Recently being awarded a similar sized project with the Byron Bay Council for flood repair works
- Insufficient resources to service both new projects in addition to completing legacy projects.

We appreciate the opportunity and hope we can assist Gympie Regional Council in future projects.

Should you have any queries, please phone myself on mobile 0417643197.

Yours sincerely



Robert Adair
Authorised Officer | GRC Civil

POST CLOSING DATE NOTICE TO RESPONDENTS



Contract Number:	RFT2022-23-021
Contract Name:	2022 DRFA Events Construction Package 02
Respondent Name:	Durack Civil Pty Ltd
Notice to Respondents No.:	One (1)
Date:	Tuesday, 11/04/2023
Response Due Date and Time:	Thursday, 13/04/2023 at 12:00PM
Response To:	via VendorPanel

Note the following post tender box close clarification(s) request:

1	<p>COUNCIL:</p> <p>Regarding Section 3.5 of your Tender Response, the Gantt Chart provided shows delivery of works on a work activity basis rather than on a road-by-road basis. Please provide clarification on the delivery of the works to assist with Council's evaluation of your Tender Response.</p>
	<p>RESPONSE:</p> <p>We had concerns about the complexity/clarity of the program if we were to link both road by road and activity by activity, due to the large number of roads – We have attached a pivot table of the durations per activity per road for additional info.</p> <p>We do not believe we can provide an accurate representation of road sequence until we can review each site in detail and staging may be impacted by detailed traffic requirements/emergent works etc that is very difficult to confirm at tender stage.</p> <p>Generally, the works would progress from the centre of Gympie outwards with various roads bunched into subregions to optimise plant shifts, crew resources and production.</p> <p>We have programmed the works to be delivered by 7 separate work crews.</p> <p>1 x seal crew following the pavement repair works</p> <p>1 x Asphalt crew</p> <p>2 x pavement repair crews</p> <p>1 x linemarking crew</p>



POST CLOSING DATE NOTICE TO RESPONDENTS



1 x small digger/combo – clearing, cut to spoil, rock, sign crew

1 x culvert/headwall/concrete crew

The sealed pavement work activities would be performed by 2 separate work crews, one stabilisation crew and one profiling mill and fill crew. The seal has been programmed at 1 visit per week of work to balance cure time/bake back and damage risk.

1 seal visit would over approx. 1000 – 1500 m2 of patch work per week based on past experience.

Linemarking works would generally follow the seal works as required after allowing sufficient cure times.

Asphalt works would be completed by a separate subcontracted asphalt crew.

Should further information re staging be required we are available for a meeting to discuss.

COUNCIL:

Regarding Section 3.6 of your Tender Response, the Cash Flow provided shows a fixed monthly expenditure over the entirety of the construction program, including no apparent allowance for a Christmas period shutdown. Please provide clarification on this item to assist with Council's evaluation of your Tender Response.

RESPONSE:

At this early stage, although the initial cash flow provided was an estimate, we believe the expenditure will be fairly consistent over the project duration. Please see below for a revised cash flow:

Although there will be a Christmas shutdown during the December period with a shorter number of days worked, there will still be a push in workload to finalise and secure various worksites.

Month	Amount (\$)	Cumulative Amount (\$)	% per month
May-23	\$1,063,032.32	\$1,063,032.32	3%
Jun-23	\$2,834,752.86	\$3,897,785.18	8%
Jul-23	\$3,543,441.08	\$7,441,226.26	10%
Aug-23	\$3,543,441.08	\$10,984,667.34	10%
Sep-23	\$3,543,441.08	\$14,528,108.42	10%

POST CLOSING DATE NOTICE TO RESPONDENTS



	Oct-23	\$3,897,785.18	\$18,425,893.60	11%
	Nov-23	\$3,897,785.18	\$22,323,678.79	11%
	Dec-23	\$2,834,752.86	\$25,158,431.65	8%
	Jan-24	\$3,897,785.18	\$29,056,216.83	11%
	Feb-24	\$3,897,785.18	\$32,954,002.02	11%
	Mar-24	\$2,480,408.75	\$35,434,410.77	7%

COUNCIL:

Please provide clarification on your firm's financial capacity to deliver the works required under this contract.

Referring to information provided in your response to RFP0522, this contract represents a significantly higher value than the projects listed in your previous contract experience.

RESPONSE:

When we provided the relevant project experience as part of the response to FRP0522, we included DFRA / NDRRA / Flood Restoration-style Projects as examples rather than examples based on project values.

3 Although this Contract does represent a larger value than some of our other previous projects, on average, our business delivers over 10 projects at any given time - currently representing \$6.36 mil in revenue per month.

We are currently delivering a road infrastructure project for Economic Development Queensland (EDQ) that has increased to \$14 Mil due for completion by end of June – Euroa Circuit Upgrade in Aldoga, Gladstone.

In addition, we had our prequalification level upgraded with DTMR to F50 in February 2023 based on current financials – revised prequalification certificate attached. Durack would be happy to provide current financial reports to support this if required.

We see this project as several smaller projects packaged into one – this project would represent approximately \$3.2 mil per month of revenue – we are fully equipped to deliver this volume of works over a 10 – 12 month period.

POST CLOSING DATE NOTICE TO RESPONDENTS



COUNCIL:

Based on the Pricing Schedule submitted, please confirm that the following items are correct as they've been submitted with a tendered amount >50% lower than the median tendered amount:

Work Item ID	Work Item Description
20203.01	Implement Environmental Management Plan (Construction)
91002.01	Medium formation grading
91004.01	Reshape table drain (1 side)
92501.01	Heavy formation grading incorporating 50mm of imported material

4

If a submitted rate is incorrect, please either advise of your intention to withdraw your Tender or accept the submitted rate as correct.

RESPONSE:

With reference to our tender cover letter, and based on past experience with similar works, item 20203.01 tends to be based of generic sediment plans and the flood repair scope usually presents minimal risk to the environment. In saying this, most of this scope is priced into the site overhead and spread across all rates.

For the other items, these represent a very small portion of the works and we believe they represent fair value.

COUNCIL:

Please confirm that the following items from the Pricing Schedule have been allowed for in another item in the schedule, as they've been submitted without a tendered amount:

Work Item ID	Work Item Description
20019.01	Implementation, maintenance, and removal of temporary traffic management

5

If a submitted rate is incorrect, please either advise of your intention to withdraw your Tender or accept the submitted rate as correct.

RESPONSE:

Yes this has been priced/spread across each pay item

POST CLOSING DATE NOTICE TO RESPONDENTS



6	<p>COUNCIL:</p> <p>It is noted your Tender Response is conditional on:</p> <ol style="list-style-type: none"> Any relocation/diversion/Lifting of existing underground/overhead services/loops to be completed by others. <p>Please clarify the following regarding this matter:</p> <ul style="list-style-type: none"> If required, will you project manage the relocations or expect all aspects of this work to be managed by others?
	<p>RESPONSE:</p> <p>We are happy to manage minor relocations as part of the works (assuming the cost of the relocations is borne by the Client).</p> <p>However, if larger more complex relocations are required, these may have to be managed under variation depending on potential clashes / impact with scope works – although, based on experience with similar flood damage work, we do not believe relocations to be frequent.</p>
7	<p>COUNCIL:</p> <p>It is noted your Tender Response is conditional on:</p> <ol style="list-style-type: none"> Due to unprecedented volatile nature of the civil construction industry there has been no allowance for cost escalation on supplied materials (inc. fuel) or subcontracted components of the work – to be negotiated post tender. <p>Please clarify the following regarding this matter:</p> <ul style="list-style-type: none"> How do you envisage any cost escalations being applied within the Contract (i.e. rise and fall calculation, re-negotiation of individual unit rates, dayworks rates, etc.)?
	<p>RESPONSE:</p> <p>We propose an open book approach for all major subcontracted items and supplied materials (i.e. Quarry, Concrete, Seal, Asphalt).</p>

POST CLOSING DATE NOTICE TO RESPONDENTS



In the event cost volatility occurs :

- a) DC (Durack Civil) will actively manage procurement to ensure value for money is achieved for the client.
- b) DC will provide updated quotations if required.
- c) The client will be liable for the cost difference.

For work items in the BOQ that predominately consist of plant an approximate fuel burn will be calculated to account for fuel cost fluctuations. Breakdowns of the estimate can be provided should fuel price volatility occur/if required.

COUNCIL:

It is noted your Tender Response is conditional on:

- 7. Price and final quantities subject to verification of design and existing levels.

Please clarify the following regarding this matter:

8

- Does this condition specifically relate to sites requiring detailed design, or is this a blanket condition across all works?
- How do you envisage price being impacted through "verification of design and existing levels", noting that this is a Schedule of Rates Contract and it is accepted that final quantities will be verified on-site?
- How do you envisage any price changes being applied within the Contract (i.e. rise and fall calculation, re-negotiation of individual unit rates, variation to establish new work item, dayworks rates, etc.)?

RESPONSE:

Yes, this was referring to detailed design sites only. Apologies for the confusion.

COUNCIL:

9

It is noted your Tender Response is conditional on:

POST CLOSING DATE NOTICE TO RESPONDENTS



2. There has been no allowance for:
- c. Delays associated with client proof rolls for patch repair works – we have assumed subbase and base will be placed immediately due to traffic staging requirements to have patches filled and closed up each night.

Please clarify the following regarding this matter:

- By not conducting a proof roll on the subbase pavement layer, the risk of failure of the work must rest with the Contractor. Is that the intent of this condition?
- When applying this methodology, are there any proposed changes to the defects liability period of the work?

RESPONSE:

Based on past experience with similar mill and fill projects, we have found that is difficult for both the Client and the Contractor to administer/provide value for money where there are onerous proof roll hold points at ever layer on numerous smaller patch sites.

Whilst we do not intend to take the risk on the treatment, we can usually assume that if the subgrade passes proof roll then the sub-base will also. This is then confirmed by the base layer proof roll.

Generally, if we have concerns about the sub-base layer proof roll we intend to advise the client on a case by case basis. We believe this provides a more practical approach to the scope of works.

COUNCIL:

It is noted your Tender Response is conditional on:

2. There has been no allowance for:
- n. Start date/program subject to crew and material availability at time of award.

Please clarify the following regarding this matter:

- How does this condition impact your ability to deliver the works by the required Date for Practical Completion?

10

POST CLOSING DATE NOTICE TO RESPONDENTS



RESPONSE:

During the tender period we have discussed availability with our key subcontractors and suppliers however due to the nature of the market, availability needs to be reconfirmed at time of award.

We also note delays awarding the contract have implications to the date to practical completion.

In the unlikely event we are delayed starting the works we will actively work to accelerate the program through additional resources if possible.

COUNCIL:

It is noted your Tender Response is conditional on:

3. We have assumed:

- e. Material will be available from hytec quarry during the works – they have advised that there is a small risk they may not be able to supply and will know more closer to start date.

Please clarify the following regarding this matter:

- 11
- Do you have any contingency measures in place should Hytec not be able to supply?

RESPONSE:

There are several other quarry sources available:

- a) Corbetts
- b) Boral
- c) Cordwells

We have used a mixture of these three quarries (based on the most cost-effective haul distances) in preparing our tender submission.

POST CLOSING DATE NOTICE TO RESPONDENTS



In the event that the quarries are unable to supply we propose to manage cost escalation (if present) in an open book manner as described previously.

COUNCIL:

It is noted your Tender Response is conditional on:

3. We have assumed:
- n. Same day 2 coat seal i.e. both coats installed same day – no allowance for prime.

Please clarify the following regarding this matter:

- 12
- Will your nominated sealing sub-contractor conduct the seal design to account for this methodology?

RESPONSE:

That's correct – we have based the seal design on a same day 2 coat C170 seal with lower cutter in the bottom layer – in order to provide best value for money and based on similar successfully delivered flood damage projects in Qld.

We are happy to negotiate alternative designs if required.

COUNCIL:

It is noted your Tender Response is conditional on:

3. We have assumed:
- p. Use of small posi profiler head for stab patches with a width of less than 2 m and hand spreading of cement to precalculated tip rates.

13

Please clarify the following regarding this matter:

- Provide recent project examples of hand spreading of cement powder being applied successfully.

POST CLOSING DATE NOTICE TO RESPONDENTS




RESPONSE:

We recently completed many smaller patches for Goondiwindi Councils flood damage program. We completed the sites narrower than 2 m with a 1 m wide specially designed cement spreader trailer which could be employed for the smaller patches on this site - <https://www.shouldermaster.com.au/spreader-trailers>

We intend to implement the use of these spreaders on this project.

Hand spreading would only be needed on very small sites where a full width spreader is unable to spread accurately. We have completed this methodology successfully on RMPC project for Isaac Regional Council in 2020.

Respondent:	Durack Civil Pty Ltd
Respondent ABN/ACN:	35 633 665 380
Authorised Representative:	James Durack
Signature:	
Date:	13 April 2023

Certificate of Prequalification

Austrroads' National Prequalification System for Civil (Road and Bridge) Construction Contracts

This is to certify that

Durack Civil Pty Ltd

ABN: 35 633 665 380

is prequalified with the Department of Transport and Main Roads at

Roadworks Level	R2
Bridgeworks Level	B2
Financial Level	F50
Prequalification Status	FULL



Secretary of the Prequalification Committee

To confirm the validity of the registration for this certificate please visit www.tmr.qld.gov.au

Certificate Number: **Q23107**

Assessing Authority: QLD-TMR

Issue Date: 28 February 2023

Expiry Date: 28 February 2026

Row Labels	Sum of dur
Amamoor Creek Road	30.17
Bitumen spray seal, 2-coat	5.03
Bulk excavate surplus material and remove from site	2.98
Bulk fill - imported	0.20
Clear mixed debris and remove from site	0.03
Desilt drainage structure - removal of silt and debris	1.00
Edge Repair	7.60
Heavy shoulder grading - incorporating 50mm of imported material	0.15
In-situ stabilisation - including 50mm corrector. Excludes seal	1.00
Patch repair - patch local unbound pavement failure (<20m2). Includes 2 coat bitumen seal	3.50
Pothole repair <1m2	
Reconstruct unbound granular base. Excludes seal	6.68
Reconstruct unbound granular pavement. Excludes seal	0.32
Reconstruct unsealed shoulder - repair isolated shoulder failure (<20m2)	0.10
Repair with flowable concrete	0.75
Replace sign (complete) - standard road sign, includes post	
Replace sign face only - standard road sign	
Reshape table drain (1 side)	
Rock protection	0.83
Amamoor Dagun Road	11.53
Bitumen spray seal, 2-coat	0.24
Bulk fill - imported	0.26
Edge Repair	3.80
Heavy shoulder grading - incorporating 50mm of imported material	2.62
In-situ stabilisation - including 50mm corrector. Excludes seal	0.50
Patch repair - patch local unbound pavement failure (<20m2). Includes 2 coat bitumen seal	2.80
Pothole repair <1m2	
Reconstruct unbound granular pavement. Excludes seal	0.79
Reconstruct unsealed shoulder - repair isolated shoulder failure (<20m2)	0.30
Replace guide posts or markers	
Rock protection	0.22
Anderleigh Road	14.61
Bitumen spray seal, 2-coat	2.43
Bulk excavate surplus material and remove from site	0.25
Bulk fill - imported	0.10
Construct rock mattress	
Edge Repair	0.20
In-situ stabilisation - including 50mm corrector. Excludes seal	2.78
Patch repair - patch local unbound pavement failure (<20m2). Includes 2 coat bitumen seal	3.50
Pothole repair <1m2	
Reconstruct reinforced concrete	1.00
Reconstruct unbound granular pavement. Excludes seal	3.86
Replace guide posts or markers	
Replace head/end wall <375mm pipe or RCBC	0.50
Replace sign (complete) - standard road sign, includes post	
Ascot Road	0.43
Bulk excavate surplus material and remove from site	0.35
Bulk fill - imported	0.06
Clear mixed debris and remove from site	0.02
Pothole repair <1m2	
Replace guide posts or markers	
Reshape table drain (1 side)	
Banks Pocket Road	3.41
Bulk excavate surplus material and remove from site	0.05

Heavy formation grading incorporating 75mm of imported material	2.19
Rock protection	1.17
Bayside Road	2.81
Bitumen spray seal, 2-coat	0.28
Heavy formation grading incorporating 75mm of imported material	1.18
In-situ stabilisation - including 50mm corrector. Excludes seal	0.99
Patch repair - patch local unbound pavement failure (<20m2). Includes 2 coat bitumen seal	0.35
Pothole repair <1m2	
Bella Creek Road	6.89
Bitumen spray seal, 2-coat	0.25
Bulk fill - imported	0.02
Desilt drainage structure - removal of silt and debris	0.25
In-situ stabilisation - including 50mm corrector. Excludes seal	0.88
Reconstruct reinforced concrete	5.00
Repair stone pitching	0.50
Replace guide posts or markers	
Blackgate Road	3.74
Bitumen spray seal, 2-coat	0.17
Bulk fill - imported	0.14
Clear mixed debris and remove from site	0.20
In-situ stabilisation - including 50mm corrector. Excludes seal	0.25
Patch repair - patch local unbound pavement failure (<20m2). Includes 2 coat bitumen seal	0.35
Reconstruct unbound granular pavement. Excludes seal	0.54
Replace concrete pipe <600mm dia.	1.00
Replace head/end wall <600mm pipe or RCBC	1.00
Rock protection	0.09
Bolcaro Road	1.73
Bitumen spray seal, 2-coat	0.45
Reconstruct unbound granular pavement. Excludes seal	1.27
Bradys Road	1.00
Gravel Resheeting 100mm	1.00
Burgess Road	7.07
Bitumen spray seal, 2-coat	0.05
Bulk fill - imported	0.79
Desilt drainage structure - removal of silt and debris	0.50
Edge Repair	0.20
Heavy formation grading incorporating 50mm of imported material	0.23
Heavy formation grading incorporating 75mm of imported material	3.09
Medium formation grading	0.15
Patch repair - patch local unbound pavement failure (<20m2). Includes 2 coat bitumen seal	1.40
Reconstruct unbound granular base. Excludes seal	0.36
Reconstruct unsealed shoulder - repair isolated shoulder failure (<20m2)	0.30
Calico Creek Road	12.59
Bitumen spray seal, 2-coat	0.47
Bulk excavate surplus material and remove from site	0.41
Bulk fill - imported	0.66
Desilt drainage structure - removal of silt and debris	0.25
Edge Repair	1.00
Heavy formation grading incorporating 50mm of imported material	1.11
Heavy formation grading incorporating 75mm of imported material	0.21
Heavy shoulder grading - incorporating 50mm of imported material	1.95
Patch repair - patch local unbound pavement failure (<20m2). Includes 2 coat bitumen seal	0.70
Pothole repair <1m2	
Reconstruct reinforced concrete	2.00
Reconstruct unbound granular pavement. Excludes seal	1.13

Repair with flowable concrete	0.25
Replace concrete pipe <375mm dia.	1.00
Replace head/end wall <375mm pipe or RCBC	0.50
Reshape table drain (1 side)	
Rock protection	0.96
Calton Hill	3.00
Asphalt surfacing, <50mm thickness	1.00
Reconstruct unbound granular pavement. Excludes seal	2.00
Carlo Road	6.11
Bitumen spray seal, 2-coat	2.68
Heavy shoulder grading - incorporating 50mm of imported material	0.20
Patch repair - patch local unbound pavement failure (<20m2). Includes 2 coat bitumen seal	0.35
Pothole repair <1m2	
Reconstruct unbound granular base. Excludes seal	2.71
Reconstruct unbound granular pavement. Excludes seal	0.17
Cartwright Road	1.43
Bitumen spray seal, 2-coat	0.27
Reconstruct unbound granular pavement. Excludes seal	1.15
Centro Way	
Crack Repair	
Clarkson Drive	3.77
Bitumen spray seal, 2-coat	1.11
Desilt drainage structure - removal of silt and debris	0.75
Patch repair - patch local unbound pavement failure (<20m2). Includes 2 coat bitumen seal	0.35
Pothole repair <1m2	
Reconstruct unbound granular base. Excludes seal	1.56
Cliff Jones Road	1.75
Edge Repair	0.40
Heavy shoulder grading - incorporating 50mm of imported material	0.30
Patch repair - patch local unbound pavement failure (<20m2). Includes 2 coat bitumen seal	0.35
Reconstruct unsealed shoulder - repair isolated shoulder failure (<20m2)	0.70
Reshape table drain (1 side)	
Coles Creek Road	3.06
Bitumen spray seal, 2-coat	0.54
Bulk excavate surplus material and remove from site	0.38
Heavy shoulder grading - incorporating 50mm of imported material	0.10
In-situ stabilisation - including 50mm corrector. Excludes seal	0.50
Reconstruct unbound granular base. Excludes seal	0.79
Reconstruct unbound granular pavement. Excludes seal	0.26
Reconstruct unsealed shoulder - repair isolated shoulder failure (<20m2)	0.10
Reinstate line marking	0.40
Replace guide posts or markers	
Copp Road	0.58
Bitumen spray seal, 2-coat	0.11
Reconstruct unbound granular pavement. Excludes seal	0.47
Corella Road	1.74
Bulk excavate surplus material and remove from site	0.53
Bulk fill - imported	0.51
Patch repair - patch local unbound pavement failure (<20m2). Includes 2 coat bitumen seal	0.35
Pothole repair <1m2	
Reshape table drain (1 side)	
Rock protection	0.35
Counter Road	5.35
Bitumen spray seal, 2-coat	0.33
Bulk excavate surplus material and remove from site	0.22

Bulk fill - imported	0.79
Clear mixed debris and remove from site	0.03
Construct rock mattress	
Desilt drainage structure - removal of silt and debris	1.00
Edge Repair	0.20
Heavy shoulder grading - incorporating 50mm of imported material	0.33
Patch repair - patch local unbound pavement failure (<20m2). Includes 2 coat bitumen seal	0.35
Pothole repair <1m2	
Reconstruct unbound granular base. Excludes seal	0.14
Reconstruct unbound granular pavement. Excludes seal	0.86
Reconstruct unsealed shoulder - repair isolated shoulder failure (<20m2)	0.80
Repair with flowable concrete	0.25
Reshape table drain (1 side)	
Rock protection	0.05
Crescent Road	1.61
Bitumen spray seal, 2-coat	0.61
In-situ stabilisation - including 50mm corrector. Excludes seal	1.00
Dagun Road	2.84
Bitumen spray seal, 2-coat	0.03
Bulk excavate surplus material and remove from site	0.08
Bulk fill - imported	0.13
Desilt drainage structure - removal of silt and debris	0.75
Heavy shoulder grading - incorporating 50mm of imported material	0.62
Patch repair - patch local unbound pavement failure (<20m2). Includes 2 coat bitumen seal	0.70
Pothole repair <1m2	
Reconstruct unbound granular pavement. Excludes seal	0.24
Reconstruct unsealed shoulder - repair isolated shoulder failure (<20m2)	0.20
Reshape table drain (1 side)	
Rock protection	0.09
Dan Meurant Drive	0.48
Bulk fill - imported	0.01
Heavy shoulder grading - incorporating 50mm of imported material	0.37
Reconstruct unsealed shoulder - repair isolated shoulder failure (<20m2)	0.10
Reshape table drain (1 side)	
David Drive	0.36
Clear mixed debris and remove from site	0.01
Heavy shoulder grading - incorporating 50mm of imported material	0.35
Replace guide posts or markers	
Reshape table drain (1 side)	
Dawn Road	4.28
Bitumen spray seal, 2-coat	0.09
Bulk excavate surplus material and remove from site	0.08
Bulk fill - imported	0.04
Desilt drainage structure - removal of silt and debris	0.50
Heavy formation grading incorporating 50mm of imported material	0.34
Heavy formation grading incorporating 75mm of imported material	1.84
Heavy shoulder grading - incorporating 50mm of imported material	0.10
Patch repair - patch local unbound pavement failure (<20m2). Includes 2 coat bitumen seal	0.70
Reconstruct unbound granular base. Excludes seal	0.36
Repair stone pitching	0.15
Replace guide posts or markers	
Rock protection	0.10
Dennis Little Drive	
Pothole repair <1m2	
Dobson Road	0.22

Bitumen spray seal, 2-coat	0.17
Bulk fill - imported	0.02
Clear mixed debris and remove from site	0.04
Pothole repair <1m2	
Replace sign (complete) - standard road sign, includes post	
Replace sign face only - standard road sign	
Drummond Drive	3.20
Bitumen spray seal, 2-coat	0.56
Bulk fill - imported	0.18
Edge Repair	0.20
In-situ stabilisation - including 50mm corrector. Excludes seal	1.20
Patch repair - patch local unbound pavement failure (<20m2). Includes 2 coat bitumen seal	0.70
Pothole repair <1m2	
Reconstruct unbound granular pavement. Excludes seal	0.36
Duke Street	1.58
Asphalt surfacing, <50mm thickness	0.75
In-situ stabilisation - including 50mm corrector. Excludes seal	0.48
Patch repair - patch local unbound pavement failure (<20m2). Includes 2 coat bitumen seal	0.35
Eel Creek Road	1.49
Desilt drainage structure - removal of silt and debris	0.25
Repair with flowable concrete	1.00
Rock protection	0.24
Fisher Road	1.97
Bitumen spray seal, 2-coat	0.25
Clear mixed debris and remove from site	0.03
Heavy formation grading	0.38
Heavy shoulder grading - incorporating 50mm of imported material	0.15
Reconstruct unbound granular pavement. Excludes seal	1.07
Reinstate line marking	0.10
Flood Road	3.65
Bitumen spray seal, 2-coat	0.20
Edge Repair	0.60
Heavy shoulder grading - incorporating 50mm of imported material	2.00
Reconstruct unbound granular pavement. Excludes seal	0.85
Fraser Road	6.47
Bitumen spray seal, 2-coat	2.21
Bulk fill - imported	0.05
In-situ stabilisation - including 50mm corrector. Excludes seal	1.00
Pothole repair <1m2	
Reconstruct unbound granular pavement. Excludes seal	2.62
Reinstate line marking	0.60
Reshape table drain (1 side)	
Fritz Road	0.96
Bitumen spray seal, 2-coat	0.06
Bulk fill - imported	0.10
Heavy shoulder grading - incorporating 50mm of imported material	0.30
Reconstruct unbound granular pavement. Excludes seal	0.50
Reshape table drain (1 side)	
Glastonbury Creek Road	3.75
Bitumen spray seal, 2-coat	0.17
Bulk fill - imported	0.10
Edge Repair	0.60
Heavy shoulder grading - incorporating 50mm of imported material	0.15
Patch repair - patch local unbound pavement failure (<20m2). Includes 2 coat bitumen seal	0.35
Pothole repair <1m2	

Reconstruct reinforced concrete	1.50
Reconstruct unbound granular pavement. Excludes seal	0.72
Repair stone pitching	0.15
Graham Street	7.91
Asphalt surfacing, <50mm thickness	2.75
Patch repair - patch local unbound pavement failure (<20m ²). Includes 2 coat bitumen seal	0.35
Reconstruct unbound granular base. Excludes seal	0.32
Reconstruct unbound granular pavement. Excludes seal	4.49
Greendale Road	4.02
Bitumen spray seal, 2-coat	0.78
Bulk excavate surplus material and remove from site	0.28
Bulk fill - imported	0.42
Clear mixed debris and remove from site	0.07
Construct rock mattress	
Edge Repair	0.20
Heavy shoulder grading - incorporating 50mm of imported material	0.10
Reconstruct unbound granular pavement. Excludes seal	2.17
Groundwater Road	8.74
Asphalt surfacing, <50mm thickness	2.00
Bitumen spray seal, 2-coat	0.32
Clear mixed debris and remove from site	0.01
Patch repair - patch local unbound pavement failure (<20m ²). Includes 2 coat bitumen seal	0.35
Reconstruct unbound granular base. Excludes seal	0.24
Reconstruct unbound granular pavement. Excludes seal	5.63
Reinstate line marking	0.20
Hall Road	1.17
Bitumen spray seal, 2-coat	0.11
Reconstruct unbound granular pavement. Excludes seal	0.96
Reinstate line marking	0.10
Hart Road	0.20
Edge Repair	0.20
Harvey Siding Road	20.18
Bitumen spray seal, 2-coat	1.49
Bulk fill - imported	0.09
Clear mixed debris and remove from site	0.05
Edge Repair	6.00
Heavy shoulder grading - incorporating 50mm of imported material	2.98
In-situ stabilisation - including 50mm corrector. Excludes seal	2.01
Patch repair - patch local unbound pavement failure (<20m ²). Includes 2 coat bitumen seal	5.60
Pothole repair <1m ²	
Reconstruct unbound granular pavement. Excludes seal	1.45
Repair road signage	
Replace guide posts or markers	
Replace head/end wall <375mm pipe or RCBC	0.50
Reshape table drain (1 side)	
Henry Street	0.35
Patch repair - patch local unbound pavement failure (<20m ²). Includes 2 coat bitumen seal	0.35
Pothole repair <1m ²	
Hilton Road	0.35
Patch repair - patch local unbound pavement failure (<20m ²). Includes 2 coat bitumen seal	0.35
Hoopers Road	0.90
Bulk fill - imported	0.25
Edge Repair	0.20
Patch repair - patch local unbound pavement failure (<20m ²). Includes 2 coat bitumen seal	0.35
Reconstruct unsealed shoulder - repair isolated shoulder failure (<20m ²)	0.10

Reshape table drain (1 side)	
Ian Drive	1.99
Clear mixed debris and remove from site	0.19
Edge Repair	0.80
Heavy shoulder grading - incorporating 50mm of imported material	1.00
Replace guide posts or markers	
Reshape table drain (1 side)	
Imbil Brooloo Road	10.08
Bitumen spray seal, 2-coat	0.71
Bulk excavate surplus material and remove from site	0.56
Bulk fill - imported	0.69
Desilt drainage structure - removal of silt and debris	0.75
Edge Repair	0.40
Heavy shoulder grading - incorporating 50mm of imported material	0.10
In-situ stabilisation - including 50mm corrector. Excludes seal	0.98
Pothole repair <1m2	
Reconstruct unbound granular pavement. Excludes seal	1.32
Repair stone pitching	1.50
Replace guide posts or markers	
Replace head/end wall <600mm pipe or RCBC	2.00
Reshape table drain (1 side)	
Rock protection	1.07
Inskip Avenue	3.28
Bitumen spray seal, 2-coat	0.23
Desilt drainage structure - removal of silt and debris	0.50
Patch repair - patch local unbound pavement failure (<20m2). Includes 2 coat bitumen seal	1.75
Reconstruct unbound granular base. Excludes seal	0.80
Inskip Point Road	1.60
Desilt drainage structure - removal of silt and debris	1.50
Heavy shoulder grading - incorporating 50mm of imported material	0.10
Investigator Avenue	0.35
Patch repair - patch local unbound pavement failure (<20m2). Includes 2 coat bitumen seal	0.35
Jaycee Way	3.16
Asphalt surfacing, <50mm thickness	1.00
Reconstruct unbound granular base. Excludes seal	2.16
Jimbour Road	7.52
Bitumen spray seal, 2-coat	0.11
Bulk fill - imported	0.25
Construct rock mattress	
Edge Repair	0.80
Heavy shoulder grading - incorporating 50mm of imported material	0.20
In-situ stabilisation - including 50mm corrector. Excludes seal	0.38
Patch repair - patch local unbound pavement failure (<20m2). Includes 2 coat bitumen seal	0.70
Reconstruct reinforced concrete	2.50
Replace concrete pipe <375mm dia.	0.50
Replace guide posts or markers	
Replace head/end wall >1200mm pipe or RCBC	2.00
Reshape table drain (1 side)	
Rock protection	0.08
John Street	1.71
Asphalt surfacing, <50mm thickness	0.75
Reconstruct unbound granular base. Excludes seal	0.96
Kandanga Amamoor Road	8.99
Asphalt surfacing, <50mm thickness	0.75
Bitumen spray seal, 2-coat	1.18

Bulk fill - imported	0.11
Edge Repair	0.20
Heavy shoulder grading - incorporating 50mm of imported material	0.20
Other - provide details of treatment within 'Damage description' field	
Patch repair - patch local unbound pavement failure (<20m2). Includes 2 coat bitumen seal	2.10
Pothole repair <1m2	
Reconstruct unbound granular base. Excludes seal	0.19
Reconstruct unbound granular pavement. Excludes seal	2.93
Repair stone pitching	0.30
Replace guide posts or markers	
Replace head/end wall <600mm pipe or RCBC	1.00
Replace sign face only - standard road sign	
Rock protection	0.02
Kandanga Creek Road	2.30
Bitumen spray seal, 2-coat	0.04
Clear mixed debris and remove from site	0.51
Desilt drainage structure - removal of silt and debris	0.25
Patch repair - patch local unbound pavement failure (<20m2). Includes 2 coat bitumen seal	1.05
Pothole repair <1m2	
Reconstruct unbound granular pavement. Excludes seal	0.45
Kandanga Imbil Road	31.05
Bitumen spray seal, 2-coat	5.26
Bulk excavate surplus material and remove from site	0.75
Bulk fill - imported	0.32
Clear mixed debris and remove from site	0.03
Edge Repair	0.20
Heavy shoulder grading - incorporating 50mm of imported material	0.20
In-situ stabilisation - including 50mm corrector. Excludes seal	5.55
Patch repair - patch local unbound pavement failure (<20m2). Includes 2 coat bitumen seal	7.35
Pothole repair <1m2	
Reconstruct unbound granular base. Excludes seal	0.07
Reconstruct unbound granular pavement. Excludes seal	5.22
Reinstate line marking	4.50
Replace guide posts or markers	
Replace head/end wall <600mm pipe or RCBC	1.00
Replace sign face only - standard road sign	
Rock protection	0.60
Kanyan Road	3.90
Bitumen spray seal, 2-coat	0.32
Bulk excavate surplus material and remove from site	0.20
Bulk fill - imported	0.06
Edge Repair	0.60
In-situ stabilisation - including 50mm corrector. Excludes seal	0.60
Patch repair - patch local unbound pavement failure (<20m2). Includes 2 coat bitumen seal	0.70
Reconstruct unbound granular pavement. Excludes seal	1.05
Reshape table drain (1 side)	
Rock protection	0.38
Karoonda Road	1.68
Bitumen spray seal, 2-coat	0.19
Patch repair - patch local unbound pavement failure (<20m2). Includes 2 coat bitumen seal	0.35
Reconstruct unbound granular base. Excludes seal	0.18
Reconstruct unbound granular pavement. Excludes seal	0.96
Keefton Road	6.77
Bitumen spray seal, 2-coat	0.23
Bulk excavate surplus material and remove from site	0.55

Clear mixed debris and remove from site	0.20
Gravel Resheeting 100mm	0.25
Heavy formation grading incorporating 75mm of imported material	4.58
Reconstruct unbound granular pavement. Excludes seal	0.96
Lawrence Street	0.35
Patch repair - patch local unbound pavement failure (<20m2). Includes 2 coat bitumen seal	0.35
Lindleys Lane	7.33
Asphalt surfacing, <50mm thickness	2.00
Bulk fill - imported	0.76
Reconstruct unbound granular pavement. Excludes seal	4.27
Reinstate line marking	0.30
Little Bella Creek Road	1.85
Patch repair - patch local unbound pavement failure (<20m2). Includes 2 coat bitumen seal	0.35
Reconstruct reinforced concrete	1.50
Lockhart Road	5.54
Bitumen spray seal, 2-coat	1.22
Desilt drainage structure - removal of silt and debris	0.50
Edge Repair	0.40
Reconstruct unbound granular pavement. Excludes seal	3.42
Mary Street	0.73
Asphalt surfacing, <50mm thickness	0.25
Reconstruct unbound granular pavement. Excludes seal	0.48
McIntosh Creek Road	3.11
Bulk fill - imported	0.04
Construct rock mattress	
Desilt drainage structure - removal of silt and debris	1.00
Gravel Resheeting 100mm	2.00
Rock protection	0.07
Meddleton Road	4.38
Bitumen spray seal, 2-coat	0.33
Bulk fill - imported	0.37
Clear mixed debris and remove from site	0.03
Desilt drainage structure - removal of silt and debris	1.00
Gravel Resheeting 100mm	0.20
Heavy shoulder grading - incorporating 50mm of imported material	0.51
In-situ stabilisation - including 50mm corrector. Excludes seal	0.60
Pothole repair <1m2	
Reconstruct unbound granular base. Excludes seal	0.65
Reinstate line marking	0.20
Replace guide posts or markers	
Replace head/end wall <375mm pipe or RCBC	0.50
Replace sign face only - standard road sign	
Reshape table drain (1 side)	
Melawondi Road	11.99
Bitumen spray seal, 2-coat	0.90
Bulk excavate surplus material and remove from site	0.58
Bulk fill - imported	1.18
Clear mixed debris and remove from site	0.08
Construct rock mattress	
Desilt drainage structure - removal of silt and debris	1.00
Edge Repair	0.60
Gravel Resheeting 100mm	1.40
Heavy formation grading	0.50
Heavy formation grading incorporating 75mm of imported material	0.45
Heavy shoulder grading - incorporating 50mm of imported material	0.20

In-situ stabilisation - including 50mm corrector. Excludes seal	0.50
Patch repair - patch local unbound pavement failure (<20m ²). Includes 2 coat bitumen seal	1.75
Reconstruct unbound granular pavement. Excludes seal	2.28
Reconstruct unsealed shoulder - repair isolated shoulder failure (<20m ²)	0.20
Repair with flowable concrete	0.25
Replace guide posts or markers	
Replace sign face only - standard road sign	
Reshape table drain (1 side)	
Rock protection	0.13
Monkland Street	1.35
Asphalt surfacing, <50mm thickness	0.50
In-situ stabilisation - including 50mm corrector. Excludes seal	0.50
Patch repair - patch local unbound pavement failure (<20m ²). Includes 2 coat bitumen seal	0.35
Mooloo Road	17.71
Bitumen spray seal, 2-coat	1.52
Bulk excavate surplus material and remove from site	1.29
Bulk fill - imported	0.82
Clear mixed debris and remove from site	0.29
Desilt drainage structure - removal of silt and debris	0.25
Edge Repair	1.40
Gravel Resheeting 100mm	0.30
Heavy formation grading	0.19
Heavy formation grading incorporating 50mm of imported material	0.08
Heavy shoulder grading - incorporating 50mm of imported material	0.80
In-situ stabilisation - including 50mm corrector. Excludes seal	1.13
Patch repair - patch local unbound pavement failure (<20m ²). Includes 2 coat bitumen seal	2.45
Pothole repair <1m ²	
Reconstruct concrete kerb	
Reconstruct reinforced concrete	2.00
Reconstruct unbound granular base. Excludes seal	1.56
Reconstruct unbound granular pavement. Excludes seal	1.22
Reconstruct unsealed shoulder - repair isolated shoulder failure (<20m ²)	0.10
Repair stone pitching	0.50
Repair with flowable concrete	0.50
Replace concrete pipe <375mm dia.	0.50
Replace guide posts or markers	
Replace head/end wall <375mm pipe or RCBC	0.50
Reshape table drain (1 side)	
Rock protection	0.31
Mount Pleasant Road	1.46
Asphalt surfacing, <50mm thickness	0.50
Reconstruct unbound granular pavement. Excludes seal	0.96
Moy Pocket Road	1.18
Bitumen spray seal, 2-coat	0.13
Reconstruct unbound granular pavement. Excludes seal	1.06
Nash Road	3.40
Bulk excavate surplus material and remove from site	0.74
Bulk fill - imported	0.30
Clear mixed debris and remove from site	0.99
Edge Repair	0.20
Patch repair - patch local unbound pavement failure (<20m ²). Includes 2 coat bitumen seal	0.35
Pothole repair <1m ²	
Reconstruct unsealed shoulder - repair isolated shoulder failure (<20m ²)	0.20
Repair with flowable concrete	0.25
Rock protection	0.37

Nash Street	0.35
Patch repair - patch local unbound pavement failure (<20m ²). Includes 2 coat bitumen seal	0.35
Neerdie Road	18.36
Bitumen spray seal, 2-coat	2.09
Bulk excavate surplus material and remove from site	1.48
Bulk fill - imported	1.79
Clear mixed debris and remove from site	0.09
Desilt drainage structure - removal of silt and debris	0.50
Edge Repair	3.40
Heavy formation grading incorporating 75mm of imported material	2.75
Heavy shoulder grading - incorporating 50mm of imported material	0.15
In-situ stabilisation - including 50mm corrector. Excludes seal	1.01
Patch repair - patch local unbound pavement failure (<20m ²). Includes 2 coat bitumen seal	0.70
Pothole repair <1m ²	
Reconstruct unbound granular pavement. Excludes seal	4.09
Reconstruct unsealed shoulder - repair isolated shoulder failure (<20m ²)	0.10
Reinstate line marking	0.10
Repair road signage	
Replace guide posts or markers	
Reshape table drain (1 side)	
Rock protection	0.12
Neusavale Road	23.15
Bitumen spray seal, 2-coat	5.71
Bulk excavate surplus material and remove from site	0.25
Bulk fill - imported	0.81
Clear mixed debris and remove from site	0.19
Desilt drainage structure - removal of silt and debris	1.25
Edge Repair	0.60
Heavy shoulder grading - incorporating 50mm of imported material	2.85
In-situ stabilisation - including 50mm corrector. Excludes seal	7.99
Patch repair - patch local unbound pavement failure (<20m ²). Includes 2 coat bitumen seal	2.10
Pothole repair <1m ²	
Reconstruct unsealed shoulder - repair isolated shoulder failure (<20m ²)	0.80
Replace guide posts or markers	
Reshape table drain (1 side)	
Rock protection	0.60
Noosa Road	13.21
Bulk excavate surplus material and remove from site	2.27
Bulk fill - imported	0.46
Clear mixed debris and remove from site	0.07
Desilt drainage structure - removal of silt and debris	0.50
Gravel Resheeting 100mm	1.00
Heavy formation grading	0.19
Heavy formation grading incorporating 50mm of imported material	0.88
Heavy formation grading incorporating 75mm of imported material	7.35
Replace head/end wall <375mm pipe or RCBC	0.50
North Deep Creek Road	5.01
Bulk excavate surplus material and remove from site	0.03
Bulk fill - imported	0.61
Clear mixed debris and remove from site	0.10
Heavy formation grading incorporating 50mm of imported material	3.44
Heavy formation grading incorporating 75mm of imported material	0.81
Reshape table drain (1 side)	
Rock protection	0.03
Oak Street	1.46

Asphalt surfacing, <50mm thickness	0.50
Reconstruct unbound granular pavement. Excludes seal	0.96
OConnell Street	3.68
Bitumen spray seal, 2-coat	1.53
Reconstruct unbound granular base. Excludes seal	2.15
Old Goomboorian Road	14.64
Bitumen spray seal, 2-coat	1.13
Bulk excavate surplus material and remove from site	0.38
Bulk fill - imported	0.02
Desilt drainage structure - removal of silt and debris	1.75
Gravel Resheeting 100mm	1.00
Heavy formation grading incorporating 75mm of imported material	1.58
Heavy shoulder grading - incorporating 50mm of imported material	2.48
Patch repair - patch local unbound pavement failure (<20m2). Includes 2 coat bitumen seal	0.70
Reconstruct unbound granular pavement. Excludes seal	3.95
Repair stone pitching	0.15
Replace guide posts or markers	
Replace head/end wall <375mm pipe or RCBC	1.50
Reshape table drain (1 side)	
Rock protection	0.01
Old Gympie Road	5.91
Bitumen spray seal, 2-coat	0.13
Bulk excavate surplus material and remove from site	1.86
Bulk fill - imported	0.22
Clear mixed debris and remove from site	0.02
Edge Repair	1.00
Heavy shoulder grading - incorporating 50mm of imported material	1.04
Patch repair - patch local unbound pavement failure (<20m2). Includes 2 coat bitumen seal	0.35
Pothole repair <1m2	
Reconstruct unbound granular pavement. Excludes seal	1.09
Reconstruct unsealed shoulder - repair isolated shoulder failure (<20m2)	0.20
Replace guide posts or markers	
Replace sign (complete) - standard road sign, includes post	
Replace sign face only - standard road sign	
Reshape table drain (1 side)	
Old Maryborough Road	16.73
Bitumen spray seal, 2-coat	4.13
Clear mixed debris and remove from site	0.01
Edge Repair	0.20
Heavy shoulder grading - incorporating 50mm of imported material	0.25
In-situ stabilisation - including 50mm corrector. Excludes seal	2.00
Patch repair - patch local unbound pavement failure (<20m2). Includes 2 coat bitumen seal	3.15
Pothole repair <1m2	
Reconstruct unbound granular pavement. Excludes seal	5.64
Reinstate line marking	0.50
Rock protection	0.85
Ormes Road	0.13
Bulk excavate surplus material and remove from site	0.13
Pacific Boulevard	0.50
Desilt drainage structure - removal of silt and debris	0.50
Pothole repair <1m2	
Repair road signage	
Penny Road	0.17
Bulk excavate surplus material and remove from site	0.17
Pothole repair <1m2	

Replace guide posts or markers	
Reshape table drain (1 side)	
Perseverance Street	3.36
Asphalt surfacing, <50mm thickness	0.75
Bitumen spray seal, 2-coat	0.47
Reconstruct unbound granular base. Excludes seal	2.14
Pine Street	3.63
Asphalt surfacing, <50mm thickness	1.75
Reconstruct unbound granular pavement. Excludes seal	1.88
Power Road	3.40
Bitumen spray seal, 2-coat	0.05
Bulk fill - imported	0.03
Clear mixed debris and remove from site	0.09
Desilt drainage structure - removal of silt and debris	2.00
Heavy shoulder grading - incorporating 50mm of imported material	0.37
Patch repair - patch local unbound pavement failure (<20m2). Includes 2 coat bitumen seal	0.35
Pothole repair <1m2	
Reconstruct unbound granular base. Excludes seal	0.35
Reinstate line marking	0.10
Replace guide posts or markers	
Rock protection	0.06
Pritchard Road	1.37
Bitumen spray seal, 2-coat	0.17
Reconstruct unbound granular pavement. Excludes seal	1.20
Reshape table drain (1 side)	
Pronger Parade	5.09
Bitumen spray seal, 2-coat	2.74
In-situ stabilisation - including 50mm corrector. Excludes seal	2.00
Patch repair - patch local unbound pavement failure (<20m2). Includes 2 coat bitumen seal	0.35
Purcell Road	0.13
Heavy formation grading incorporating 75mm of imported material	0.13
Reshape table drain (1 side)	
Queen Elizabeth Drive	6.06
Bitumen spray seal, 2-coat	1.14
Bulk fill - imported	0.03
Patch repair - patch local unbound pavement failure (<20m2). Includes 2 coat bitumen seal	1.40
Pothole repair <1m2	
Reconstruct unbound granular pavement. Excludes seal	3.39
Reconstruct unsealed shoulder - repair isolated shoulder failure (<20m2)	0.10
Rafter Road	0.75
Bitumen spray seal, 2-coat	0.05
Pothole repair <1m2	
Reconstruct unbound granular pavement. Excludes seal	0.70
Rafter Road Link	
Pothole repair <1m2	
Rainbow Beach Road	2.73
Asphalt surfacing, <50mm thickness	1.50
Patch repair - patch local unbound pavement failure (<20m2). Includes 2 coat bitumen seal	0.35
Reconstruct unbound granular base. Excludes seal	0.80
Reconstruct unbound granular pavement. Excludes seal	0.08
Rammutt Road	3.85
Bitumen spray seal, 2-coat	0.84
Edge Repair	0.20
In-situ stabilisation - including 50mm corrector. Excludes seal	1.04
Patch repair - patch local unbound pavement failure (<20m2). Includes 2 coat bitumen seal	0.35

Reconstruct unbound granular pavement. Excludes seal	1.12
Reconstruct unsealed shoulder - repair isolated shoulder failure (<20m2)	0.10
Reinstate line marking	0.20
Reshape table drain (1 side)	
Ramsey Road	5.09
Bitumen spray seal, 2-coat	2.64
In-situ stabilisation - including 50mm corrector. Excludes seal	2.05
Reinstate line marking	0.40
Randwick Road	23.46
Bitumen spray seal, 2-coat	6.96
Bulk excavate surplus material and remove from site	0.05
Bulk fill - imported	0.10
Desilt drainage structure - removal of silt and debris	0.25
Edge Repair	0.40
Heavy shoulder grading - incorporating 50mm of imported material	2.69
In-situ stabilisation - including 50mm corrector. Excludes seal	4.05
Patch repair - patch local unbound pavement failure (<20m2). Includes 2 coat bitumen seal	3.50
Pothole repair <1m2	
Reconstruct unbound granular pavement. Excludes seal	1.96
Reconstruct unsealed shoulder - repair isolated shoulder failure (<20m2)	0.40
Reinstate line marking	0.30
Repair stone pitching	0.15
Replace concrete pipe <375mm dia.	1.00
Replace guide posts or markers	
Replace head/end wall <375mm pipe or RCBC	0.50
Replace head/end wall <600mm pipe or RCBC	1.00
Reshape table drain (1 side)	
Rock protection	0.14
Red Hill Road	2.38
Asphalt surfacing, <50mm thickness	0.50
Patch repair - patch local unbound pavement failure (<20m2). Includes 2 coat bitumen seal	0.70
Pothole repair <1m2	
Reconstruct unbound granular base. Excludes seal	0.88
Reinstate line marking	0.30
Reef Street	2.00
Asphalt surfacing, <50mm thickness	1.00
In-situ stabilisation - including 50mm corrector. Excludes seal	1.00
Regan Road	4.82
Bitumen spray seal, 2-coat	2.00
Bulk fill - imported	0.02
Clear mixed debris and remove from site	0.03
Desilt drainage structure - removal of silt and debris	0.25
Heavy shoulder grading - incorporating 50mm of imported material	0.51
In-situ stabilisation - including 50mm corrector. Excludes seal	1.00
Reconstruct unbound granular pavement. Excludes seal	0.76
Reinstate line marking	0.20
Reshape table drain (1 side)	
Rock protection	0.06
River Road	2.52
Asphalt surfacing, <50mm thickness	0.75
Patch repair - patch local unbound pavement failure (<20m2). Includes 2 coat bitumen seal	0.70
Reconstruct unbound granular base. Excludes seal	0.39
Reconstruct unbound granular pavement. Excludes seal	0.69
Rocks Road	0.68
Rock protection	0.68

Saleyard Road	1.06
Bitumen spray seal, 2-coat	0.05
Bulk fill - imported	0.04
Reconstruct unbound granular base. Excludes seal	0.35
Replace head/end wall <375mm pipe or RCBC	0.50
Reshape table drain (1 side)	
Rock protection	0.12
Sandy Creek Road	12.65
Bulk excavate surplus material and remove from site	1.17
Bulk fill - imported	1.48
Clear mixed debris and remove from site	5.50
Reconstruct reinforced concrete	3.00
Replace guide posts or markers	
Replace head/end wall <375mm pipe or RCBC	0.50
Replace head/end wall <600mm pipe or RCBC	1.00
Replace sign (complete) - standard road sign, includes post	
Scotchy Pocket Road	5.27
Bitumen spray seal, 2-coat	1.20
Bulk fill - imported	0.01
Patch repair - patch local unbound pavement failure (<20m ²). Includes 2 coat bitumen seal	0.70
Reconstruct unbound granular pavement. Excludes seal	3.36
Scrub Road	13.29
Bitumen spray seal, 2-coat	0.33
Bulk fill - imported	0.10
Clear mixed debris and remove from site	0.22
Desilt drainage structure - removal of silt and debris	0.75
Edge Repair	0.20
Heavy shoulder grading - incorporating 50mm of imported material	1.23
Patch repair - patch local unbound pavement failure (<20m ²). Includes 2 coat bitumen seal	0.70
Reconstruct unbound granular pavement. Excludes seal	1.40
Reconstruct unsealed shoulder - repair isolated shoulder failure (<20m ²)	0.30
Repair road signage	
Replace concrete pipe <375mm dia.	2.00
Replace concrete pipe <600mm dia.	1.00
Replace guide posts or markers	
Replace head/end wall <375mm pipe or RCBC	1.00
Replace head/end wall <600mm pipe or RCBC	3.00
Replace head/end wall <900mm pipe or RCBC	1.00
Replace sign (complete) - standard road sign, includes post	
Replace sign face only - standard road sign	
Reshape table drain (1 side)	
Rock protection	0.06
Shadbolt Road	13.60
Bitumen spray seal, 2-coat	1.22
Bulk excavate surplus material and remove from site	0.48
Bulk fill - imported	0.98
Clear mixed debris and remove from site	0.17
Desilt drainage structure - removal of silt and debris	1.50
Gravel Resheeting 100mm	3.55
Heavy shoulder grading - incorporating 50mm of imported material	1.73
Reconstruct unbound granular pavement. Excludes seal	3.46
Repair road signage	
Replace guide posts or markers	
Replace sign face only - standard road sign	
Reshape table drain (1 side)	

Rock protection	0.51
Shields Street	1.20
Bitumen spray seal, 2-coat	0.23
Reconstruct unbound granular base. Excludes seal	0.97
Smerdon Road	6.11
Bitumen spray seal, 2-coat	2.35
Heavy shoulder grading - incorporating 50mm of imported material	0.78
In-situ stabilisation - including 50mm corrector. Excludes seal	1.00
Pothole repair <1m2	
Reconstruct unbound granular pavement. Excludes seal	1.98
Sorensen Road	6.42
Asphalt surfacing, <50mm thickness	1.75
Bitumen spray seal, 2-coat	1.59
In-situ stabilisation - including 50mm corrector. Excludes seal	1.23
Patch repair - patch local unbound pavement failure (<20m2). Includes 2 coat bitumen seal	0.35
Reconstruct unbound granular pavement. Excludes seal	1.20
Reconstruct unsealed shoulder - repair isolated shoulder failure (<20m2)	0.10
Reinstate line marking	0.20
Tagigan Road	27.64
Bitumen spray seal, 2-coat	1.79
Bulk excavate surplus material and remove from site	2.30
Bulk fill - imported	2.69
Clear mixed debris and remove from site	0.29
Construct rock mattress	
Desilt drainage structure - removal of silt and debris	5.75
Edge Repair	0.40
Heavy shoulder grading - incorporating 50mm of imported material	4.24
Patch repair - patch local unbound pavement failure (<20m2). Includes 2 coat bitumen seal	0.35
Pothole repair <1m2	
Reconstruct reinforced concrete	1.00
Reconstruct unbound granular pavement. Excludes seal	5.09
Reconstruct unsealed shoulder - repair isolated shoulder failure (<20m2)	0.50
Repair road signage	
Replace concrete pipe <375mm dia.	0.50
Replace guide posts or markers	
Replace head/end wall <375mm pipe or RCBC	2.00
Replace sign (complete) - standard road sign, includes post	
Reshape table drain (1 side)	
Rock protection	0.74
Tamaree Road	1.86
Bitumen spray seal, 2-coat	0.25
Bulk fill - imported	0.07
Edge Repair	0.20
Patch repair - patch local unbound pavement failure (<20m2). Includes 2 coat bitumen seal	0.35
Reconstruct unbound granular pavement. Excludes seal	0.89
Reinstate line marking	0.10
Tandur Road	9.21
Bitumen spray seal, 2-coat	1.22
Desilt drainage structure - removal of silt and debris	0.50
Heavy shoulder grading - incorporating 50mm of imported material	3.84
In-situ stabilisation - including 50mm corrector. Excludes seal	1.73
Patch repair - patch local unbound pavement failure (<20m2). Includes 2 coat bitumen seal	0.35
Pothole repair <1m2	
Reconstruct unbound granular pavement. Excludes seal	1.40
Repair stone pitching	0.15

Reshape table drain (1 side)	
Rock protection	0.02
Tandur Traveston Road	2.27
Bitumen spray seal, 2-coat	0.38
Bulk excavate surplus material and remove from site	0.04
Bulk fill - imported	0.35
Clear mixed debris and remove from site	0.05
In-situ stabilisation - including 50mm corrector. Excludes seal	0.88
Pothole repair <1m2	
Reconstruct unsealed shoulder - repair isolated shoulder failure (<20m2)	0.30
Repair with flowable concrete	0.25
Reshape table drain (1 side)	
Rock protection	0.03
Theebine Road	3.75
Bitumen spray seal, 2-coat	0.67
Bulk fill - imported	0.03
Edge Repair	0.20
In-situ stabilisation - including 50mm corrector. Excludes seal	0.91
Patch repair - patch local unbound pavement failure (<20m2). Includes 2 coat bitumen seal	0.70
Pothole repair <1m2	
Reconstruct unbound granular pavement. Excludes seal	1.00
Reconstruct unsealed shoulder - repair isolated shoulder failure (<20m2)	0.10
Repair stone pitching	0.15
Thomas Road	1.81
Bitumen spray seal, 2-coat	0.10
Bulk fill - imported	0.01
Edge Repair	0.20
Heavy shoulder grading - incorporating 50mm of imported material	1.00
In-situ stabilisation - including 50mm corrector. Excludes seal	0.50
Replace guide posts or markers	
Tozer Street	
Pothole repair <1m2	
Traveston Crossing Road	18.37
Bitumen spray seal, 2-coat	8.76
Bulk fill - imported	0.23
Clear mixed debris and remove from site	0.53
Desilt drainage structure - removal of silt and debris	0.25
In-situ stabilisation - including 50mm corrector. Excludes seal	3.36
Patch repair - patch local unbound pavement failure (<20m2). Includes 2 coat bitumen seal	0.35
Reconstruct unbound granular pavement. Excludes seal	4.90
Replace guide posts or markers	
Reshape table drain (1 side)	
Traveston Road	
Repair road signage	
Tyrrell Road	0.70
Patch repair - patch local unbound pavement failure (<20m2). Includes 2 coat bitumen seal	0.70
Watson Road	2.14
Bitumen spray seal, 2-coat	0.49
In-situ stabilisation - including 50mm corrector. Excludes seal	0.30
Reconstruct unbound granular pavement. Excludes seal	1.14
Reinstate line marking	0.20
Wilsons Pocket Road	6.49
Bitumen spray seal, 2-coat	1.37
Bulk excavate surplus material and remove from site	0.01
Bulk fill - imported	0.25

Clear mixed debris and remove from site	0.17
Heavy shoulder grading - incorporating 50mm of imported material	0.20
In-situ stabilisation - including 50mm corrector. Excludes seal	0.94
Reconstruct unbound granular pavement. Excludes seal	2.04
Replace concrete pipe <375mm dia.	1.00
Replace head/end wall <375mm pipe or RCBC	0.50
Rock protection	0.01
Yabba Creek Road	2.54
Bulk fill - imported	0.20
Clear mixed debris and remove from site	0.38
Edge Repair	0.20
Heavy shoulder grading - incorporating 50mm of imported material	1.31
Patch repair - patch local unbound pavement failure (<20m ²). Includes 2 coat bitumen seal	0.35
Reconstruct unsealed shoulder - repair isolated shoulder failure (<20m ²)	0.10
Young Street	0.83
Asphalt surfacing, <50mm thickness	0.25
Reconstruct unbound granular pavement. Excludes seal	0.48
Reinstate line marking	0.10
Grand Total	656.03

POST CLOSING DATE NOTICE TO RESPONDENTS



Contract Number:	RFT2022-23-021
Contract Name:	2022 DRFA Events Construction Package 02
Respondent Name:	SGQ Pty Ltd
Notice to Respondents No.:	One (1)
Date:	Tuesday, 11/04/2023
Response Due Date and Time:	Thursday, 13/04/2023 at 12:00PM
Response To:	via VendorPanel

Note the following post tender box close clarification(s) request:

1	<p>COUNCIL:</p> <p>Regarding Section 3.3 of your Tender Response, the supplied list of Plant and Equipment is unclear as to which plant is owned by SGQ and which plant will be hired (i.e. both boxes have been ticked). Please provide clarification on this item to assist with Council's evaluation of your Tender Response.</p>
	<p>RESPONSE:</p> <p>SGQ plan to utilise both plant owned by SGQ and hired plant. SGQ own a fleet of excavators, graders, rollers and trucks which we plan to supplement with hired equipment as required to meet the construction program. When the need to hire in plant and equipment arises, SGQ will utilise plant hire companies local to the sites being worked on.</p>

2	<p>COUNCIL:</p> <p>Regarding Section 3.5 of your Tender Response, the Gantt Chart provided does not show delivery of works on a road-by-road basis or the number of crews undertaking the works. Please provide clarification on the delivery of the works to assist with Council's evaluation of your Tender Response.</p> <p>Note that the Tender Evaluation Panel has deemed the current level of information provided in the above sections of your Tender Response as critically deficient and requires significant additional information to be considered a compliant Tender.</p>
---	---



POST CLOSING DATE NOTICE TO RESPONDENTS



RESPONSE:

Due to the very short timeframes provided, we were unable to provide a detailed construction program with our offer or to be included with this response. SGQ are confident that we can deliver the works required in the contract period as we have resources currently available to commence the works.

Our construction program will be structured in a similar way to the detailed construction program that we provided for the DRFA Major Works Package 1 offer, we have attached to this response for reference. Our construction program for this contract would be based on the same overarching methodologies used to develop the Package 1 detailed program as follows;

- Group works into logical geographical groups;
- Undertake roads/treatments prioritised by Council first;&
- Allocate suitable number of crews to undertake the works within the contract period.

Based on the detailed analysis and programming that we were able to undertake for the DRFA Major Works Package 1 tender, we calculated that to deliver \$21M + GST of works over 14 months, we would require 2 main works crews (This equated to \$0.75M/Crew/month). With each work crew lead by a Senior Site Supervisor capable of supervising 2 work faces concurrently, we also planned for a contingency to increase to 4 concurrent work faces if required to meet the program.

Using this same logic, we would plan to deliver this contract using 3 main work crews lead by Senior Site Supervisors with the ability to work on up to 6 concurrent work faces. (\$26.9M/12 months/\$0.75M = 2.98 crews).

COUNCIL:

3

Regarding Section 3.6 of your Tender Response, the Cash Flow provided should correlate with the Gantt Chart provided in Section 3.5 and, as noted above, there is insufficient detail in the originally submitted Gantt Chart to allow this to occur. Please provide clarification on this item to assist with Council's evaluation of your Tender Response.

RESPONSE:

Further to the previous response, SGQ's provided cash flow was based on the %'s of contract value claimed per month that we calculated for the DRFA Major Works Package 1 offer. If



POST CLOSING DATE NOTICE TO RESPONDENTS



successful, our contract cash flow would be based on the detailed construction program developed for this contract.

COUNCIL:

Please provide clarification on your firm's financial capacity to deliver the works required under this contract.

Referring to information provided in your response to RFP0522, this contract represents a very large proportion of your overall stated income from your 2022 income statement and the monthly cash flow projects also account for a large proportion of your available cash and cash equivalents from your 2022 balance sheet.

4 RESPONSE:

SGQ's financial capacity to deliver this contract is sound. SGQ are prequalified to undertake F100 rated projects for TMR (\$100M / financial year) as detailed on the attached TMR prequalification certificate.

Please also note that in addition to the stated income provided previously, SGQ also undertook \$77.9M worth of additional civil construction works with JV partners in the 2022 financial year.

COUNCIL:

Based on the Pricing Schedule submitted, please confirm that the following items are correct as they've been submitted with a tendered amount >50% lower than the median tendered amount:

5

Work Item ID	Work Item Description
20502.01	Erosion and Sediment Control Devices (Non-Itemised)
90512.01	Repair road signage
91015.01	Reconstruct concrete kerb
91020.01	Repair drainage structure - excavate, repair and reinstate
91031.01	Reinstate line marking
92006.01	Bitumen spray seal, 2-coat
12330.01	Pavement Design (RPEQ certified)

POST CLOSING DATE NOTICE TO RESPONDENTS



If a submitted rate is incorrect, please either advise of your intention to withdraw your Tender or accept the submitted rate as correct.

RESPONSE:

SGQ accepts the submitted rates as correct.

COUNCIL:

It is noted your Tender Response is conditional on:

1. We have based our offer on materials, plant and labour being available to complete the works in accordance with our tender program. Accordingly, we require that the contract provides for time (program) and cost relief to SGQ in the event that there is a shortage or unavailability of these resources in the relevant region, to the extent beyond SGQ's control.

Please clarify the following regarding this matter:

- Provide an example of when this condition might be triggered through delivery of this contract and the financial impact it will have on the Principal.

6

RESPONSE:

This qualification has been included due to the unprecedented resource shortages experienced by the industry over the last 18 months. The following steps would be taken should resource shortages be experienced by SGQ during the contract period;

SGQ to formally advise Council of each specific material, plant or labour shortage/delay within 10 business days of becoming aware of each shortage/delay.

SGQ's basis for each claim will be a scenario in which a specific material, plant or labour is not available in accordance with SGQ tender program and that causes SGQ's construction program to be delayed and/or causes SGQ to incur additional costs. SGQ will provide written correspondence from the relevant suppliers/subcontractors for each specific scenario to prove that the dates/timeframes in SGQ's program are no longer achievable.



POST CLOSING DATE NOTICE TO RESPONDENTS



SGQ will prove additional costs incurred for each claim by providing evidence of the actual costs incurred in an open book manner.

SGQ will not claim a mark-up on these costs.

An example of when this condition may be triggered through the delivery of this contract would be if a quarry that was relied upon by SGQ was unable to service this contract.

SGQ commits to working collaboratively with Council to mitigate any impacts of resource shortages.

COUNCIL:

It is noted your Tender Response is conditional on:

2. We require that the contract provides relief and an entitlement for SGQ to claim reimbursement where the cost of subcontractors or suppliers increases between the time of tender and (i) when that package of works is awarded by SGQ (where it is possible to secure fixed pricing) or (ii) at the time of incurring the subcontractor or supplier cost (where it is not possible to secure fixed pricing), This applies to all materials, plant, labour and services and other subcontract costs.

Please clarify the following regarding this matter:

7

- How do you envisage any cost escalations being applied within the Contract (i.e. rise and fall calculation, re-negotiation of individual unit rates, daywork rates, etc.)?

RESPONSE:

This qualification has been included due to the unprecedented increase in construction costs experienced by the industry over the last 18 months. The following steps would be taken should cost increases be experienced by SGQ during the contract period;

SGQ to formally advise Council of each specific subcontractor or supplier cost increase within 10 business days of becoming aware of each cost increase outside of SGQ's control.



POST CLOSING DATE NOTICE TO RESPONDENTS



SGQ's basis for each claim will be a scenario in which a material, plant, labour or service increases between the time of tender and the time of incurring the cost. SGQ will prove each cost increase by providing tender quotations and copies of invoices for costs incurred.

SGQ will prove additional costs incurred for each claim by providing evidence of the actual costs incurred in an open book manner.

SGQ will not claim a mark-up on these costs.

COUNCIL:

It is noted your Tender Response is conditional on:

3. We have allowed to spoil all required material a maximum of 2km from each work face.

Please clarify the following regarding this matter:

- How can the Principal be assured that every effort is made by SGQ to spoil material within the 2km radius before additional costs will be incurred?
- How do you envisage any cost escalations being applied within the Contract (i.e. rise and fall calculation, re-negotiation of individual unit rates, daywork rates, etc.)?

8 RESPONSE:

SGQ commit to exhausting all potential spoil locations within 2km of site well in advance of mobilising to each individual site. In our experience, we have been able to successfully manage this process by taking the following steps;

1. Advertise material availability per location.
2. Inspect and approve/deny each potential spoil location;
3. Maintain detailed records of materials types/volumes and spoil locations.

Due to one rate for each activity applying to each site, it would be difficult to vary contract rates to cater for any increased cost in this scenario. The simplest and fairest way to value any increased cost that may apply in this scenario would be to simply agree on the additional trucking time required and multiply it by the applicable dayworks rate.



POST CLOSING DATE NOTICE TO RESPONDENTS



9	<p>COUNCIL:</p> <p>It is noted your Tender Response is conditional on:</p> <p>7. SGQ will endeavour to install the treatments at the widths nominated in the design. In scenarios where an increased width is required to be installed due to available equipment, the actual quantity completed on site shall be claimable by SGQ.</p> <p>Please clarify the following regarding this matter:</p> <ul style="list-style-type: none"> Provide an example of when this condition might be triggered through delivery of this contract and the financial impact it will have on the Principal.
	<p>RESPONSE:</p> <p>An example of this scenario may be that a 2.3m wide section of pavement was specified for insitu-stabilisation and the available stabilizer was 2.4m wide. The increase in cost in this scenario would be the scheduled rate for the works multiplied by the additional area treated (0.1m x length of treatment).</p> <p>To avoid this scenario, SGQ would endeavour to work with Council to modify any specified treatments to suit the standard working widths of civil construction equipment. EG It may be more cost effective to remove and replace a narrow strip of pavement than to insitu-stabilise it to a standard width which is wider than what is required.</p>

10	<p>COUNCIL:</p> <p>It is noted your Tender Response is conditional on:</p> <p>10. We have allowed to supply the material required for work item '92007 Plant-Mixed Lightly Bound Base. Excludes Seal' in accordance with MRTS08, not MRTS10. We require the working times to be relaxed to enable placement of this material at the required locations. This work item can only be ordered by GRC for locations less than 80km from Boral's Moy Pocket quarry.</p> <p>Please clarify the following regarding this matter:</p>
----	--

POST CLOSING DATE NOTICE TO RESPONDENTS



	<ul style="list-style-type: none"> Why is MRTS08 preferred over MRTS10? MRTS08 pavements constructed at base course level are more likely to produce reflective cracking in the wearing surface. Does the proposed methodology account for this (i.e. use of PMB seals, etc.)?
	<p>RESPONSE:</p> <p>The tender documents referenced both MRTS08 and MRTS10. As such, SGQ allowed for MRTS08 as it provided the most value to Council. We have not allowed for PMB seals.</p>

	<p>COUNCIL:</p> <p>It is noted your Tender Response is conditional on:</p> <p>14. We require an extension of time with costs to be claimable for any increase in scope or Principal caused delay.</p> <p>Please clarify the following regarding this matter:</p>
11	<ul style="list-style-type: none"> What is the definition of "increase in scope" in this condition?
	<p>RESPONSE:</p> <p>The definition of 'increase in scope' in this condition is as follows;</p> <p>Any increase in the scope of works that cause SGQ's individual construction crews to be on site for a longer time period.</p>

Respondent:	SGQ Pty Ltd
Respondent ABN/ACN:	18 146 949 706
Authorised Representative:	Callan Stephens



POST CLOSING DATE NOTICE TO RESPONDENTS



Signature:	
Date:	13/04/023

Certificate of Prequalification

Austrroads' National Prequalification System for Civil (Road and Bridge) Construction Contracts

This is to certify that

SGQ Pty Ltd

ABN: 18 146 949 706

is prequalified with the Department of Transport and Main Roads at

Roadworks Level	R4
Bridgeworks Level	B3
Financial Level	F100
Prequalification Status	FULL



Secretary of the Prequalification Committee

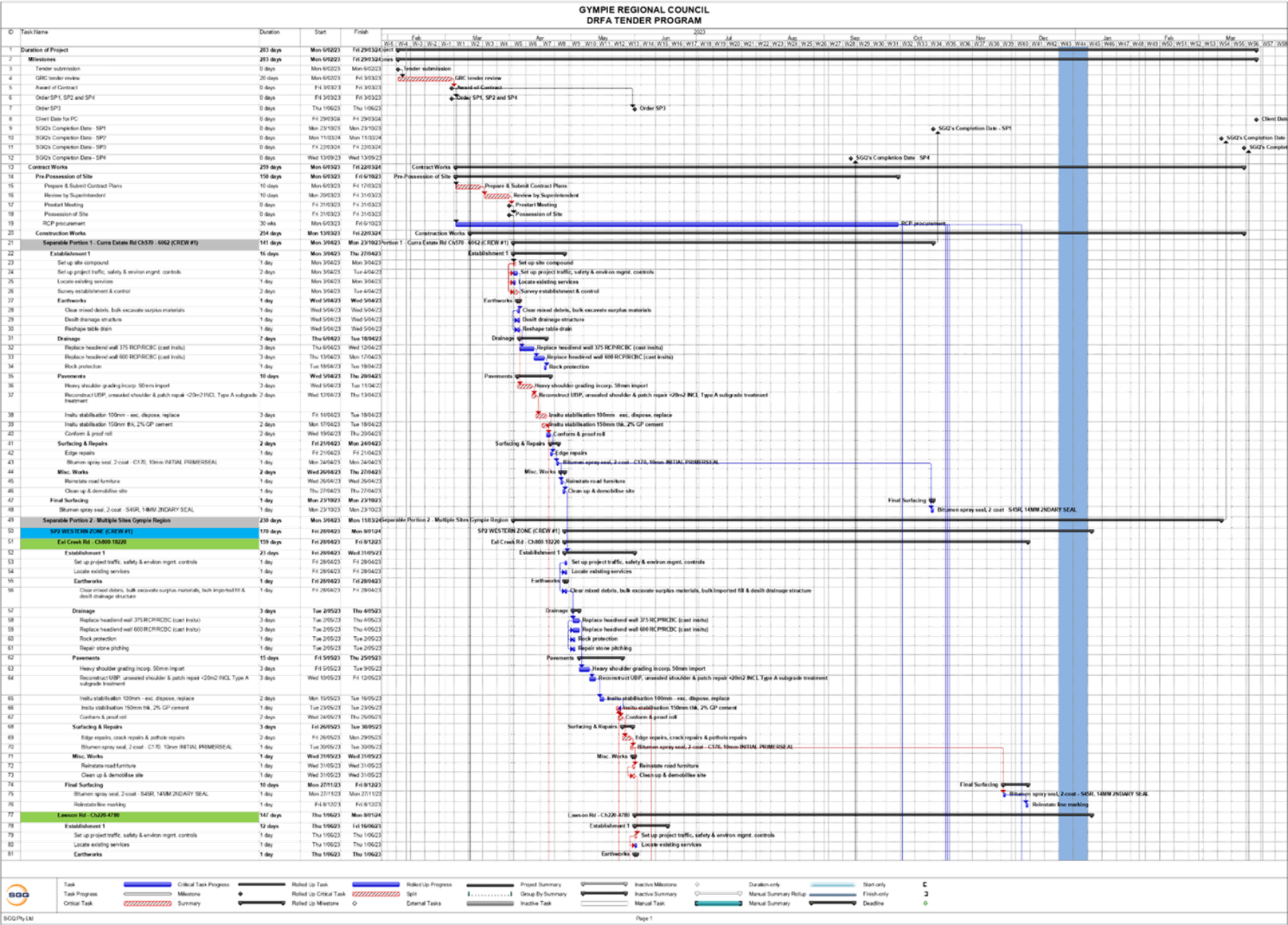
To confirm the validity of the registration for this certificate please visit www.tmr.qld.gov.au

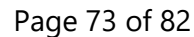
Certificate Number: **Q21143**

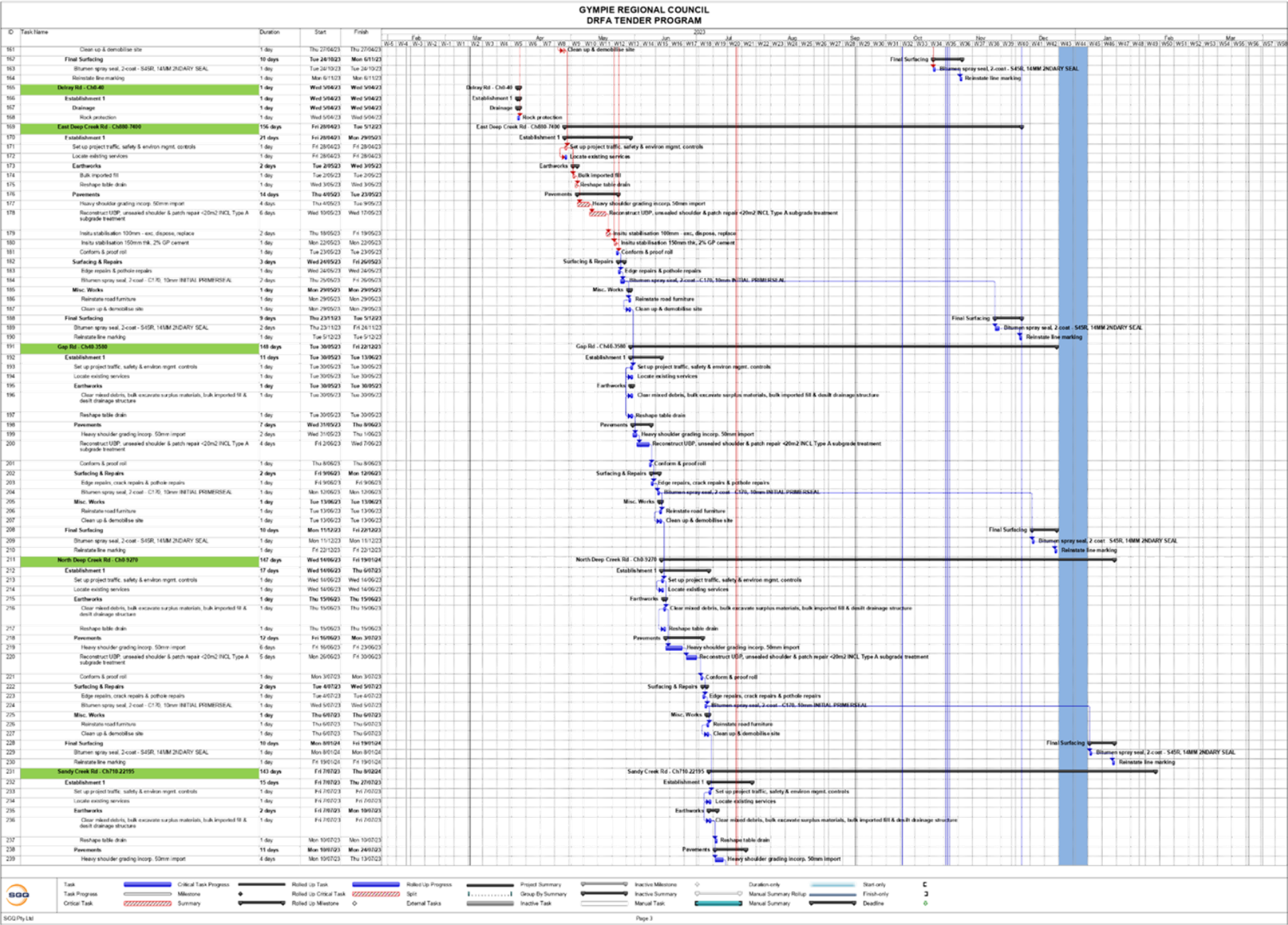
Assessing Authority: QLD-TMR

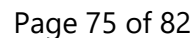
Issue Date 27 October 2021

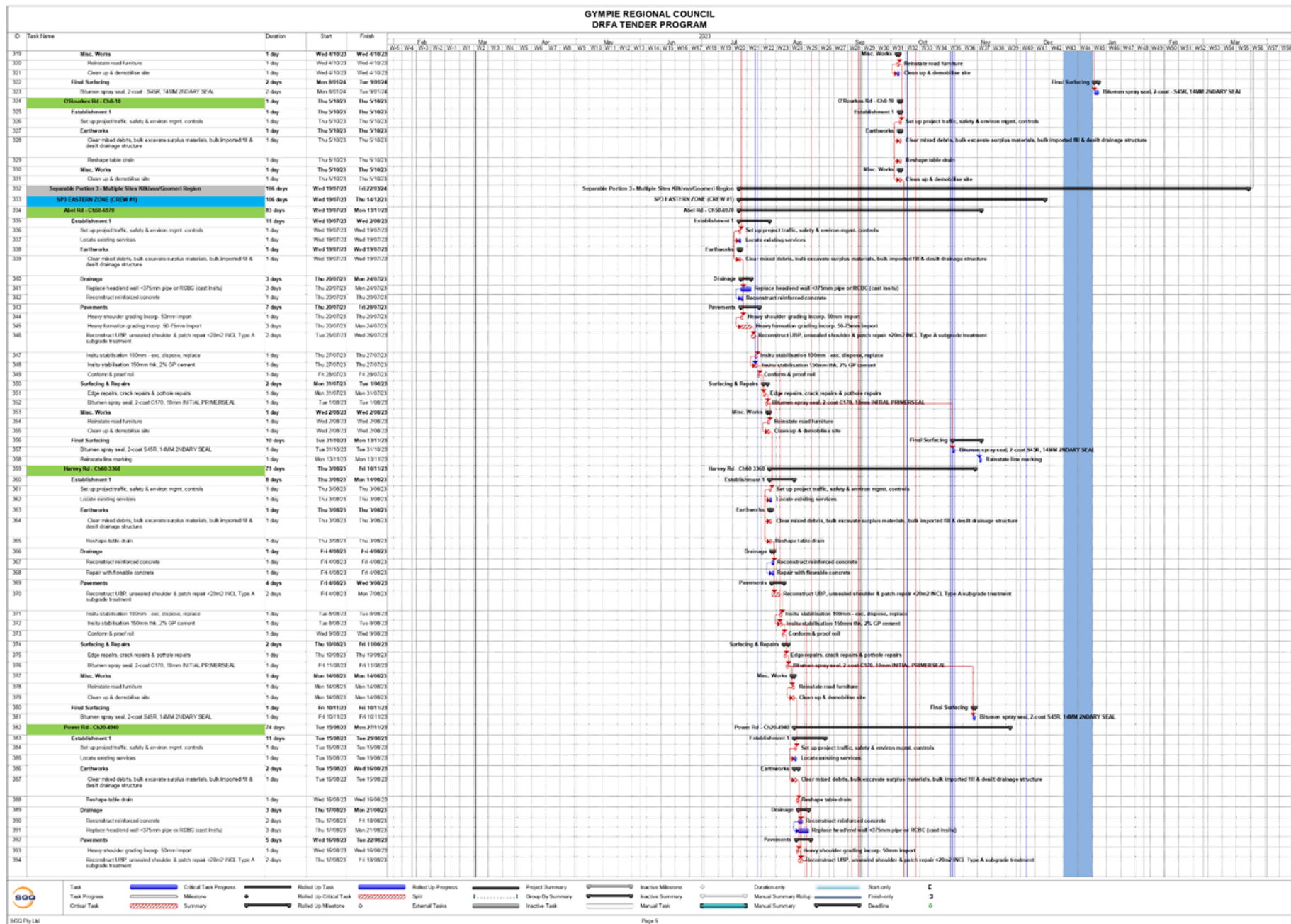
Expiry Date: 31 October 2024

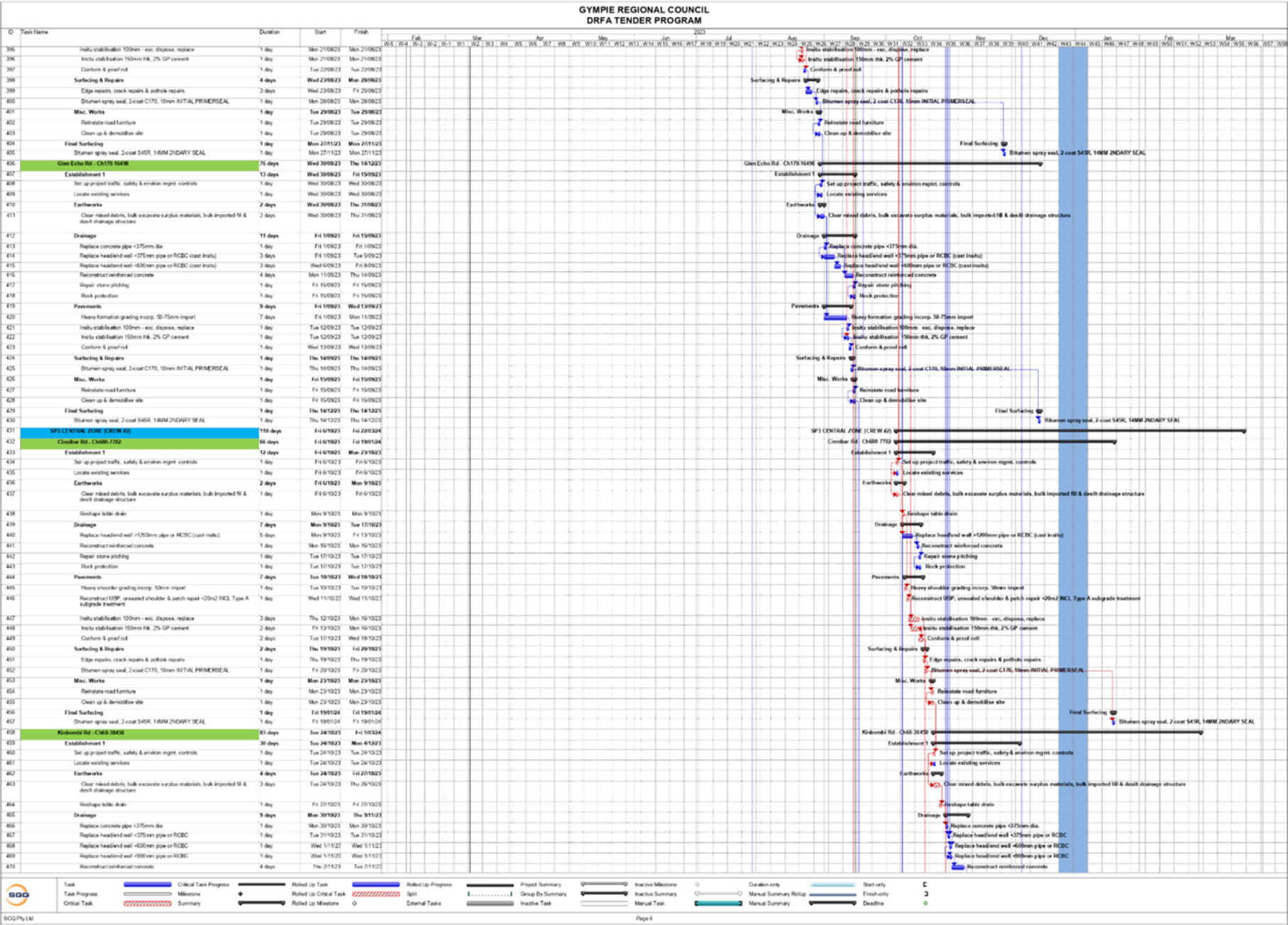


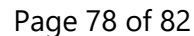


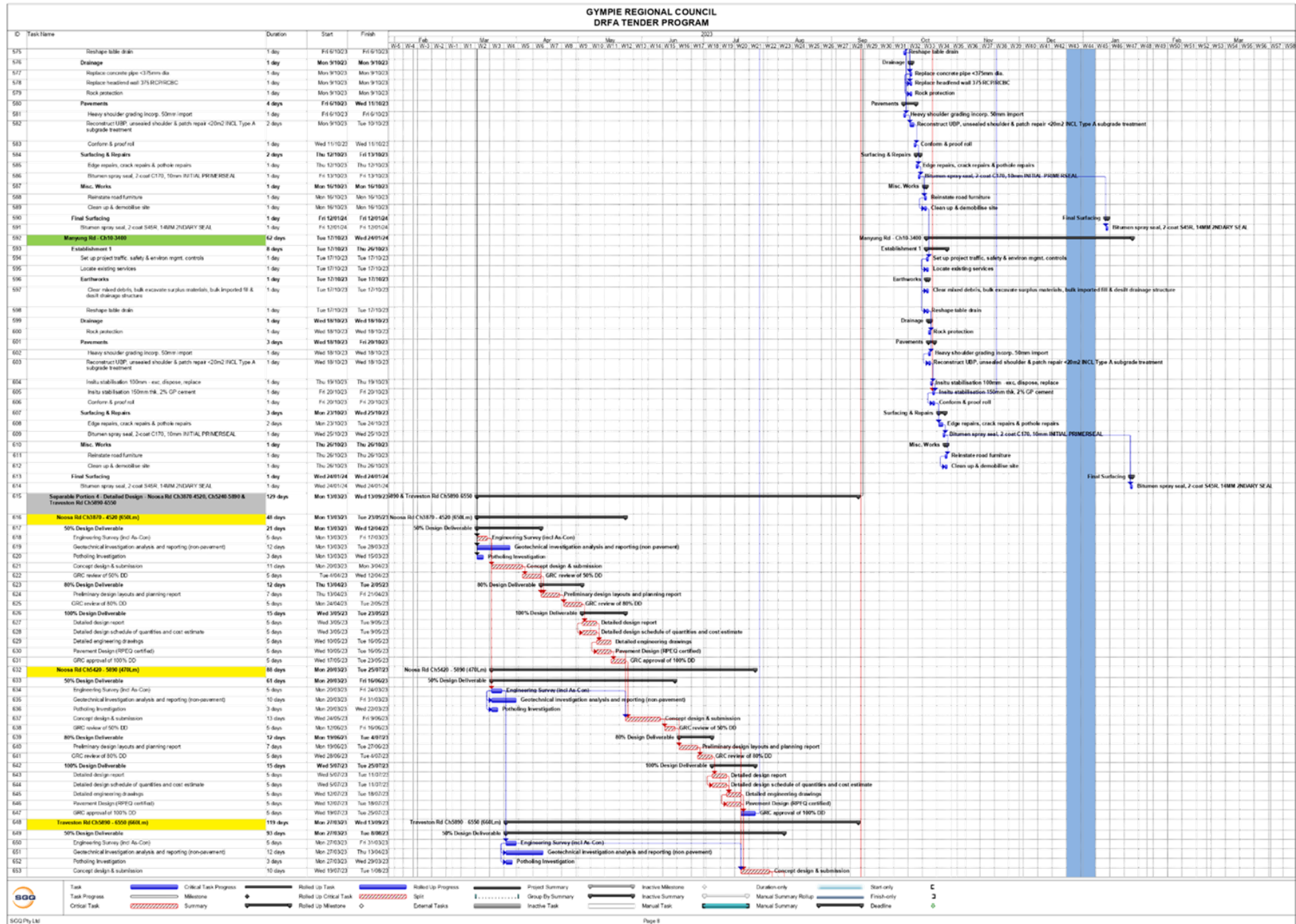


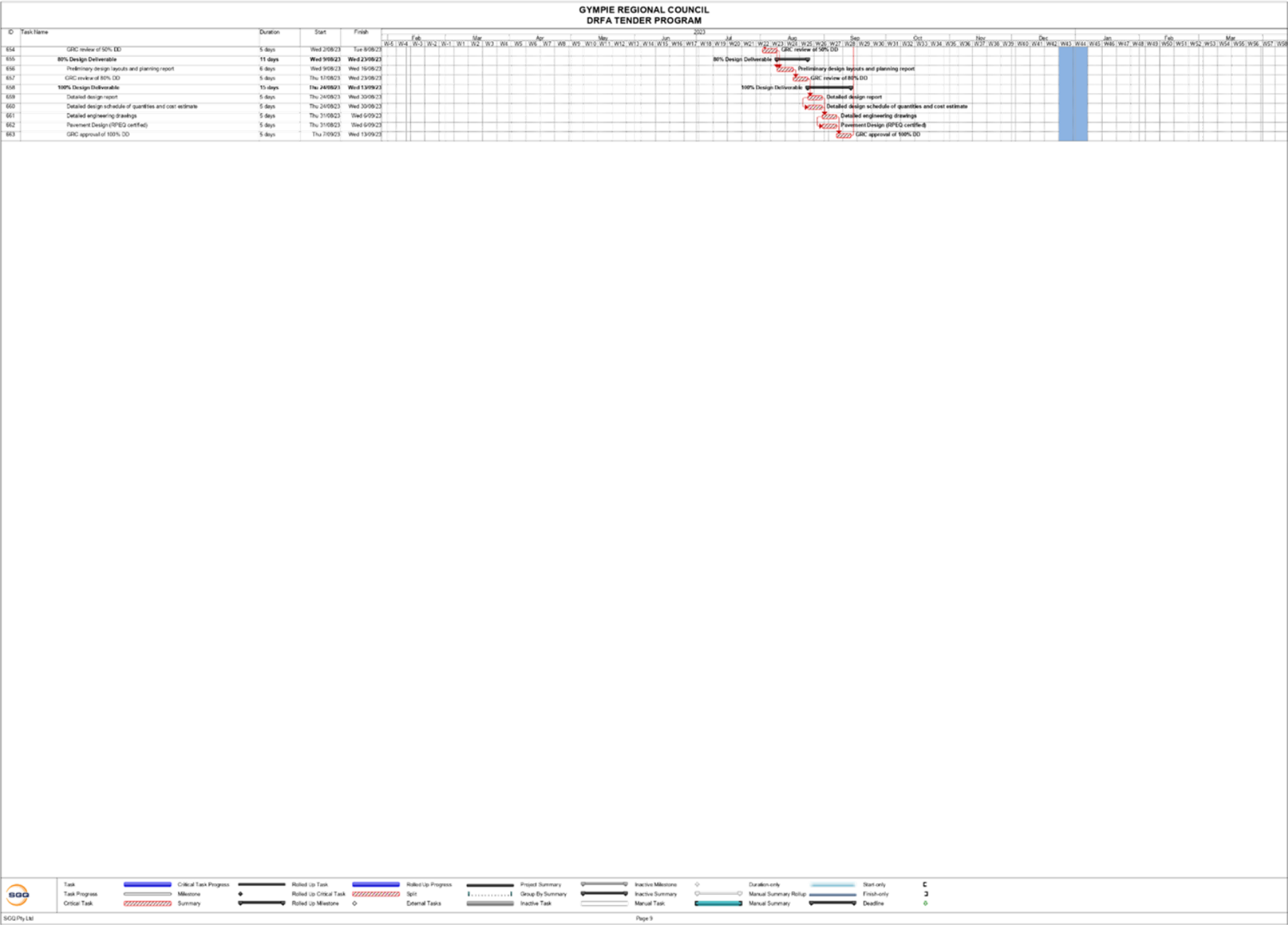















Appendix B. Evaluation Table

Final Evaluation

 Weighted Attribute Evaluation Spreadsheet - Final Evaluation

Contract Title:	RFQ2022-23 016- 2022 DRFA Events Construction Package 01	Median Price After Corrections	\$35,993,531.89
Contract No:	RFQ2022-23 016	Total Number of Conforming & Alternative Responses	2

Non-Conforming Tenders	Yes (2)	Names of Non-Conforming Tenders	Durack Civil Pt; SGQ Pt
------------------------	---------	---------------------------------	-------------------------

Conforming and Alternate Tenders Only	1	2	3	4	5	6	7	8	9	10
Name of Tenderer (Respondent) as per Respondent Details ABN	DURACK CIVIL PTY LTD	SGQ Pty Ltd								
ABN	35 633 665 380	18 146 949 706								
Date of Submission	13-Feb-23	13-Feb-23								
Business Registered Address (City/State Only)	Trinity Beach QLD	Warana QLD								
Seperable Portion 1 Construction Sub-Total (ex GST)	\$34,859,207.77	\$36,033,928.00								
Price Ranking	1	2								
Seperable Portion 2 -Construction Sub-Total (ex GST)	\$575,203.00	\$518,725.00								
Price Ranking	2	1								
Corrections/Clarifications (Excl GST)										
Conforming or Alternate	Alternate	Alternate								
Alternate Price Adjustments (Excl GST)										
Price (Excl GST) After Corrections / Clarifications (Incl's Alternate)	\$35,434,410.77	\$36,552,653.00								
Price Variance % from Lowest Price	0.0%	-3.2%								
Price Ranking	1	2								
Price Variance from Median	-\$559,121.12	\$559,121.11								
Price Variance % from Median	50.0%	-2%								
Shortlist (Y/N)	Yes	Yes								


Part A - Non Price Elements	DURACK CIVIL PTY LTD	SGQ Pty Ltd								
Total Non Price Weighted Score	0.0%	5.66	4.67							

Part B - Price Element	DURACK CIVIL PTY LTD	SGQ Pty Ltd								
Total Price/Fees (Pc)	100.0%	\$35,434,410.77	\$36,552,653.00							

Price Calculation derived from the 'Local benefits test' produced by 'Office of the Chief Advisor - Procurement' & as utilised in VendorPanel (Evaluation Matrix) <http://www.how.qld.gov.au/SiteCollectionDocuments/LocalBenefitsTest.pdf>

Weighted Price Score	10.00	9.69								
Total Score of price and non price elements	15.66	14.36								
Ranking	1	2								

Assessment Panel	Position Title
Contract Administrator & Assessment Panel Member 1	Manager - Capital Delivery & Assets (LW)
Assessment Panel Member 2	CRC Program Manager (RMCC)
Assessment Panel Member 3	CRC Construction Manager (SR)
Assessment Panel Member 4	
Assessment Panel Member 5	

Signature	
Contract Administrator	Manager - Capital Delivery & Assets (LW)
Date	Tuesday, 25 April 2023