

Gympie Regional Council Corporate Plan Snapshot 2022-2027

Vision

To celebrate strong communities, embrace opportunities and promote wellbeing.



Strong Communities
Our diverse communities are connected and supported.



Opportunities
To attract and retain industry in a balanced and sustainable way.



Wellbeing
To create spaces for living, working and learning, and support environments that nurture creativity and promote wellbeing.

Mission

To leave a positive legacy for future generations by embracing progress through good planning and efficient service delivery.

Values

Accountability:

We will be open, transparent and take responsibility for our actions.

Communication:

We will keep people informed, consult with the community and actively listen to and respond to their input.

Customer Service Focused:

We meet the needs of our community in an efficient and effective manner. We strive to continually improve, show empathy and are environmentally aware in our service delivery.

Integrity:

We will act with honesty and respect in all that we do.

Teamwork and Collaboration:

We recognise and support everyone's contributions. We are inclusive and contribute respectfully to team efforts. We will care for ourselves and others.

Community and Environment



Our region is the meeting place between town and country, bush and beach. Our community is inclusive, celebrates diversity, values development of its residents, and maintains care for one another and our surrounds.

- Encourage and enhance communication with all stakeholders.
- Partner with cultural, environmental and other community groups, including volunteering support.
- Provide inclusive cultural and community infrastructure that meets the needs of a growing population.
- Conserve and enhance the environment in the planning scheme, major developments and council projects. This includes considering biodiversity and sustainability.
- Encourage active recreation in the region.
- Advocate to the state and federal governments for improved infrastructure.

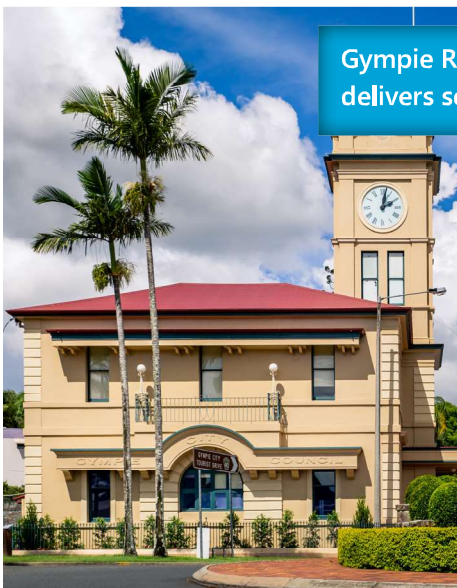
Infrastructure and Economic Opportunity



Our planning and infrastructure seeks to meet foreseeable future needs to support economic development, community enhancement and residents' well-being.

- Develop, implement and regularly revise asset management plans.
- Develop clearly defined service standards.
- Facilitate integration of land use and infrastructure planning to meet future needs and diverse population and economic growth.
- Ensure reliable and safe infrastructure, including transport, water supply and waste disposal.
- Deliver capital works programs effectively and efficiently.
- Support industry development, assist in developing economic resilience and advocate for economic opportunities including tourism and recreation.

Organisation



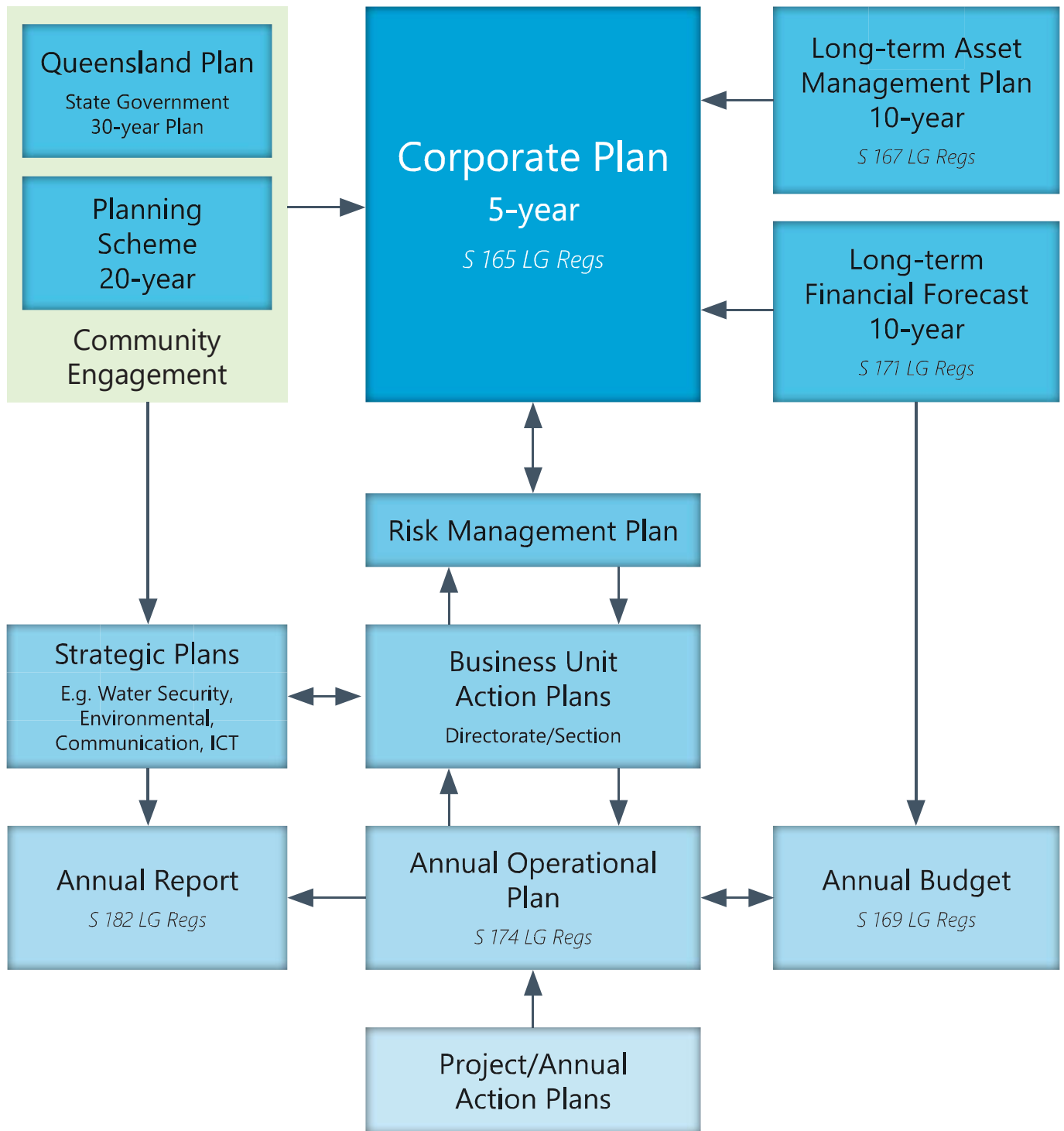
Gympie Regional Council is an organisation that understands the community, and delivers services efficiently and effectively through highly engaged staff.

- An organisation that is transparent and accountable in its evidence-based planning, decision making and reporting.
- Support a motivated and effective workforce continually improving in a positive work environment.
- Provide strong financial management, value for money services and budgets are delivered.
- Ensure our department workgroups coordinate to meet community needs.
- Ensure systems and operations are in place to respond to natural disasters and emergent community needs.
- Provide support and service the community through listening, leadership and responding to the community.



Direction of Council

The Corporate Plan is the cornerstone of what we do for the next five years. The below diagram shows how Council's plans work together to achieve its Vision.



LG Regs – Local Government Regulation 2012

