



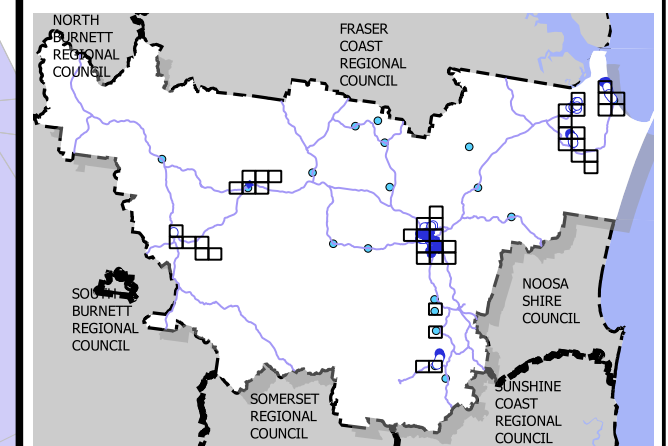
Gympie Regional Council Plans for Trunk Infrastructure

ARALUEN

- Existing Sewer Line
- Pressure Main
- Gravity Main
- Sewer Pump Station
- Sewage Treatment Plant
- Existing Sewer Access Chamber
- Future STP Upgrade
- Future Sewer Pump Station
- Future Sewer Line**
- Rising Main
- Trunk Sewer
- State Road Network
- Sewer Service Catchment**
- Gympie

Disclaimer
While every care is taken to ensure the accuracy of this map, Gympie Regional Council makes no representations or warranties about its accuracy, reliability, completeness or suitability for any particular purpose and disclaims all responsibility and all liability (including without limitation, liability in negligence) for all expenses, losses, damage (including indirect or consequential damage) and costs which might incur as a result of the data being inaccurate or incomplete in any way and for any reason.
© Copyright Gympie Regional Council 2016
Cadastral Disclaimer:
Despite Department of Environment and Resource Management (DERM)'s best efforts, DERM makes no representations or warranties in relation to the information, and, to the extent permitted by law, exclude or limit all warranties relating to correctness, accuracy, reliability, completeness or currency and all liability for any direct, indirect and consequential costs, losses, damages and expenses incurred in any way (including but not limited to that arising from negligence) in connection with any use of or reliance on the information.
© The State of Queensland (Dept of Environment and Resource Management (DERM)) 2016.
Map Grid of Australia (MGA) Zone 56 Geodetic Datum of Australia (GDA) 1994

N
Scale 1:10000 1cm = 100m (on A3 print)
0 100 200 300 400 m



Trunk Sewer

Map: PFTI-SEW-6

Version 3 Date: 15-03-2021



Gympie Regional Council Plans for Trunk Infrastructure

ARALUEN

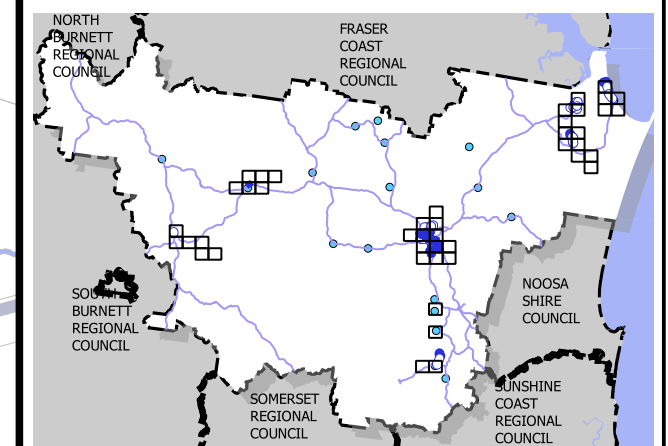
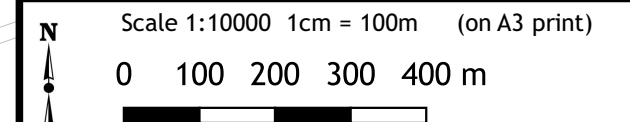
- Existing Sewer Line
 - Pressure Main
 - Gravity Main
- Sewer Pump Station
- Sewage Treatment Plant
- Existing Sewer Access Chamber
- Future STP Upgrade
- Future Sewer Pump Station
- Future Sewer Line
 - Rising Main
 - Trunk Sewer
- State Road Network
- Sewer Service Catchment
 - Gympie

Disclaimer
While every care is taken to ensure the accuracy of this map, Gympie Regional Council makes no representations or warranties about its accuracy, reliability, completeness or suitability for any particular purpose and disclaims all responsibility and all liability (including without limitation, liability in negligence) for all expenses, losses, damage (including indirect or consequential damage) and costs which might incur as a result of the data being inaccurate or incomplete in any way and for any reason.

© Copyright Gympie Regional Council 2016

Cadastral Disclaimer:
Despite Department of Environment and Resource Management (DERM)'s best efforts, DERM makes no representations or warranties in relation to the information, and, to the extent permitted by law, exclude or limit all warranties relating to correctness, accuracy, reliability, completeness or currency and all liability for any direct, indirect and consequential costs, losses, damages and expenses incurred in any way (including but not limited to that arising from negligence) in connection with any use of or reliance on the information.

© The State of Queensland (Dept of Environment and Resource Management (DERM)) 2016.
Map Grid of Australia (MGA) Zone 56 Geodetic Datum of Australia (GDA) 1994



Trunk Sewer

Map: PFTI-SEW-7

Version 3 Date: 15-03-2021



Gympie Regional Council Plans for Trunk Infrastructure

GYMPIE

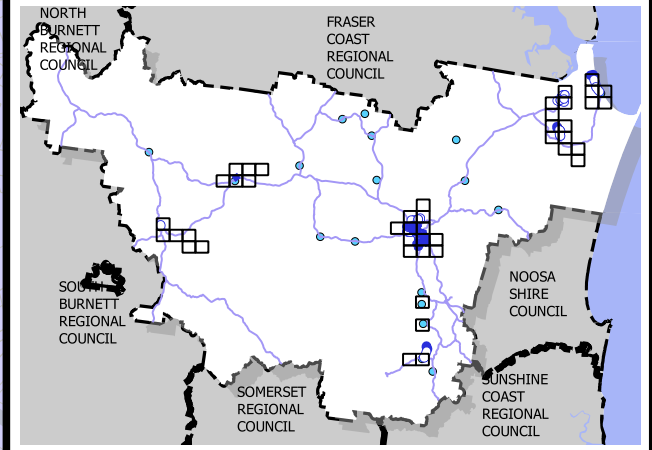
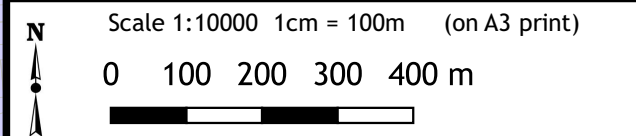
- Existing Sewer Line
 - Pressure Main
 - Gravity Main
 - Sewer Pump Station
 - Sewage Treatment Plant
 - Existing Sewer Access Chamber
- Future Sewer Line
 - Rising Main
 - Trunk Sewer
 - Future STP Upgrade
 - Future Sewer Pump Station
- State Road Network
- Sewer Service Catchment
 - Gympie

Disclaimer
While every care is taken to ensure the accuracy of this map, Gympie Regional Council makes no representations or warranties about its accuracy, reliability, completeness or suitability for any particular purpose and disclaims all responsibility and all liability (including without limitation, liability in negligence) for all expenses, losses, damage (including indirect or consequential damage) and costs which might incur as a result of the data being inaccurate or incomplete in any way and for any reason.

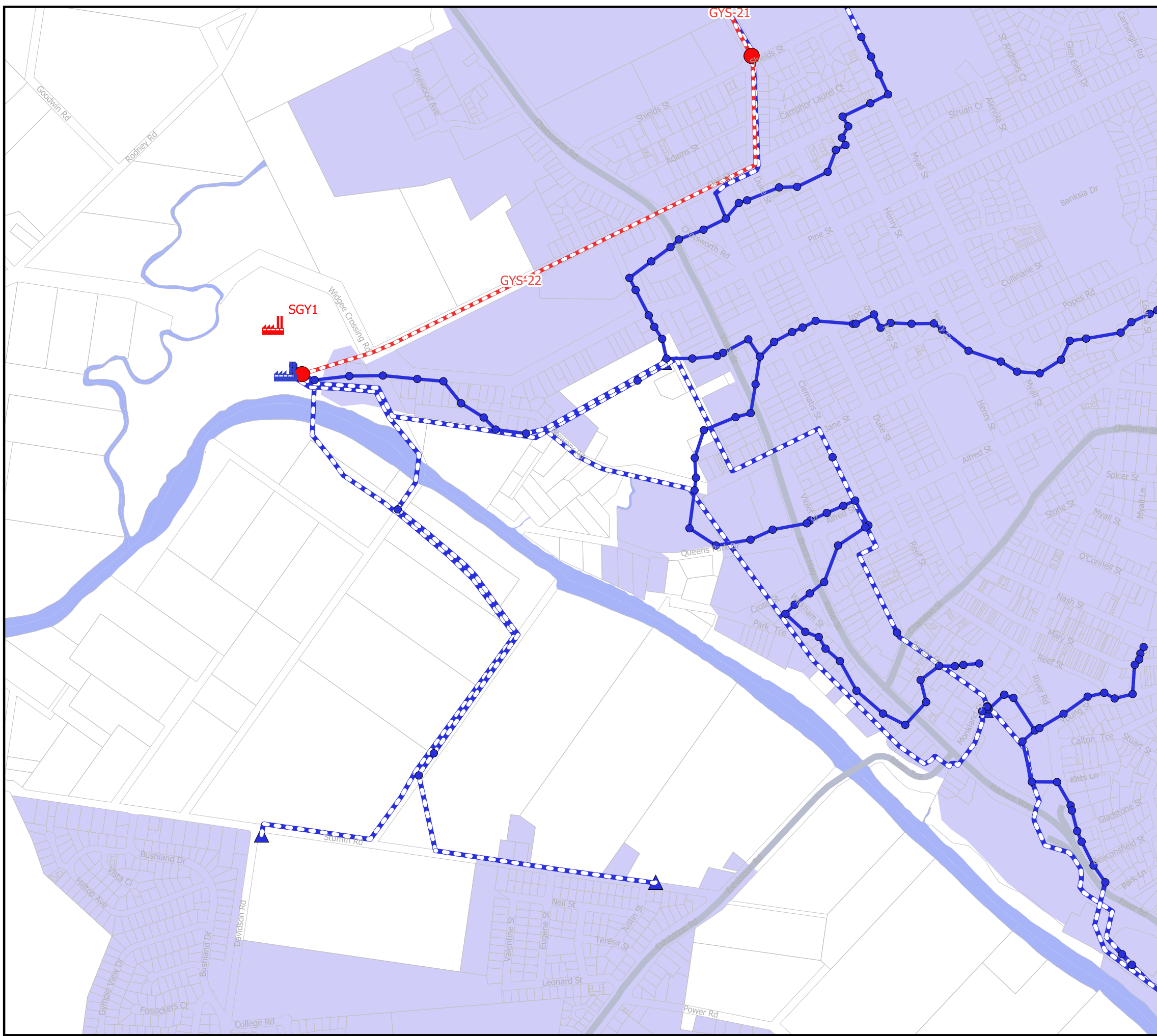
© Copyright Gympie Regional Council 2016

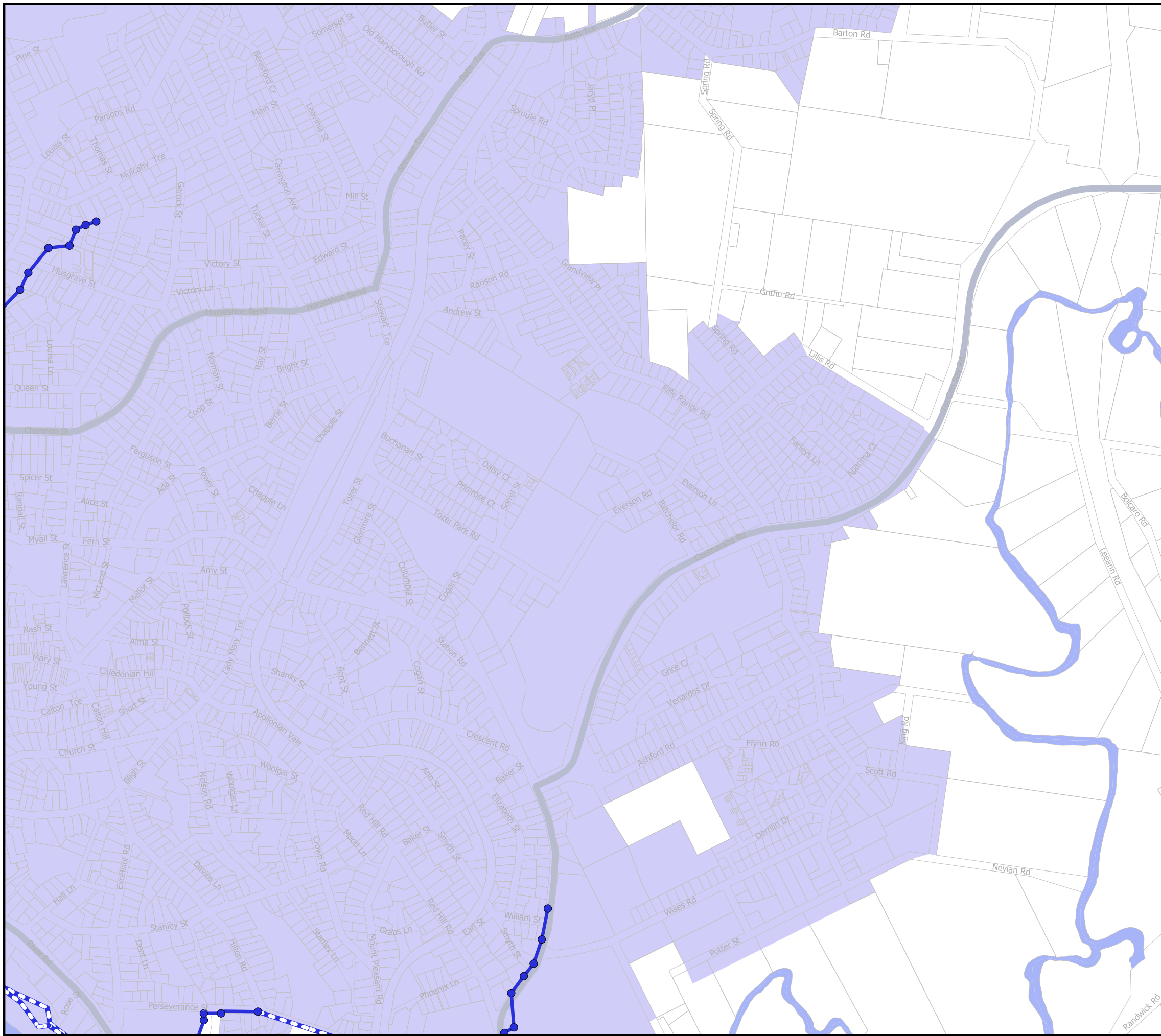
Cadastral Disclaimer:
Despite Department of Environment and Resource Management (DERM)'s best efforts, DERM makes no representations or warranties in relation to the information, and, to the extent permitted by law, exclude or limit all warranties relating to correctness, accuracy, reliability, completeness or currency and all liability for any direct, indirect and consequential costs, losses, damages and expenses incurred in any way (including but not limited to that arising from negligence) in connection with any use of or reliance on the information.

© The State of Queensland (Dept of Environment and Resource Management (DERM)) 2016.
Map Grid of Australia (MGA) Zone 56 Geodetic Datum of Australia (GDA) 1994



Trunk Sewer
Map: PFTI-SEW-10
Version 3 Date: 15-03-2021





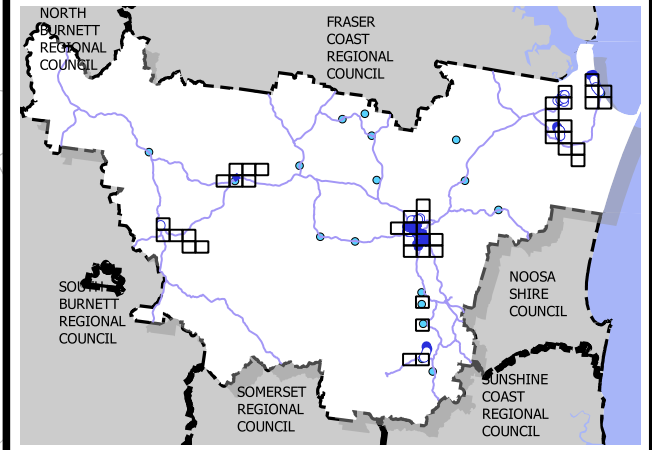
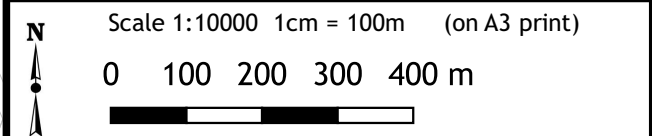
Gympie Regional Council
Plans for Trunk Infrastructure

GYMPIE

- Existing Sewer Line
- Pressure Main
- Gravity Main
- Sewer Pump Station
- Sewage Treatment Plant
- Existing Sewer Access Chamber
- Future STP Upgrade
- Future Sewer Pump Station
- Future Sewer Line**
- Rising Main
- Trunk Sewer
- State Road Network
- Sewer Service Catchment**
- Gympie

Disclaimer
While every care is taken to ensure the accuracy of this map, Gympie Regional Council makes no representations or warranties about its accuracy, reliability, completeness or suitability for any particular purpose and disclaims all responsibility and all liability (including without limitation, liability in negligence) for all expenses, losses, damage (including indirect or consequential damage) and costs which might incur as a result of the data being inaccurate or incomplete in any way and for any reason.
© Copyright Gympie Regional Council 2016

Cadastral Disclaimer:
Despite Department of Environment and Resource Management (DERM)'s best efforts, DERM makes no representations or warranties in relation to the information, and, to the extent permitted by law, exclude or limit all warranties relating to correctness, accuracy, reliability, completeness or currency and all liability for any direct, indirect and consequential costs, losses, damages and expenses incurred in any way (including but not limited to that arising from negligence) in connection with any use of or reliance on the information.
© The State of Queensland (Dept of Environment and Resource Management (DERM)) 2016.
Map Grid of Australia (MGA) Zone 56 Geodetic Datum of Australia (GDA) 1994



Trunk Sewer
Map: PFTI-SEW-11
Version 3 Date: 15-03-2021



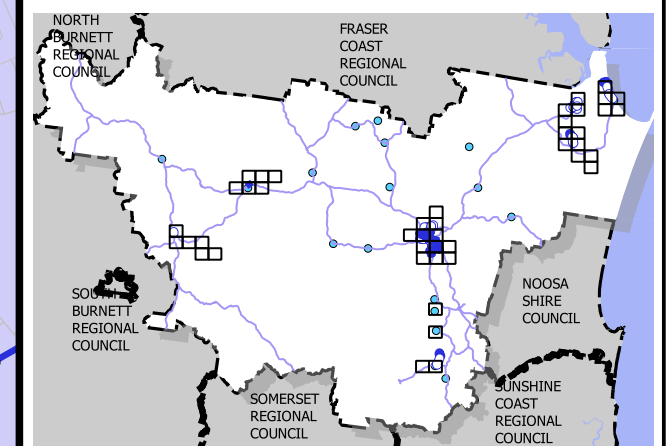
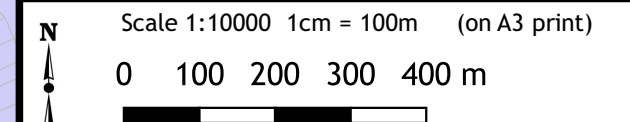
Gympie Regional Council Plans for Trunk Infrastructure

SOUTHSIDE

- Existing Sewer Line
- Pressure Main
- Gravity Main
- Sewer Pump Station
- Sewage Treatment Plant
- Existing Sewer Access Chamber
- Future STP Upgrade
- Future Sewer Pump Station
- Future Sewer Line**
- Rising Main
- Trunk Sewer
- State Road Network
- Sewer Service Catchment**
- Gympie

Disclaimer
While every care is taken to ensure the accuracy of this map, Gympie Regional Council makes no representations or warranties about its accuracy, reliability, completeness or suitability for any particular purpose and disclaims all responsibility and all liability (including without limitation, liability in negligence) for all expenses, losses, damage (including indirect or consequential damage) and costs which might incur as a result of the data being inaccurate or incomplete in any way and for any reason.
© Copyright Gympie Regional Council 2016

Cadastral Disclaimer:
Despite Department of Environment and Resource Management (DERM)'s best efforts, DERM makes no representations or warranties in relation to the information, and, to the extent permitted by law, exclude or limit all warranties relating to correctness, accuracy, reliability, completeness or currency and all liability for any direct, indirect and consequential costs, losses, damages and expenses incurred in any way (including but not limited to that arising from negligence) in connection with any use of or reliance on the information.
© The State of Queensland (Dept of Environment and Resource Management (DERM)) 2016.
Map Grid of Australia (MGA) Zone 56 Geodetic Datum of Australia (GDA) 1994



Trunk Sewer
Map: PFTI-SEW-12
Version 3 Date: 15-03-2021



Gympie Regional Council Plans for Trunk Infrastructure

MONKLAND

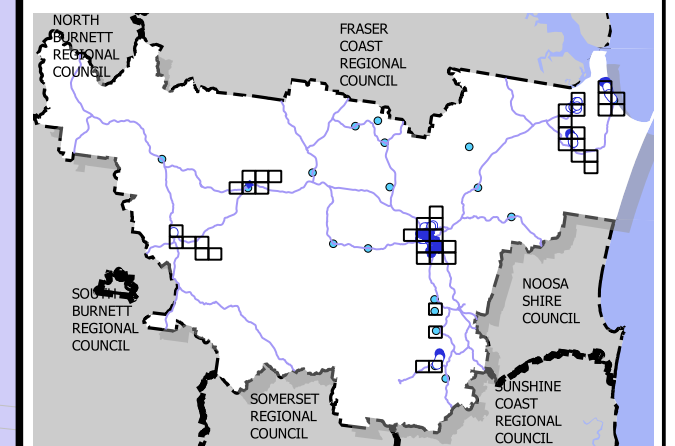
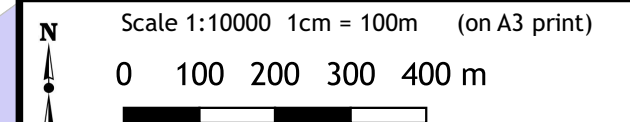
- Existing Sewer Line
 - Pressure Main
 - Gravity Main
 - Sewer Pump Station
 - Sewage Treatment Plant
 - Existing Sewer Access Chamber
- Future Sewer Line
 - Rising Main
 - Trunk Sewer
- Future STP Upgrade
- Future Sewer Pump Station
- State Road Network
- Sewer Service Catchment
Gympie

Disclaimer
While every care is taken to ensure the accuracy of this map, Gympie Regional Council makes no representations or warranties about its accuracy, reliability, completeness or suitability for any particular purpose and disclaims all responsibility and all liability (including without limitation, liability in negligence) for all expenses, losses, damage (including indirect or consequential damage) and costs which might incur as a result of the data being inaccurate or incomplete in any way and for any reason.

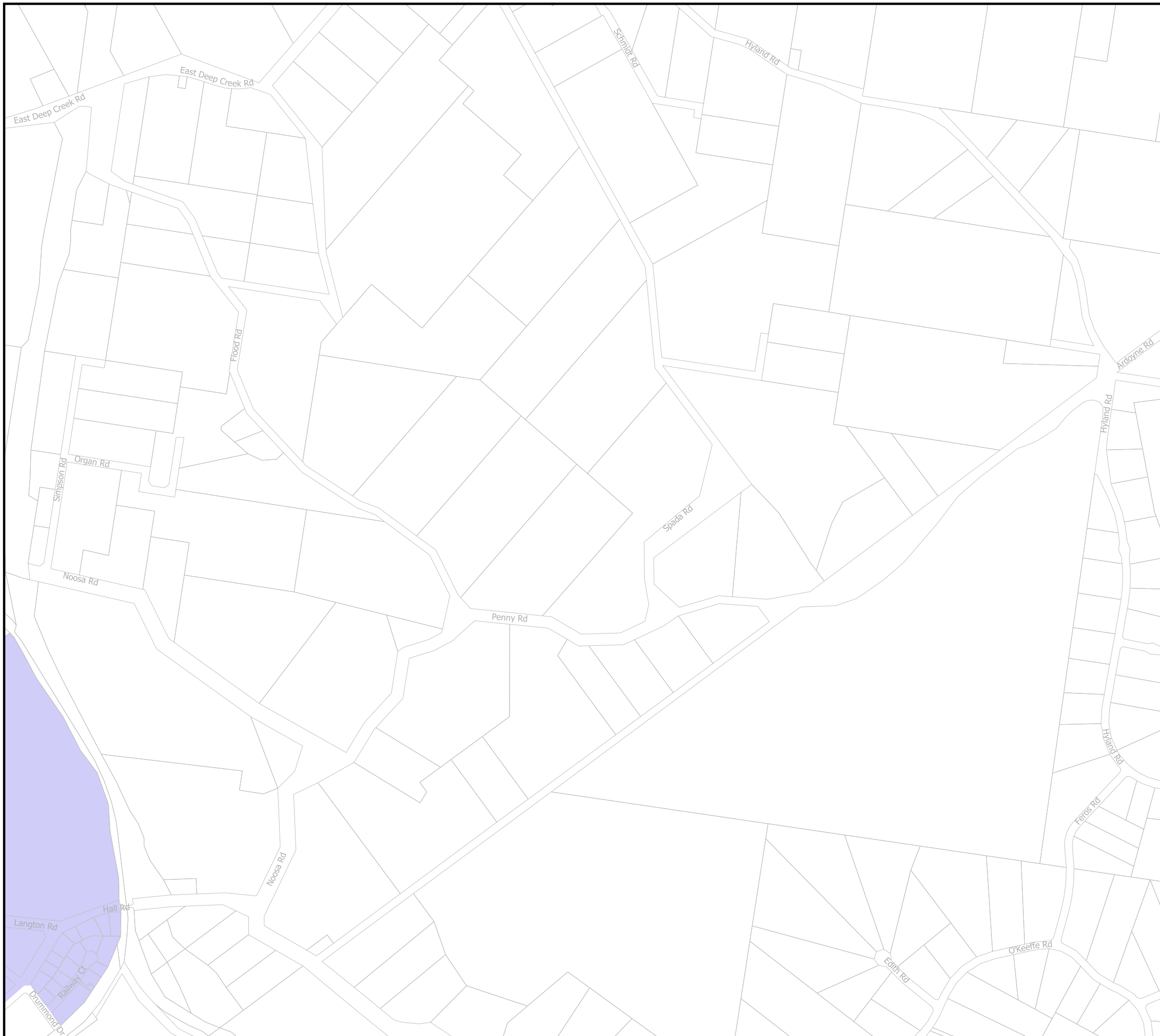
© Copyright Gympie Regional Council 2016

Cadastral Disclaimer:
Despite Department of Environment and Resource Management (DERM)'s best efforts, DERM makes no representations or warranties in relation to the information, and, to the extent permitted by law, exclude or limit all warranties relating to correctness, accuracy, reliability, completeness or currency and all liability for any direct, indirect and consequential costs, losses, damages and expenses incurred in any way (including but not limited to that arising from negligence) in connection with any use of or reliance on the information.

© The State of Queensland (Dept of Environment and Resource Management (DERM)) 2016.
Map Grid of Australia (MGA) Zone 56 Geodetic Datum of Australia (GDA) 1994



Trunk Sewer
Map: PFTI-SEW-13
Version 3 Date: 15-03-2021



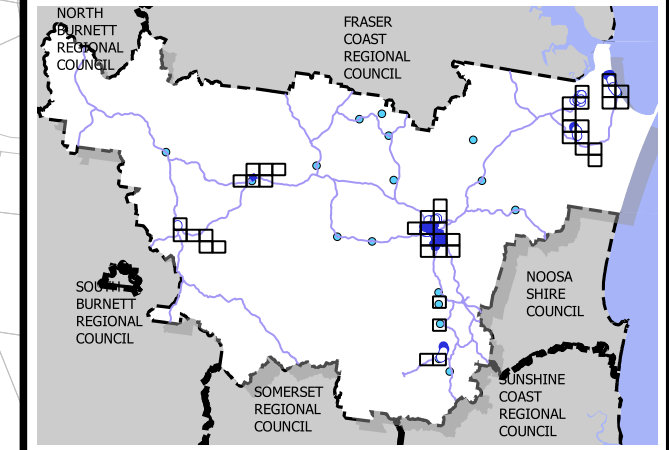
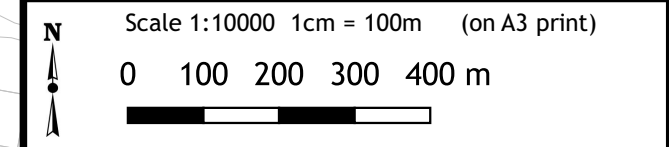
Gympie Regional Council
Plans for Trunk Infrastructure

EAST DEEP CREEK

- Existing Sewer Line
 - Pressure Main
 - Gravity Main
 - Sewer Pump Station
 - Sewage Treatment Plant
 - Existing Sewer Access Chamber
 - Future STP Upgrade
 - Future Sewer Pump Station
- Future Sewer Line
 - Rising Main
 - Trunk Sewer
- State Road Network
- Sewer Service Catchment
 - Gympie

Disclaimer
While every care is taken to ensure the accuracy of this map, Gympie Regional Council makes no representations or warranties about its accuracy, reliability, completeness or suitability for any particular purpose and disclaims all responsibility and all liability (including without limitation, liability in negligence) for all expenses, losses, damage (including indirect or consequential damage) and costs which might incur as a result of the data being inaccurate or incomplete in any way and for any reason.
© Copyright Gympie Regional Council 2016

Cadastral Disclaimer:
Despite Department of Environment and Resource Management (DERM)'s best efforts, DERM makes no representations or warranties in relation to the information, and, to the extent permitted by law, exclude or limit all warranties relating to correctness, accuracy, reliability, completeness or currency and all liability for any direct, indirect and consequential costs, losses, damages and expenses incurred in any way (including but not limited to that arising from negligence) in connection with any use of or reliance on the information.
© The State of Queensland (Dept of Environment and Resource Management (DERM)) 2016.
Map Grid of Australia (MGA) Zone 56 Geodetic Datum of Australia (GDA) 1994



Trunk Sewer
Map: PFTI-SEW-14
Version 3 Date: 15-03-2021



Gympie Regional Council Plans for Trunk Infrastructure

JONES HILL

- Existing Sewer Line
 - Pressure Main
 - Gravity Main
 - Sewer Pump Station
 - Sewage Treatment Plant
 - Existing Sewer Access Chamber
 - Future STP Upgrade
 - Future Sewer Pump Station
- Future Sewer Line
 - Rising Main
 - Trunk Sewer
 - State Road Network
- Sewer Service Catchment
 - Gympie

Disclaimer
While every care is taken to ensure the accuracy of this map, Gympie Regional Council makes no representations or warranties about its accuracy, reliability, completeness or suitability for any particular purpose and disclaims all responsibility and all liability (including without limitation, liability in negligence) for all expenses, losses, damage (including indirect or consequential damage) and costs which might incur as a result of the data being inaccurate or incomplete in any way and for any reason.

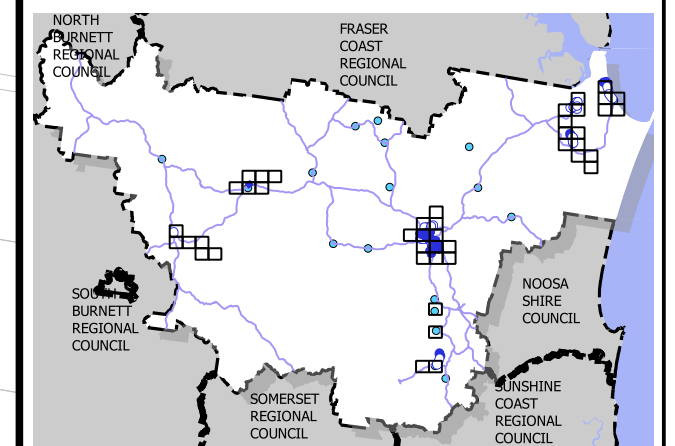
© Copyright Gympie Regional Council 2016

Cadastral Disclaimer:
Despite Department of Environment and Resource Management (DERM)'s best efforts, DERM makes no representations or warranties in relation to the information, and, to the extent permitted by law, exclude or limit all warranties relating to correctness, accuracy, reliability, completeness or currency and all liability for any direct, indirect and consequential costs, losses, damages and expenses incurred in any way (including but not limited to that arising from negligence) in connection with any use of or reliance on the information.

© The State of Queensland (Dept of Environment and Resource Management (DERM)) 2016.
Map Grid of Australia (MGA) Zone 56 Geodetic Datum of Australia (GDA) 1994

N Scale 1:10000 1cm = 100m (on A3 print)

0 100 200 300 400 m



Trunk Sewer
Map: PFTI-SEW-16
Version 3 Date: 15-03-2021



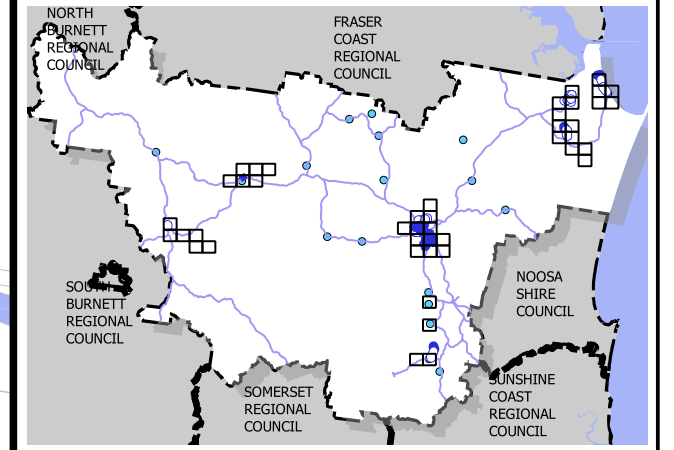
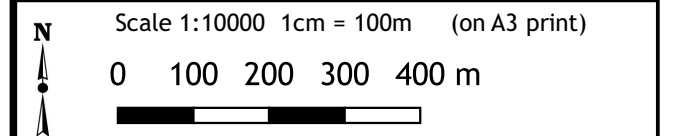
Gympie Regional Council Plans for Trunk Infrastructure

JONES HILL

- Existing Sewer Line
- Pressure Main
- Gravity Main
- Sewer Pump Station
- Sewage Treatment Plant
- Existing Sewer Access Chamber
- Future STP Upgrade
- Future Sewer Pump Station
- Future Sewer Line**
- Rising Main
- Trunk Sewer
- State Road Network
- Sewer Service Catchment**
- Gympie

Disclaimer
While every care is taken to ensure the accuracy of this map, Gympie Regional Council makes no representations or warranties about its accuracy, reliability, completeness or suitability for any particular purpose and disclaims all responsibility and all liability (including without limitation, liability in negligence) for all expenses, losses, damage (including indirect or consequential damage) and costs which might incur as a result of the data being inaccurate or incomplete in any way and for any reason.
© Copyright Gympie Regional Council 2016

Cadastral Disclaimer:
Despite Department of Environment and Resource Management (DERM)'s best efforts, DERM makes no representations or warranties in relation to the information, and, to the extent permitted by law, exclude or limit all warranties relating to correctness, accuracy, reliability, completeness or currency and all liability for any direct, indirect and consequential costs, losses, damages and expenses incurred in any way (including but not limited to that arising from negligence) in connection with any use of or reliance on the information.
© The State of Queensland (Dept of Environment and Resource Management (DERM)) 2016.
Map Grid of Australia (MGA) Zone 56 Geodetic Datum of Australia (GDA) 1994



Trunk Sewer
Map: PFTI-SEW-17
Version 3 Date: 15-03-2021



Gympie Regional Council Plans for Trunk Infrastructure

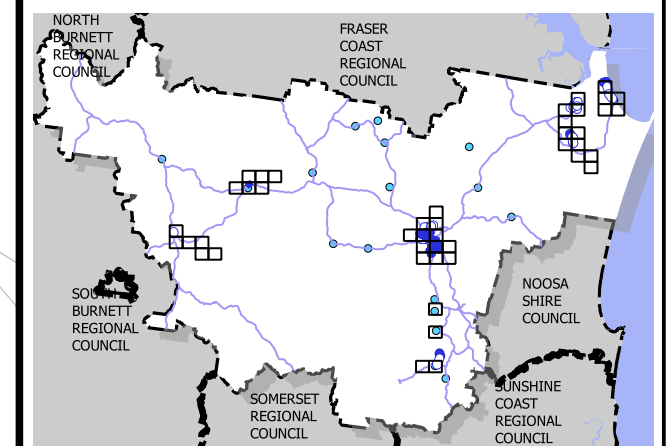
WOONDUM

- Existing Sewer Line
- Pressure Main
- Gravity Main
- Sewer Pump Station
- Sewage Treatment Plant
- Existing Sewer Access Chamber
- Future STP Upgrade
- Future Sewer Pump Station
- Future Sewer Line**
- Rising Main
- Trunk Sewer
- State Road Network
- Sewer Service Catchment**
- Gympie

Disclaimer
While every care is taken to ensure the accuracy of this map, Gympie Regional Council makes no representations or warranties about its accuracy, reliability, completeness or suitability for any particular purpose and disclaims all responsibility and all liability (including without limitation, liability in negligence) for all expenses, losses, damage (including indirect or consequential damage) and costs which might incur as a result of the data being inaccurate or incomplete in any way and for any reason.
© Copyright Gympie Regional Council 2016

Cadastral Disclaimer:
Despite Department of Environment and Resource Management (DERM)'s best efforts, DERM makes no representations or warranties in relation to the information, and, to the extent permitted by law, exclude or limit all warranties relating to correctness, accuracy, reliability, completeness or currency and all liability for any direct, indirect and consequential costs, losses, damages and expenses incurred in any way (including but not limited to that arising from negligence) in connection with any use of or reliance on the information.
© The State of Queensland (Dept of Environment and Resource Management (DERM)) 2016.
Map Grid of Australia (MGA) Zone 56 Geodetic Datum of Australia (GDA) 1994

N
Scale 1:10000 1cm = 100m (on A3 print)
0 100 200 300 400 m



Trunk Sewer
Map: PFTI-SEW-18
Version 3 Date: 15-03-2021



Gympie Regional Council Plans for Trunk Infrastructure

INSKIP

- Existing Sewer Line
 - Pressure Main
 - Gravity Main
 - Sewer Pump Station
 - Sewage Treatment Plant
 - Existing Sewer Access Chamber
 - Future STP Upgrade
 - Future Sewer Pump Station
- Future Sewer Line
 - Rising Main
 - Trunk Sewer
- State Road Network
 - State Road Network
- Sewer Service Catchment
 - Rainbow Beach

Disclaimer

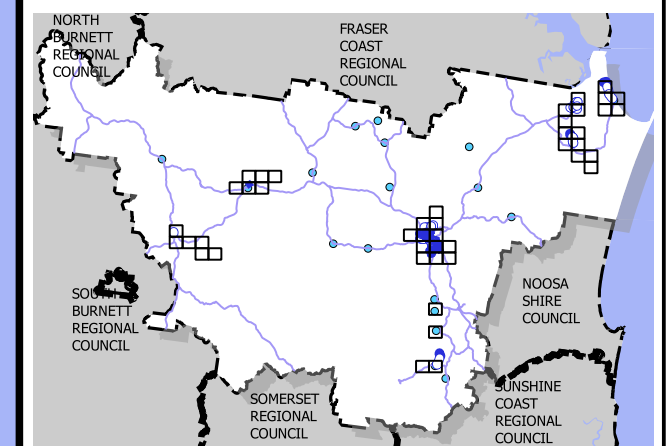
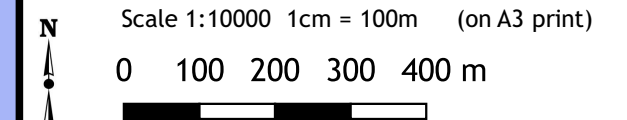
While every care is taken to ensure the accuracy of this map, Gympie Regional Council makes no representations or warranties about its accuracy, reliability, completeness or suitability for any particular purpose and disclaims all responsibility and all liability (including without limitation, liability in negligence) for all expenses, losses, damage (including indirect or consequential damage) and costs which might incur as a result of the data being inaccurate or incomplete in any way and for any reason.

© Copyright Gympie Regional Council 2016

Cadastral Disclaimer:

Despite Department of Environment and Resource Management (DERM)'s best efforts, DERM makes no representations or warranties in relation to the information, and, to the extent permitted by law, exclude or limit all warranties relating to correctness, accuracy, reliability, completeness or currency and all liability for any direct, indirect and consequential costs, losses, damages and expenses incurred in any way (including but not limited to that arising from negligence) in connection with any use of or reliance on the information.

© The State of Queensland (Dept of Environment and Resource Management (DERM)) 2016.
Map Grid of Australia (MGA) Zone 56 Geodetic Datum of Australia (GDA) 1994



Trunk Sewer

Map: PFTI-SEW-21

Version 3 Date: 15-03-2021



Gympie Regional Council Plans for Trunk Infrastructure

RAINBOW BEACH

- Existing Sewer Line
- Pressure Main
- Gravity Main
- Sewer Pump Station
- Sewage Treatment Plant
- Existing Sewer Access Chamber
- Future STP Upgrade
- Future Sewer Pump Station
- Future Sewer Line**
- Rising Main
- Trunk Sewer
- State Road Network
- Sewer Service Catchment**
- Rainbow Beach

Disclaimer

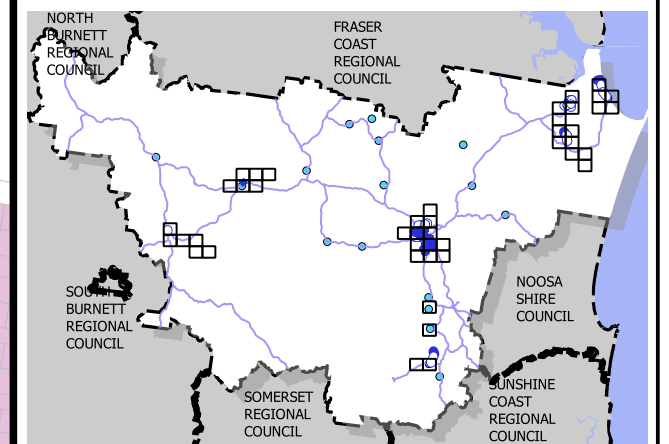
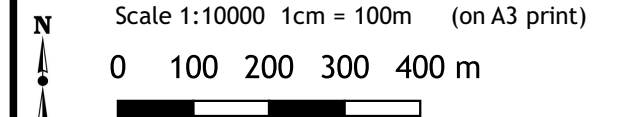
While every care is taken to ensure the accuracy of this map, Gympie Regional Council makes no representations or warranties about its accuracy, reliability, completeness or suitability for any particular purpose and disclaims all responsibility and all liability (including without limitation, liability in negligence) for all expenses, losses, damage (including indirect or consequential damage) and costs which might incur as a result of the data being inaccurate or incomplete in any way and for any reason.

© Copyright Gympie Regional Council 2016

Cadastral Disclaimer:

Despite Department of Environment and Resource Management (DERM)'s best efforts, DERM makes no representations or warranties in relation to the information, and, to the extent permitted by law, exclude or limit all warranties relating to correctness, accuracy, reliability, completeness or currency and all liability for any direct, indirect and consequential costs, losses, damages and expenses incurred in any way (including but not limited to that arising from negligence) in connection with any use of or reliance on the information.

© The State of Queensland (Dept of Environment and Resource Management (DERM)) 2016.
Map Grid of Australia (MGA) Zone 56 Geodetic Datum of Australia (GDA) 1994



Trunk Sewer

Map: PFTI-SEW-22

Version 3 Date: 15-03-2021



Gympie Regional Council Plans for Trunk Infrastructure

RAINBOW BEACH

- Existing Sewer Line
 - Pressure Main
 - Gravity Main
 - Sewer Pump Station
 - Sewage Treatment Plant
 - Existing Sewer Access Chamber
- Future Sewer Line
 - Future STP Upgrade
 - Future Sewer Pump Station
 - Rising Main
 - Trunk Sewer
- State Road Network
- Sewer Service Catchment
Rainbow Beach

Disclaimer

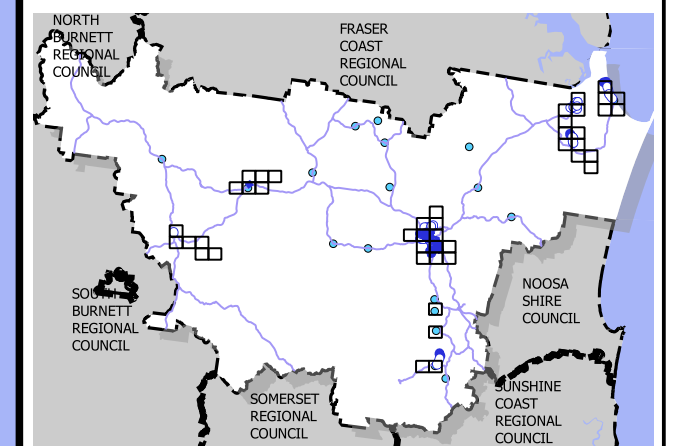
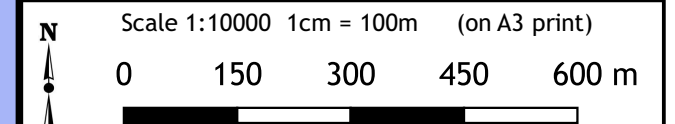
While every care is taken to ensure the accuracy of this map, Gympie Regional Council makes no representations or warranties about its accuracy, reliability, completeness or suitability for any particular purpose and disclaims all responsibility and all liability (including without limitation, liability in negligence) for all expenses, losses, damage (including indirect or consequential damage) and costs which might incur as a result of the data being inaccurate or incomplete in any way and for any reason.

© Copyright Gympie Regional Council 2016

Cadastral Disclaimer:

Despite Department of Environment and Resource Management (DERM)'s best efforts, DERM makes no representations or warranties in relation to the information, and, to the extent permitted by law, exclude or limit all warranties relating to correctness, accuracy, reliability, completeness or currency and all liability for any direct, indirect and consequential costs, losses, damages and expenses incurred in any way (including but not limited to that arising from negligence) in connection with any use of or reliance on the information.

© The State of Queensland (Dept of Environment and Resource Management (DERM)) 2016.
Map Grid of Australia (MGA) Zone 56 Geodetic Datum of Australia (GDA) 1994



Trunk Sewer

Map: PFTI-SEW-23

Version 3 Date: 15-03-2021



Gympie Regional Council Plans for Trunk Infrastructure

COOLOOLA

- Existing Sewer Line**
- Pressure Main
 - Gravity Main
 - Sewer Pump Station
 - Sewage Treatment Plant
 - Existing Sewer Access Chamber
 - Future STP Upgrade
 - Future Sewer Pump Station
- Future Sewer Line**
- Rising Main
 - Trunk Sewer
 - State Road Network
 - Sewer Service Catchment
Rainbow Beach

Disclaimer

While every care is taken to ensure the accuracy of this map, Gympie Regional Council makes no representations or warranties about its accuracy, reliability, completeness or suitability for any particular purpose and disclaims all responsibility and all liability (including without limitation, liability in negligence) for all expenses, losses, damage (including indirect or consequential damage) and costs which might incur as a result of the data being inaccurate or incomplete in any way and for any reason.

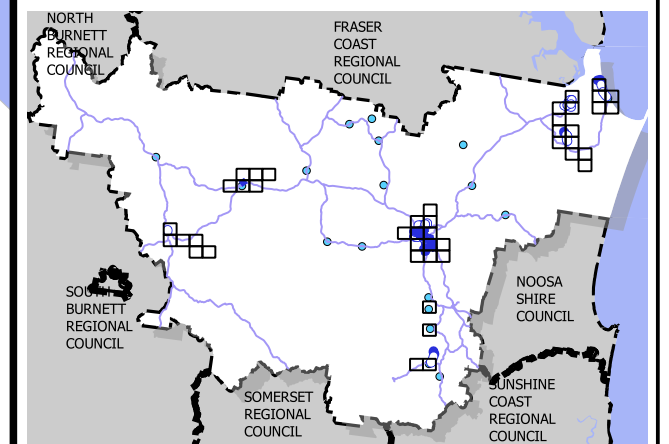
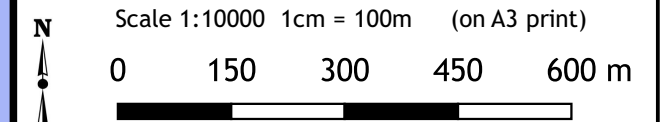
© Copyright Gympie Regional Council 2016

Cadastral Disclaimer:

Despite Department of Environment and Resource Management (DERM)'s best efforts, DERM makes no representations or warranties in relation to the information, and, to the extent permitted by law, exclude or limit all warranties relating to correctness, accuracy, reliability, completeness or currency and all liability for any direct, indirect and consequential costs, losses, damages and expenses incurred in any way (including but not limited to that arising from negligence) in connection with any use of or reliance on the information.

© The State of Queensland (Dept of Environment and Resource Management (DERM)) 2016.

Map Grid of Australia (MGA) Zone 56 Geodetic Datum of Australia (GDA) 1994



Trunk Sewer

Map: PFTI-SEW-25

Version 3 Date: 15-03-2021



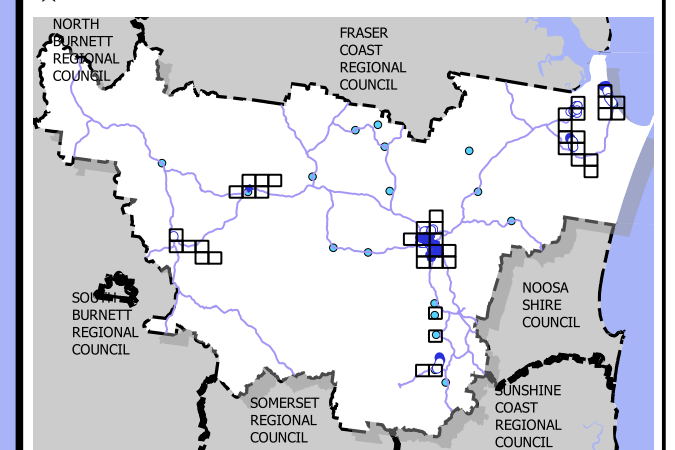
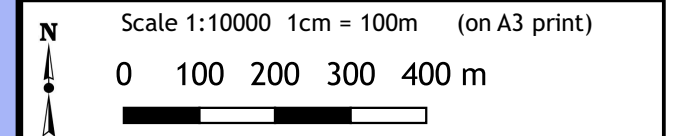
Gympie Regional Council Plans for Trunk Infrastructure

TIN CAN BAY

- Existing Sewer Line**
- Pressure Main
 - Gravity Main
 - Sewer Pump Station
 - Sewage Treatment Plant
 - Existing Sewer Access Chamber
 - Future STP Upgrade
 - Future Sewer Pump Station
- Future Sewer Line**
- Rising Main
 - Trunk Sewer
 - State Road Network
 - Sewer Service Catchment
 - Tin Can Bay

Disclaimer
While every care is taken to ensure the accuracy of this map, Gympie Regional Council makes no representations or warranties about its accuracy, reliability, completeness or suitability for any particular purpose and disclaims all responsibility and all liability (including without limitation, liability in negligence) for all expenses, losses, damage (including indirect or consequential damage) and costs which might incur as a result of the data being inaccurate or incomplete in any way and for any reason.
© Copyright Gympie Regional Council 2016

Cadastral Disclaimer:
Despite Department of Environment and Resource Management (DERM)'s best efforts, DERM makes no representations or warranties in relation to the information, and, to the extent permitted by law, exclude or limit all warranties relating to correctness, accuracy, reliability, completeness or currency and all liability for any direct, indirect and consequential costs, losses, damages and expenses incurred in any way (including but not limited to that arising from negligence) in connection with any use of or reliance on the information.
© The State of Queensland (Dept of Environment and Resource Management (DERM)) 2016.
Map Grid of Australia (MGA) Zone 56 Geodetic Datum of Australia (GDA) 1994



Trunk Sewer
Map: PFTI-SEW-28
Version 3 Date: 15-03-2021



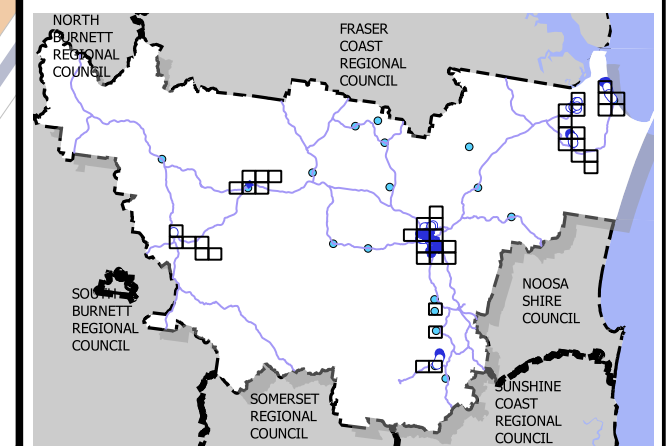
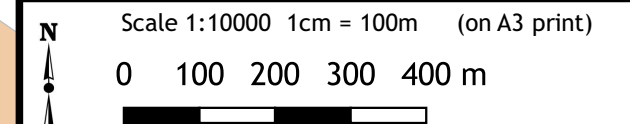
Gympie Regional Council Plans for Trunk Infrastructure

TIN CAN BAY

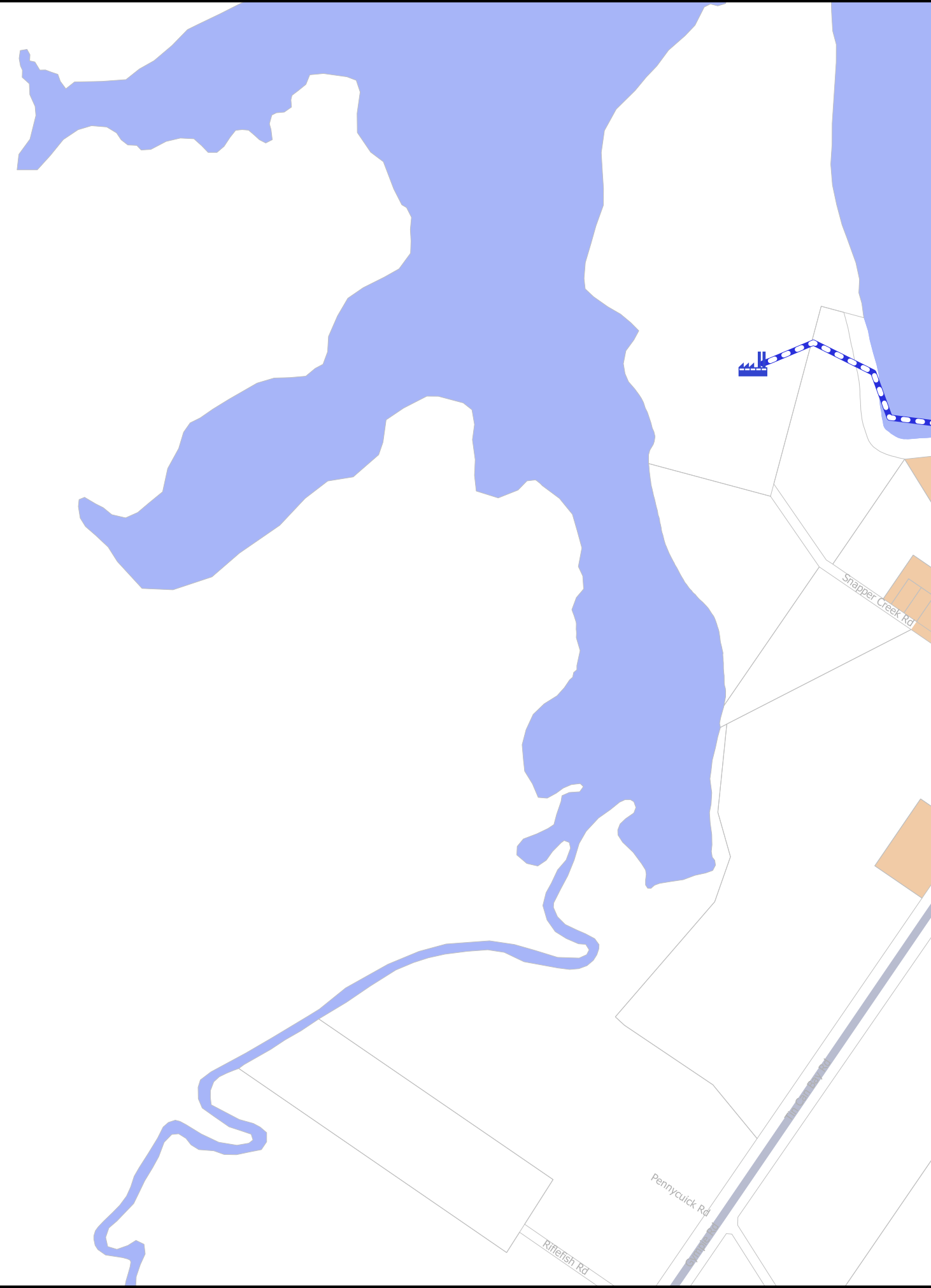
- Existing Sewer Line
 - Pressure Main
 - Gravity Main
 - Sewer Pump Station
 - Sewage Treatment Plant
 - Existing Sewer Access Chamber
 - Future STP Upgrade
 - Future Sewer Pump Station
- Future Sewer Line
 - Rising Main
 - Trunk Sewer
- State Road Network
 - State Road Network
- Sewer Service Catchment
 - Tin Can Bay

Disclaimer
While every care is taken to ensure the accuracy of this map, Gympie Regional Council makes no representations or warranties about its accuracy, reliability, completeness or suitability for any particular purpose and disclaims all responsibility and all liability (including without limitation, liability in negligence) for all expenses, losses, damage (including indirect or consequential damage) and costs which might incur as a result of the data being inaccurate or incomplete in any way and for any reason.
© Copyright Gympie Regional Council 2016

Cadastral Disclaimer:
Despite Department of Environment and Resource Management (DERM)'s best efforts, DERM makes no representations or warranties in relation to the information, and, to the extent permitted by law, exclude or limit all warranties relating to correctness, accuracy, reliability, completeness or currency and all liability for any direct, indirect and consequential costs, losses, damages and expenses incurred in any way (including but not limited to that arising from negligence) in connection with any use of or reliance on the information.
© The State of Queensland (Dept of Environment and Resource Management (DERM)) 2016.
Map Grid of Australia (MGA) Zone 56 Geodetic Datum of Australia (GDA) 1994



Trunk Sewer
Map: PFTI-SEW-29
Version 3 Date: 15-03-2021





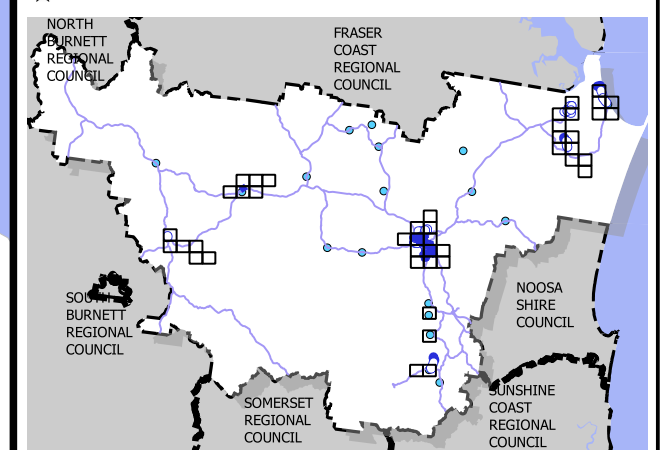
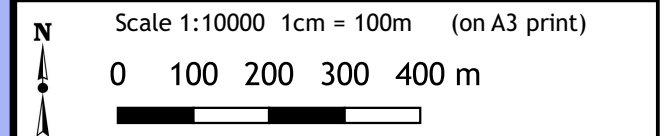
Gympie Regional Council Plans for Trunk Infrastructure

TIN CAN BAY

- Existing Sewer Line
 - Pressure Main
 - Gravity Main
 - Sewer Pump Station
 - Sewage Treatment Plant
 - Existing Sewer Access Chamber
- Future Sewer Line
 - Rising Main
 - Trunk Sewer
- Future STP Upgrade
 - Future STP Upgrade
 - Future Sewer Pump Station
- State Road Network
 - State Road Network
- Sewer Service Catchment
 - Tin Can Bay

Disclaimer
While every care is taken to ensure the accuracy of this map, Gympie Regional Council makes no representations or warranties about its accuracy, reliability, completeness or suitability for any particular purpose and disclaims all responsibility and all liability (including without limitation, liability in negligence) for all expenses, losses, damage (including indirect or consequential damage) and costs which might incur as a result of the data being inaccurate or incomplete in any way and for any reason.
© Copyright Gympie Regional Council 2016

Cadastral Disclaimer:
Despite Department of Environment and Resource Management (DERM)'s best efforts, DERM makes no representations or warranties in relation to the information, and, to the extent permitted by law, exclude or limit all warranties relating to correctness, accuracy, reliability, completeness or currency and all liability for any direct, indirect and consequential costs, losses, damages and expenses incurred in any way (including but not limited to that arising from negligence) in connection with any use of or reliance on the information.
© The State of Queensland (Dept of Environment and Resource Management (DERM)) 2016.
Map Grid of Australia (MGA) Zone 56 Geodetic Datum of Australia (GDA) 1994



Trunk Sewer
Map: PFTI-SEW-30
Version 3 Date: 15-03-2021



Gympie Regional Council Plans for Trunk Infrastructure

TIN CAN BAY

- Existing Sewer Line
 - Pressure Main
 - Gravity Main
 - Sewer Pump Station
 - Sewage Treatment Plant
 - Existing Sewer Access Chamber
 - Future STP Upgrade
 - Future Sewer Pump Station
- Future Sewer Line
 - Rising Main
 - Trunk Sewer
- State Road Network
 - State Road Network
- Sewer Service Catchment
 - Cooloola Cove

Disclaimer

While every care is taken to ensure the accuracy of this map, Gympie Regional Council makes no representations or warranties about its accuracy, reliability, completeness or suitability for any particular purpose and disclaims all responsibility and all liability (including without limitation, liability in negligence) for all expenses, losses, damage (including indirect or consequential damage) and costs which might incur as a result of the data being inaccurate or incomplete in any way and for any reason.

© Copyright Gympie Regional Council 2016

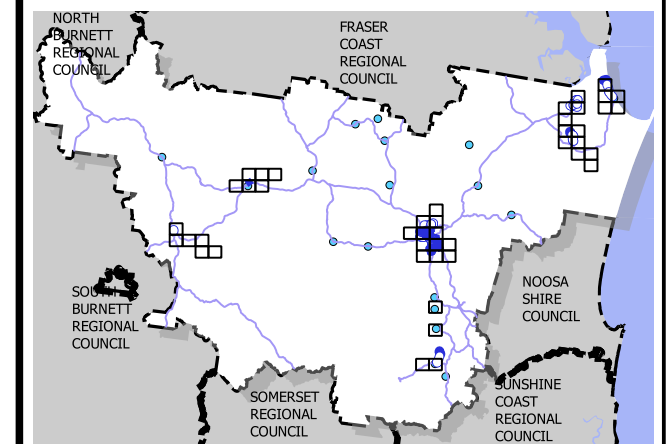
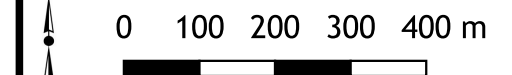
Cadastral Disclaimer:

Despite Department of Environment and Resource Management (DERM)'s best efforts, DERM makes no representations or warranties in relation to the information, and, to the extent permitted by law, exclude or limit all warranties relating to correctness, accuracy, reliability, completeness or currency and all liability for any direct, indirect and consequential costs, losses, damages and expenses incurred in any way (including but not limited to that arising from negligence) in connection with any use of or reliance on the information.

© The State of Queensland (Dept of Environment and Resource Management (DERM)) 2016.

Map Grid of Australia (MGA) Zone 56 Geodetic Datum of Australia (GDA) 1994

Scale 1:10000 1cm = 100m (on A3 print)



Trunk Sewer

Map: PFTI-SEW-31

Version 3 Date: 15-03-2021



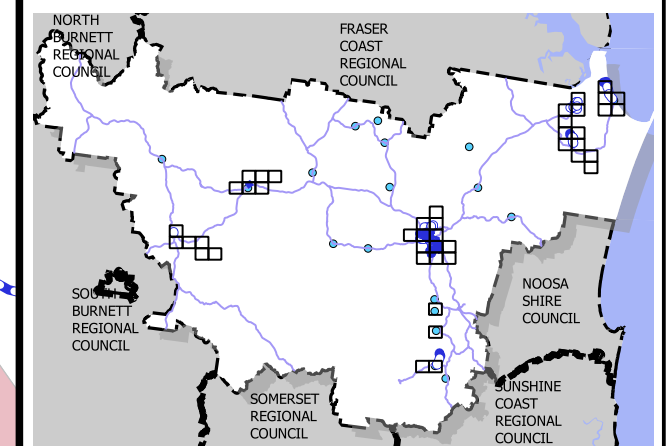
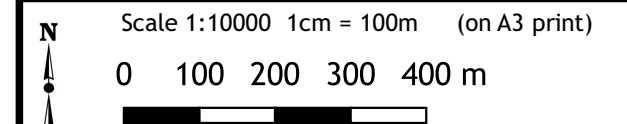
Gympie Regional Council Plans for Trunk Infrastructure

COOLOOLA COVE

- Existing Sewer Line
- Pressure Main
- Gravity Main
- Sewer Pump Station
- Sewage Treatment Plant
- Existing Sewer Access Chamber
- Future STP Upgrade
- Future Sewer Pump Station
- Future Sewer Line**
- Rising Main
- Trunk Sewer
- State Road Network
- Sewer Service Catchment**
- Cooloola Cove

Disclaimer
While every care is taken to ensure the accuracy of this map, Gympie Regional Council makes no representations or warranties about its accuracy, reliability, completeness or suitability for any particular purpose and disclaims all responsibility and all liability (including without limitation, liability in negligence) for all expenses, losses, damage (including indirect or consequential damage) and costs which might incur as a result of the data being inaccurate or incomplete in any way and for any reason.
© Copyright Gympie Regional Council 2016

Cadastral Disclaimer:
Despite Department of Environment and Resource Management (DERM)'s best efforts, DERM makes no representations or warranties in relation to the information, and, to the extent permitted by law, exclude or limit all warranties relating to correctness, accuracy, reliability, completeness or currency and all liability for any direct, indirect and consequential costs, losses, damages and expenses incurred in any way (including but not limited to that arising from negligence) in connection with any use of or reliance on the information.
© The State of Queensland (Dept of Environment and Resource Management (DERM)) 2016.
Map Grid of Australia (MGA) Zone 56 Geodetic Datum of Australia (GDA) 1994



Trunk Sewer
Map: PFTI-SEW-33
Version 3 Date: 15-03-2021



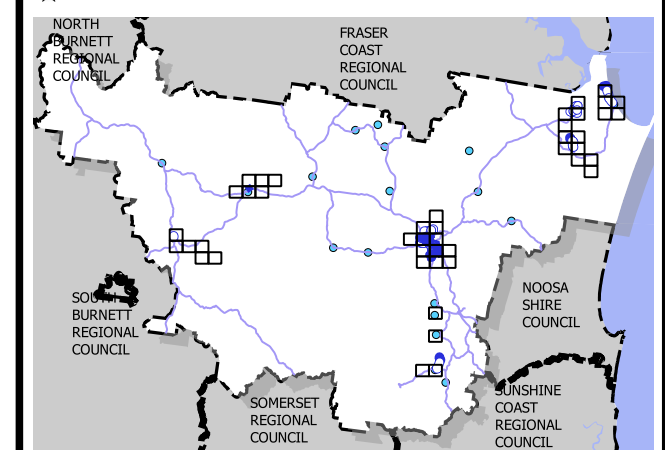
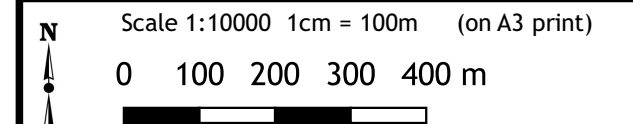
Gympie Regional Council Plans for Trunk Infrastructure

COOLOOLA COVE

- Existing Sewer Line
- Pressure Main
- Gravity Main
- Sewer Pump Station
- Sewage Treatment Plant
- Existing Sewer Access Chamber
- Future STP Upgrade
- Future Sewer Pump Station
- Future Sewer Line**
- Rising Main
- Trunk Sewer
- State Road Network
- Sewer Service Catchment**
- Cooloola Cove

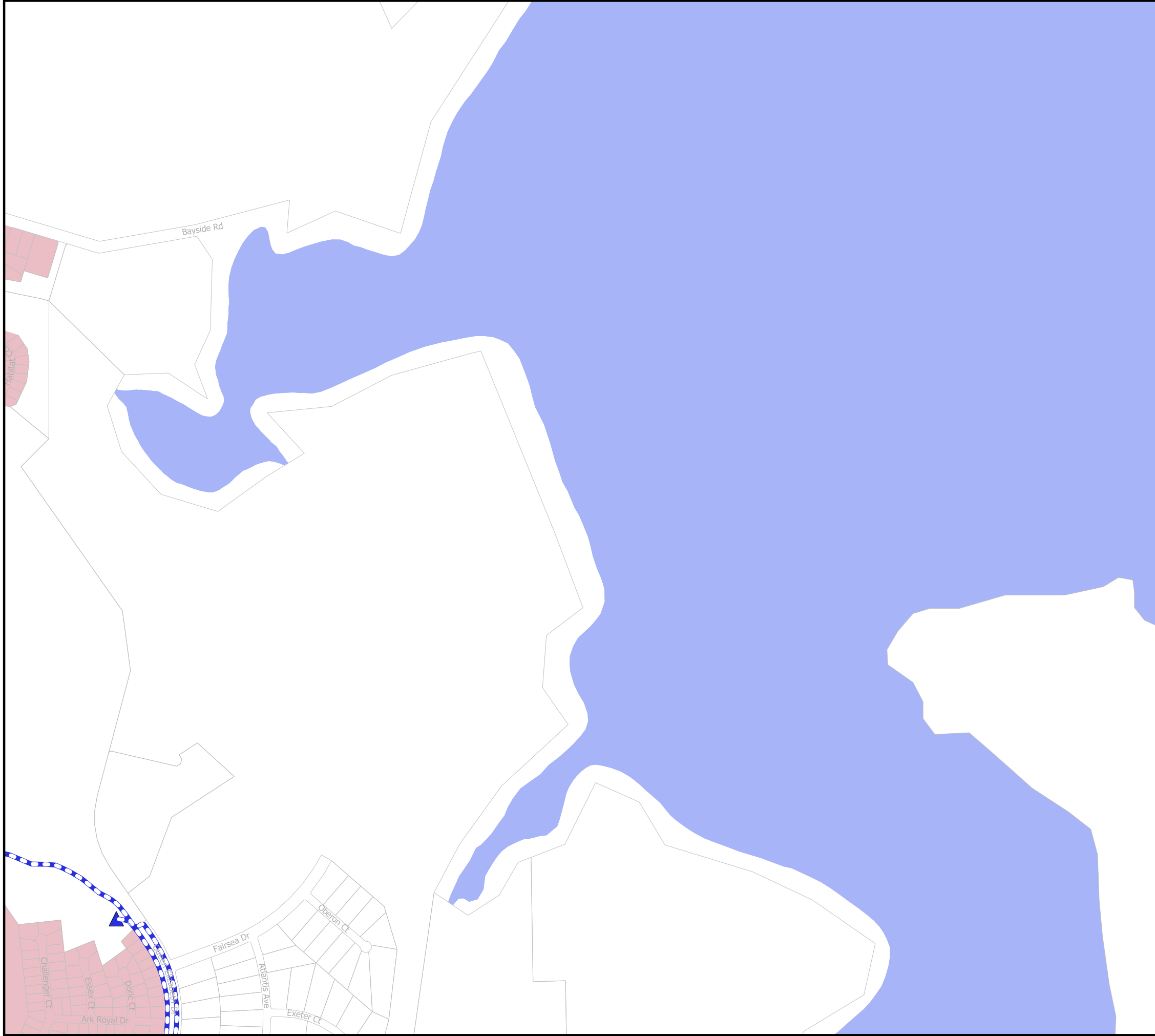
Disclaimer
While every care is taken to ensure the accuracy of this map, Gympie Regional Council makes no representations or warranties about its accuracy, reliability, completeness or suitability for any particular purpose and disclaims all responsibility and all liability (including without limitation, liability in negligence) for all expenses, losses, damage (including indirect or consequential damage) and costs which might incur as a result of the data being inaccurate or incomplete in any way and for any reason.
© Copyright Gympie Regional Council 2016

Cadastral Disclaimer:
Despite Department of Environment and Resource Management (DERM)'s best efforts, DERM makes no representations or warranties in relation to the information, and, to the extent permitted by law, exclude or limit all warranties relating to correctness, accuracy, reliability, completeness or currency and all liability for any direct, indirect and consequential costs, losses, damages and expenses incurred in any way (including but not limited to that arising from negligence) in connection with any use of or reliance on the information.
© The State of Queensland (Dept of Environment and Resource Management (DERM)) 2016.
Map Grid of Australia (MGA) Zone 56 Geodetic Datum of Australia (GDA) 1994



Trunk Sewer
Map: PFTI-SEW-34
Version 3 Date: 15-03-2021

C: Printed 20210224





Gympie Regional Council Plans for Trunk Infrastructure

TOOLARA FOREST

- Existing Sewer Line**
- Pressure Main
 - Gravity Main
 - Sewer Pump Station
 - Sewage Treatment Plant
 - Existing Sewer Access Chamber
 - Future STP Upgrade
 - Future Sewer Pump Station
- Future Sewer Line**
- Rising Main
 - Trunk Sewer
 - State Road Network
 - Sewer Service Catchment
 - Cooloola Cove

Disclaimer

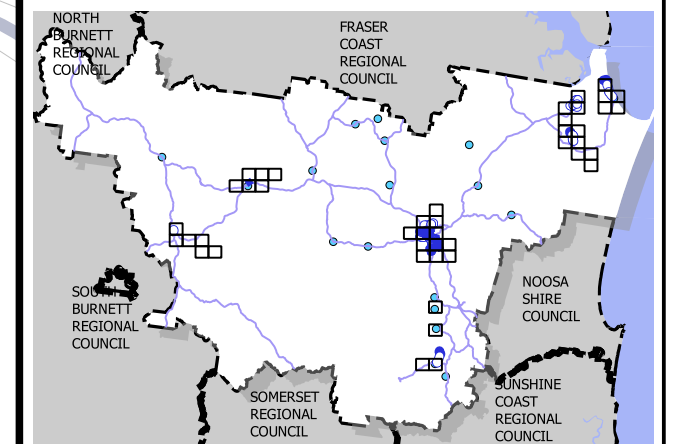
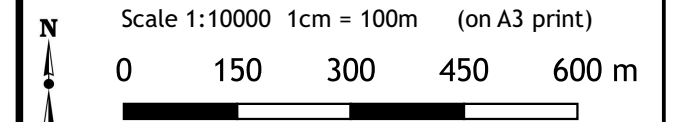
While every care is taken to ensure the accuracy of this map, Gympie Regional Council makes no representations or warranties about its accuracy, reliability, completeness or suitability for any particular purpose and disclaims all responsibility and all liability (including without limitation, liability in negligence) for all expenses, losses, damage (including indirect or consequential damage) and costs which might incur as a result of the data being inaccurate or incomplete in any way and for any reason.

© Copyright Gympie Regional Council 2016

Cadastral Disclaimer:

Despite Department of Environment and Resource Management (DERM)'s best efforts, DERM makes no representations or warranties in relation to the information, and, to the extent permitted by law, exclude or limit all warranties relating to correctness, accuracy, reliability, completeness or currency and all liability for any direct, indirect and consequential costs, losses, damages and expenses incurred in any way (including but not limited to that arising from negligence) in connection with any use of or reliance on the information.

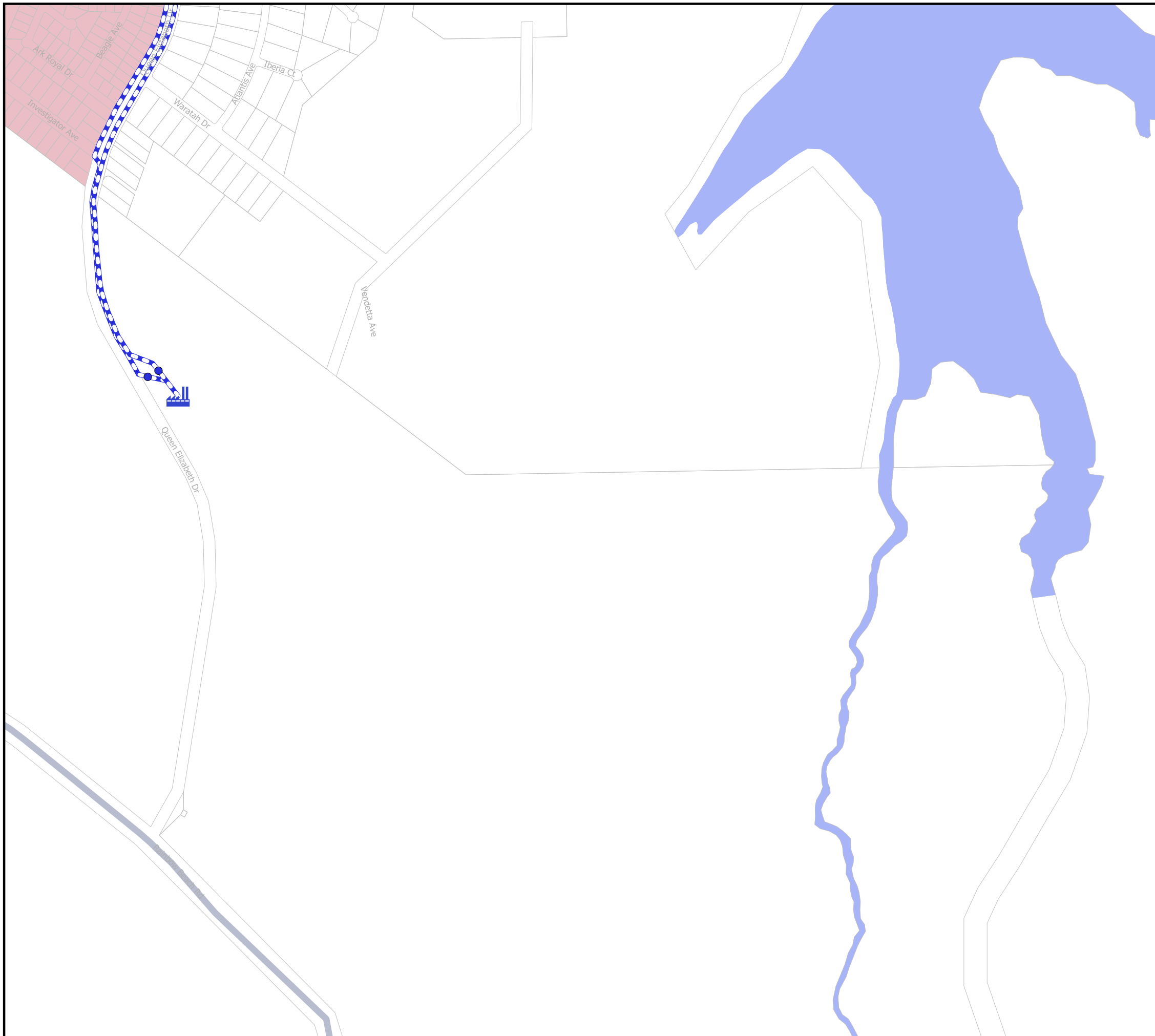
© The State of Queensland (Dept of Environment and Resource Management (DERM)) 2016.
Map Grid of Australia (MGA) Zone 56 Geodetic Datum of Australia (GDA) 1994



Trunk Sewer

Map: PFTI-SEW-35

Version 3 Date: 15-03-2021



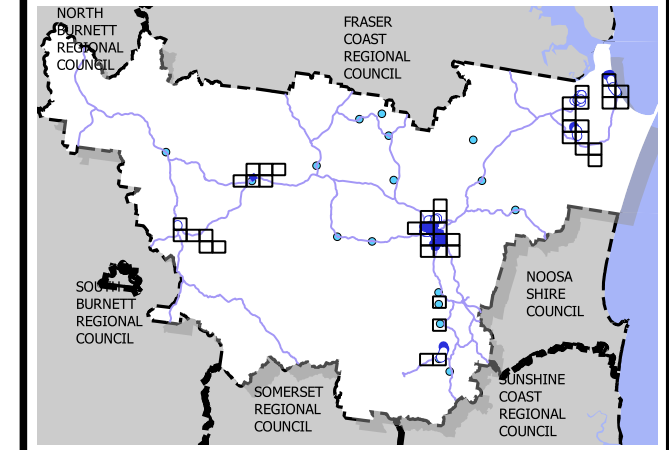
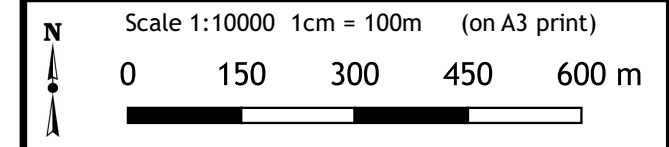
Gympie Regional Council
Plans for Trunk Infrastructure

COOLOOLA COVE

- Existing Sewer Line
 - Pressure Main
 - Gravity Main
 - Sewer Pump Station
 - Sewage Treatment Plant
 - Existing Sewer Access Chamber
 - Future STP Upgrade
 - Future Sewer Pump Station
- Future Sewer Line
 - Rising Main
 - Trunk Sewer
- State Road Network
- Sewer Service Catchment
 - Cooloola Cove

Disclaimer
While every care is taken to ensure the accuracy of this map, Gympie Regional Council makes no representations or warranties about its accuracy, reliability, completeness or suitability for any particular purpose and disclaims all responsibility and all liability (including without limitation, liability in negligence) for all expenses, losses, damage (including indirect or consequential damage) and costs which might incur as a result of the data being inaccurate or incomplete in any way and for any reason.
© Copyright Gympie Regional Council 2016

Cadastral Disclaimer:
Despite Department of Environment and Resource Management (DERM)'s best efforts, DERM makes no representations or warranties in relation to the information, and, to the extent permitted by law, exclude or limit all warranties relating to correctness, accuracy, reliability, completeness or currency and all liability for any direct, indirect and consequential costs, losses, damages and expenses incurred in any way (including but not limited to that arising from negligence) in connection with any use of or reliance on the information.
© The State of Queensland (Dept of Environment and Resource Management (DERM)) 2016.
Map Grid of Australia (MGA) Zone 56 Geodetic Datum of Australia (GDA) 1994



Trunk Sewer
Map: PFTI-SEW-36
Version 3 Date: 15-03-2021



Gympie Regional Council Plans for Trunk Infrastructure

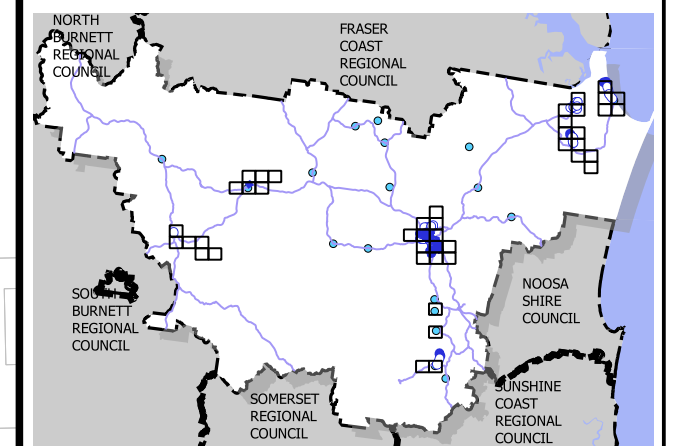
KILKIVAN

- Existing Sewer Line
 - Pressure Main
 - Gravity Main
- Sewer Pump Station
- Sewage Treatment Plant
- Existing Sewer Access Chamber
- Future STP Upgrade
- Future Sewer Pump Station
- Future Sewer Line
 - Rising Main
 - Trunk Sewer
- State Road Network
- Sewer Service Catchment
 - Kilkivan

Disclaimer
While every care is taken to ensure the accuracy of this map, Gympie Regional Council makes no representations or warranties about its accuracy, reliability, completeness or suitability for any particular purpose and disclaims all responsibility and all liability (including without limitation, liability in negligence) for all expenses, losses, damage (including indirect or consequential damage) and costs which might incur as a result of the data being inaccurate or incomplete in any way and for any reason.
© Copyright Gympie Regional Council 2016

Cadastral Disclaimer:
Despite Department of Environment and Resource Management (DERM)'s best efforts, DERM makes no representations or warranties in relation to the information, and, to the extent permitted by law, exclude or limit all warranties relating to correctness, accuracy, reliability, completeness or currency and all liability for any direct, indirect and consequential costs, losses, damages and expenses incurred in any way (including but not limited to that arising from negligence) in connection with any use of or reliance on the information.
© The State of Queensland (Dept of Environment and Resource Management (DERM)) 2016.
Map Grid of Australia (MGA) Zone 56 Geodetic Datum of Australia (GDA) 1994

N Scale 1:10000 1cm = 100m (on A3 print)
0 100 200 300 400 m



Trunk Sewer
Map: PFTI-SEW-44
Version 3 Date: 15-03-2021

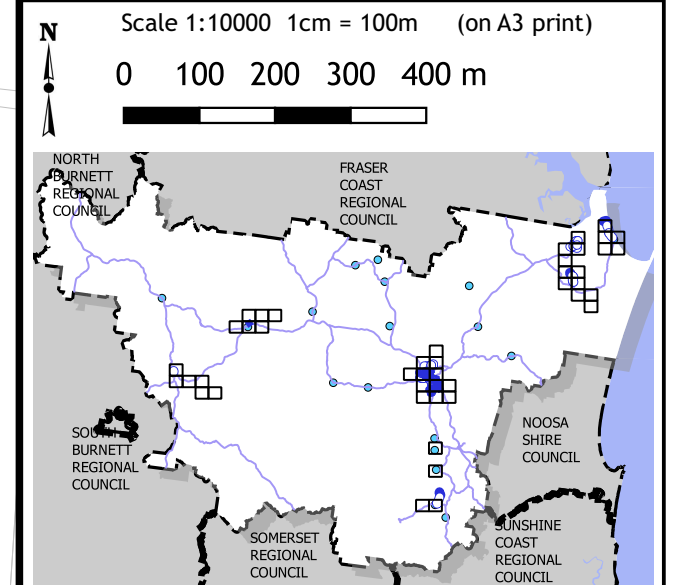


Gympie Regional Council Plans for Trunk Infrastructure

GOOMERI

- Existing Sewer Line
 - Pressure Main
 - Gravity Main
 - Sewer Pump Station
 - Sewage Treatment Plant
 - Existing Sewer Access Chamber
- Future Sewer Line
 - Future STP Upgrade
 - Future Sewer Pump Station
 - Rising Main
 - Trunk Sewer
- State Road Network
- Sewer Service Catchment
 - Goomeri

Disclaimer
While every care is taken to ensure the accuracy of this map, Gympie Regional Council makes no representations or warranties about its accuracy, reliability, completeness or suitability for any particular purpose and disclaims all responsibility and all liability (including without limitation, liability in negligence) for all expenses, losses, damage (including indirect or consequential damage) and costs which might incur as a result of the data being inaccurate or incomplete in any way and for any reason.
© Copyright Gympie Regional Council 2016
Cadastral Disclaimer:
Despite Department of Environment and Resource Management (DERM)'s best efforts, DERM makes no representations or warranties in relation to the information, and, to the extent permitted by law, exclude or limit all warranties relating to correctness, accuracy, reliability, completeness or currency and all liability for any direct, indirect and consequential costs, losses, damages and expenses incurred in any way (including but not limited to that arising from negligence) in connection with any use of or reliance on the information.
© The State of Queensland (Dept of Environment and Resource Management (DERM)) 2016.
Map Grid of Australia (MGA) Zone 56 Geodetic Datum of Australia (GDA) 1994



Trunk Sewer
Map: PFTI-SEW-47
Version 3 Date: 15-03-2021



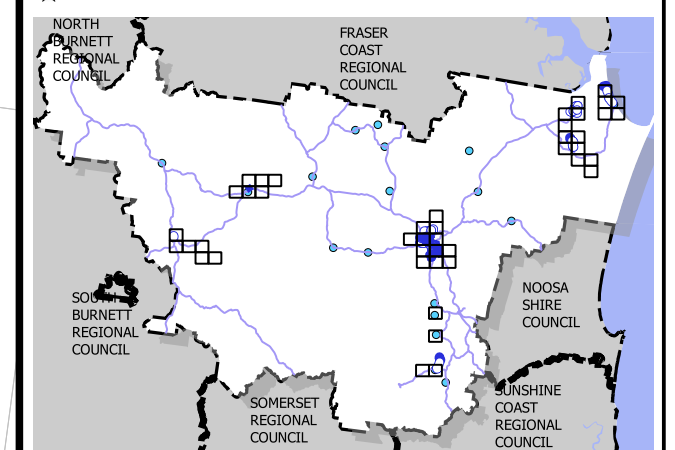
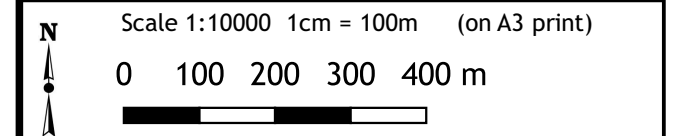
Gympie Regional Council Plans for Trunk Infrastructure

GOOMERI

- Existing Sewer Line
- Pressure Main
- Gravity Main
- Sewer Pump Station
- Sewage Treatment Plant
- Existing Sewer Access Chamber
- Future STP Upgrade
- Future Sewer Pump Station
- Future Sewer Line**
- Rising Main
- Trunk Sewer
- State Road Network
- Sewer Service Catchment**
- Goomeri

Disclaimer
While every care is taken to ensure the accuracy of this map, Gympie Regional Council makes no representations or warranties about its accuracy, reliability, completeness or suitability for any particular purpose and disclaims all responsibility and all liability (including without limitation, liability in negligence) for all expenses, losses, damage (including indirect or consequential damage) and costs which might incur as a result of the data being inaccurate or incomplete in any way and for any reason.
© Copyright Gympie Regional Council 2016

Cadastral Disclaimer:
Despite Department of Environment and Resource Management (DERM)'s best efforts, DERM makes no representations or warranties in relation to the information, and, to the extent permitted by law, exclude or limit all warranties relating to correctness, accuracy, reliability, completeness or currency and all liability for any direct, indirect and consequential costs, losses, damages and expenses incurred in any way (including but not limited to that arising from negligence) in connection with any use of or reliance on the information.
© The State of Queensland (Dept of Environment and Resource Management (DERM)) 2016.
Map Grid of Australia (MGA) Zone 56 Geodetic Datum of Australia (GDA) 1994



Trunk Sewer
Map: PFTI-SEW-50
Version 3 Date: 15-03-2021





Gympie Regional Council Plans for Trunk Infrastructure

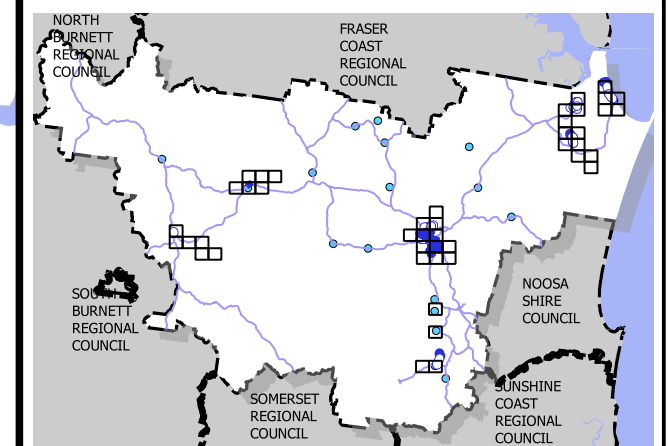
IMBIL

- Existing Sewer Line
- Pressure Main
- Gravity Main
- Sewer Pump Station
- Sewage Treatment Plant
- Existing Sewer Access Chamber
- Future STP Upgrade
- Future Sewer Pump Station
- Future Sewer Line**
- Rising Main
- Trunk Sewer
- State Road Network

Disclaimer
While every care is taken to ensure the accuracy of this map, Gympie Regional Council makes no representations or warranties about its accuracy, reliability, completeness or suitability for any particular purpose and disclaims all responsibility and all liability (including without limitation, liability in negligence) for all expenses, losses, damage (including indirect or consequential damage) and costs which might incur as a result of the data being inaccurate or incomplete in any way and for any reason.
© Copyright Gympie Regional Council 2016

Cadastral Disclaimer:
Despite Department of Environment and Resource Management (DERM)'s best efforts, DERM makes no representations or warranties in relation to the information, and, to the extent permitted by law, exclude or limit all warranties relating to correctness, accuracy, reliability, completeness or currency and all liability for any direct, indirect and consequential costs, losses, damages and expenses incurred in any way (including but not limited to that arising from negligence) in connection with any use of or reliance on the information.
© The State of Queensland (Dept of Environment and Resource Management (DERM)) 2016.
Map Grid of Australia (MGA) Zone 56 Geodetic Datum of Australia (GDA) 1994

N
Scale 1:10000 1cm = 100m (on A3 print)
0 100 200 300 400 m



Trunk Sewer
Map: PFTI-SEW-60
Version 3 Date: 15-03-2021

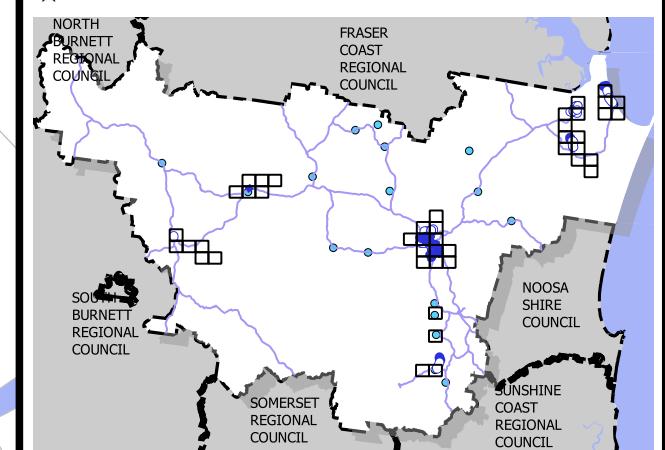
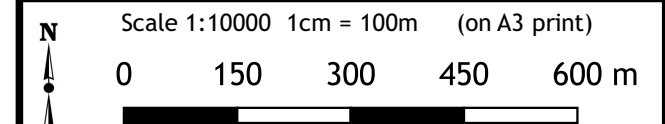


Gympie Regional Council Plans for Trunk Infrastructure

IMBIL

- Existing Sewer Line
- Pressure Main
- Gravity Main
- Sewer Pump Station
- Sewage Treatment Plant
- Existing Sewer Access Chamber
- Future STP Upgrade
- Future Sewer Pump Station
- Future Sewer Line**
- Rising Main
- Trunk Sewer
- State Road Network
- Sewer Service Catchment**
- Imbil

Disclaimer
 While every care is taken to ensure the accuracy of this map, Gympie Regional Council makes no representations or warranties about its accuracy, reliability, completeness or suitability for any particular purpose and disclaims all responsibility and all liability (including without limitation, liability in negligence) for all expenses, losses, damage (including indirect or consequential damage) and costs which might incur as a result of the data being inaccurate or incomplete in any way and for any reason.
 © Copyright Gympie Regional Council 2016
Cadastral Disclaimer:
 Despite Department of Environment and Resource Management (DERM)'s best efforts, DERM makes no representations or warranties in relation to the information, and, to the extent permitted by law, exclude or limit all warranties relating to correctness, accuracy, reliability, completeness or currency and all liability for any direct, indirect and consequential costs, losses, damages and expenses incurred in any way (including but not limited to that arising from negligence) in connection with any use of or reliance on the information.
 © The State of Queensland (Dept of Environment and Resource Management (DERM)) 2016.
 Map Grid of Australia (MGA) Zone 56 Geodetic Datum of Australia (GDA) 1994



Trunk Sewer
 Map: PFTI-SEW-62
 Version 3 Date: 15-03-2021