



Gympie Regional Council Plans for Trunk Infrastructure

ARALUEN

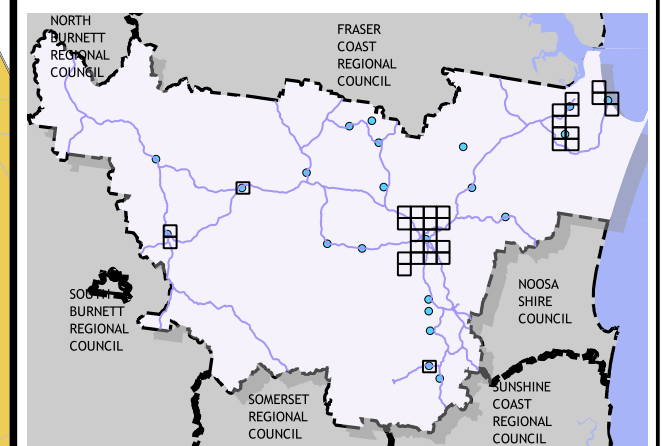
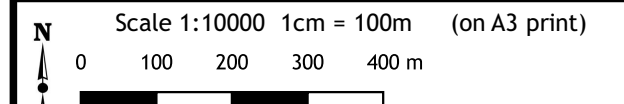
Legend

- Trunk Pathways Existing
- Trunk Pathways Future
- State Road Network

Transport Service Catchment

- Cooloola Coast
- Goomeri
- Gympie
- Imbil
- Kilkivan

Disclaimer
While every care is taken to ensure the accuracy of this map, Gympie Regional Council makes no representations or warranties about its accuracy, reliability, completeness or suitability for any particular purpose and disclaims all responsibility and all liability (including without limitation, liability in negligence) for all expenses, losses, damage (including indirect or consequential damage) and costs which might incur as a result of the data being inaccurate or incomplete in any way and for any reason.
© Copyright Gympie Regional Council 2016
Cadastral Disclaimer:
Despite Department of Environment and Resource Management (DERM)'s best efforts, DERM makes no representations or warranties in relation to the information, and, to the extent permitted by law, exclude or limit all warranties relating to correctness, accuracy, reliability, completeness or currency and all liability for any direct, indirect and consequential costs, losses, damages and expenses incurred in any way (including but not limited to that arising from negligence) in connection with any use of or reliance on the information.
© The State of Queensland (Dept of Environment and Resource Management (DERM)) 2016.
Map Grid of Australia (MGA) Zone 56 Geodetic Datum of Australia (GDA) 1994



Transport - Trunk Pathways

Map: PFTI-TPW- 6

Version 3 Date: 15-03-2021



Gympie Regional Council Plans for Trunk Infrastructure

ARALUEN

Legend

- Trunk Pathways Existing
- Trunk Pathways Future
- State Road Network

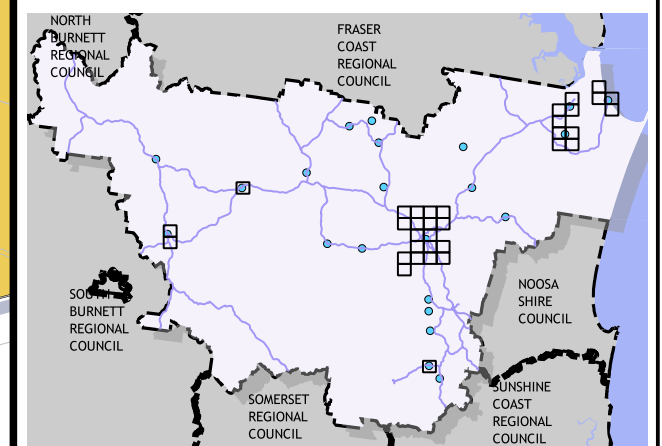
Transport Service Catchment

- Cooloola Coast
- Goomeri
- Gympie
- Imbil
- Kilkivan

Disclaimer
While every care is taken to ensure the accuracy of this map, Gympie Regional Council makes no representations or warranties about its accuracy, reliability, completeness or suitability for any particular purpose and disclaims all responsibility and all liability (including without limitation, liability in negligence) for all expenses, losses, damage (including indirect or consequential damage) and costs which might incur as a result of the data being inaccurate or incomplete in any way and for any reason.
© Copyright Gympie Regional Council 2016

Cadastral Disclaimer:
Despite Department of Environment and Resource Management (DERM)'s best efforts, DERM makes no representations or warranties in relation to the information, and, to the extent permitted by law, exclude or limit all warranties relating to correctness, accuracy, reliability, completeness or currency and all liability for any direct, indirect and consequential costs, losses, damages and expenses incurred in any way (including but not limited to that arising from negligence) in connection with any use of or reliance on the information.
© The State of Queensland (Dept of Environment and Resource Management (DERM)) 2016.
Map Grid of Australia (MGA) Zone 56 Geodetic Datum of Australia (GDA) 1994

Scale 1:10000 1cm = 100m (on A3 print)
0 100 200 300 400 m



Transport - Trunk Pathways

Map: PFTI-TPW- 7

Version 3 Date: 15-03-2021



Gympie Regional Council Plans for Trunk Infrastructure

GYMPIE

Legend

- Trunk Pathways Existing
- Trunk Pathways Future
- State Road Network

Transport Service Catchment

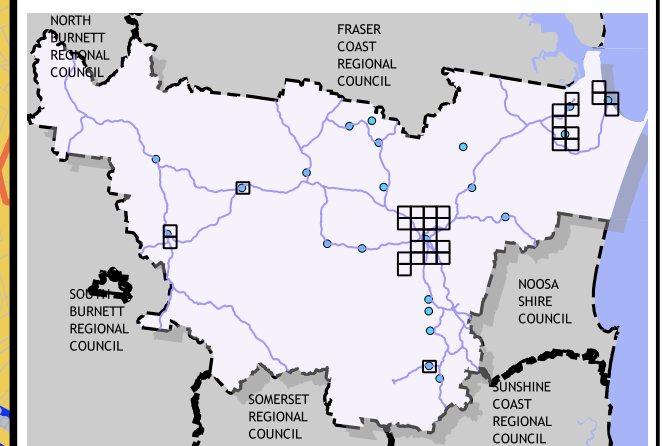
- Cooloola Coast
- Goomeri
- Gympie
- Imbil
- Kilkivan

Disclaimer
While every care is taken to ensure the accuracy of this map, Gympie Regional Council makes no representations or warranties about its accuracy, reliability, completeness or suitability for any particular purpose and disclaims all responsibility and all liability (including without limitation, liability in negligence) for all expenses, losses, damage (including indirect or consequential damage) and costs which might incur as a result of the data being inaccurate or incomplete in any way and for any reason.
© Copyright Gympie Regional Council 2016

Cadastral Disclaimer:
Despite Department of Environment and Resource Management (DERM)'s best efforts, DERM makes no representations or warranties in relation to the information, and, to the extent permitted by law, exclude or limit all warranties relating to correctness, accuracy, reliability, completeness or currency and all liability for any direct, indirect and consequential costs, losses, damages and expenses incurred in any way (including but not limited to that arising from negligence) in connection with any use of or reliance on the information.
© The State of Queensland (Dept of Environment and Resource Management (DERM)) 2016.
Map Grid of Australia (MGA) Zone 56 Geodetic Datum of Australia (GDA) 1994

Scale 1:10000 1cm = 100m (on A3 print)

0 100 200 300 400 m



Transport - Trunk Pathways

Map: PFTI-TPW- 10

Version 3 Date: 15-03-2021



Gympie Regional Council Plans for Trunk Infrastructure

GYMPIE

Legend

- Trunk Pathways Existing
- Trunk Pathways Future
- State Road Network

Transport Service Catchment

- Cooloola Coast
- Goomeri
- Gympie
- Imbil
- Kilkivan

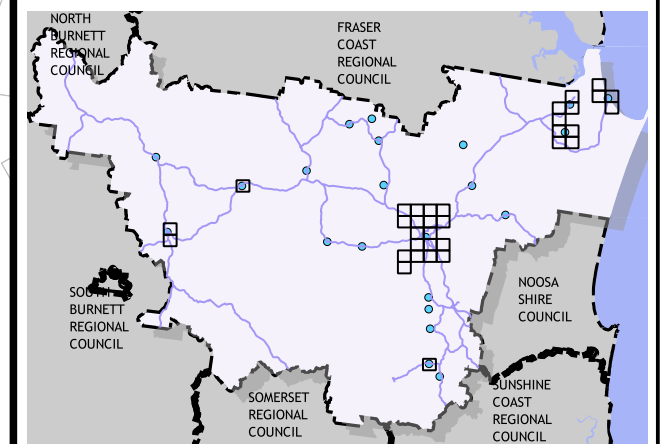
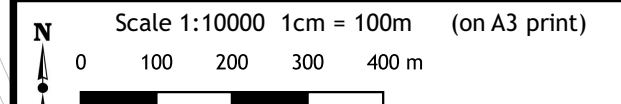
Disclaimer
While every care is taken to ensure the accuracy of this map, Gympie Regional Council makes no representations or warranties about its accuracy, reliability, completeness or suitability for any particular purpose and disclaims all responsibility and all liability (including without limitation, liability in negligence) for all expenses, losses, damage (including indirect or consequential damage) and costs which might incur as a result of the data being inaccurate or incomplete in any way and for any reason.

© Copyright Gympie Regional Council 2016

Cadastral Disclaimer:

Despite Department of Environment and Resource Management (DERM)'s best efforts, DERM makes no representations or warranties in relation to the information, and, to the extent permitted by law, exclude or limit all warranties relating to correctness, accuracy, reliability, completeness or currency and all liability for any direct, indirect and consequential costs, losses, damages and expenses incurred in any way (including but not limited to that arising from negligence) in connection with any use of or reliance on the information.

© The State of Queensland (Dept of Environment and Resource Management (DERM)) 2016.
Map Grid of Australia (MGA) Zone 56 Geodetic Datum of Australia (GDA) 1994



Transport - Trunk Pathways

Map: PFTI-TPW- 11

Version 3 Date: 15-03-2021



Gympie Regional Council Plans for Trunk Infrastructure

SOUTHSIDE

Legend

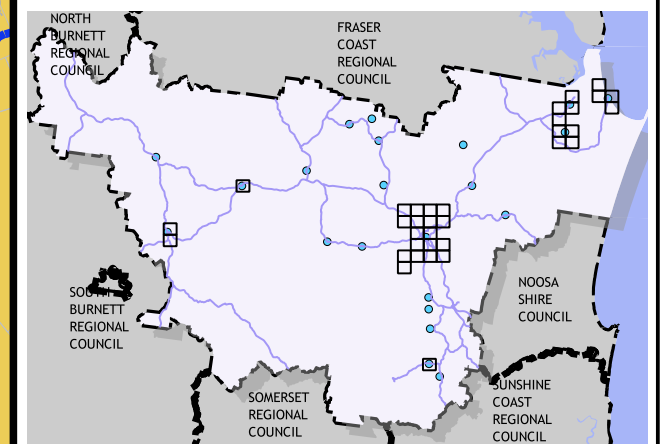
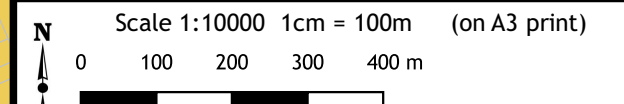
- Trunk Pathways Existing
- Trunk Pathways Future
- State Road Network

Transport Service Catchment

- Cooloola Coast
- Goomeri
- Gympie
- Imbil
- Kilkivan

Disclaimer
While every care is taken to ensure the accuracy of this map, Gympie Regional Council makes no representations or warranties about its accuracy, reliability, completeness or suitability for any particular purpose and disclaims all responsibility and all liability (including without limitation, liability in negligence) for all expenses, losses, damage (including indirect or consequential damage) and costs which might incur as a result of the data being inaccurate or incomplete in any way and for any reason.
© Copyright Gympie Regional Council 2016

Cadastral Disclaimer:
Despite Department of Environment and Resource Management (DERM)'s best efforts, DERM makes no representations or warranties in relation to the information, and, to the extent permitted by law, exclude or limit all warranties relating to correctness, accuracy, reliability, completeness or currency and all liability for any direct, indirect and consequential costs, losses, damages and expenses incurred in any way (including but not limited to that arising from negligence) in connection with any use of or reliance on the information.
© The State of Queensland (Dept of Environment and Resource Management (DERM)) 2016.
Map Grid of Australia (MGA) Zone 56 Geodetic Datum of Australia (GDA) 1994



Transport - Trunk Pathways

Map: PFTI-TPW- 12

Version 3 Date: 15-03-2021



Gympie Regional Council Plans for Trunk Infrastructure

MONKLAND

Legend

- Trunk Pathways Existing
- Trunk Pathways Future
- State Road Network

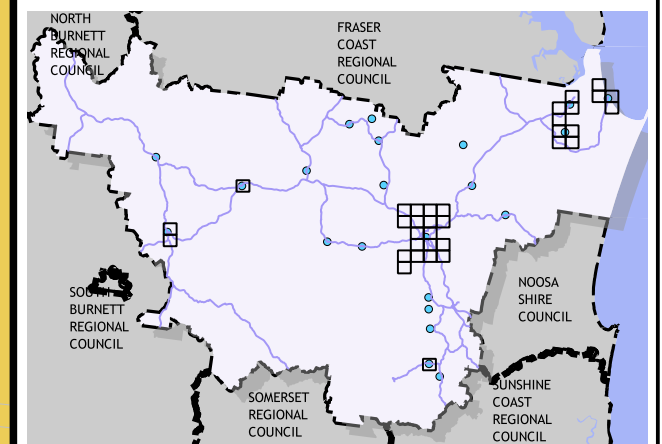
Transport Service Catchment

- Cooloola Coast
- Goomeri
- Gympie
- Imbil
- Kilkivan

Disclaimer
While every care is taken to ensure the accuracy of this map, Gympie Regional Council makes no representations or warranties about its accuracy, reliability, completeness or suitability for any particular purpose and disclaims all responsibility and all liability (including without limitation, liability in negligence) for all expenses, losses, damage (including indirect or consequential damage) and costs which might incur as a result of the data being inaccurate or incomplete in any way and for any reason.
© Copyright Gympie Regional Council 2016

Cadastral Disclaimer:
Despite Department of Environment and Resource Management (DERM)'s best efforts, DERM makes no representations or warranties in relation to the information, and, to the extent permitted by law, exclude or limit all warranties relating to correctness, accuracy, reliability, completeness or currency and all liability for any direct, indirect and consequential costs, losses, damages and expenses incurred in any way (including but not limited to that arising from negligence) in connection with any use of or reliance on the information.
© The State of Queensland (Dept of Environment and Resource Management (DERM)) 2016.
Map Grid of Australia (MGA) Zone 56 Geodetic Datum of Australia (GDA) 1994

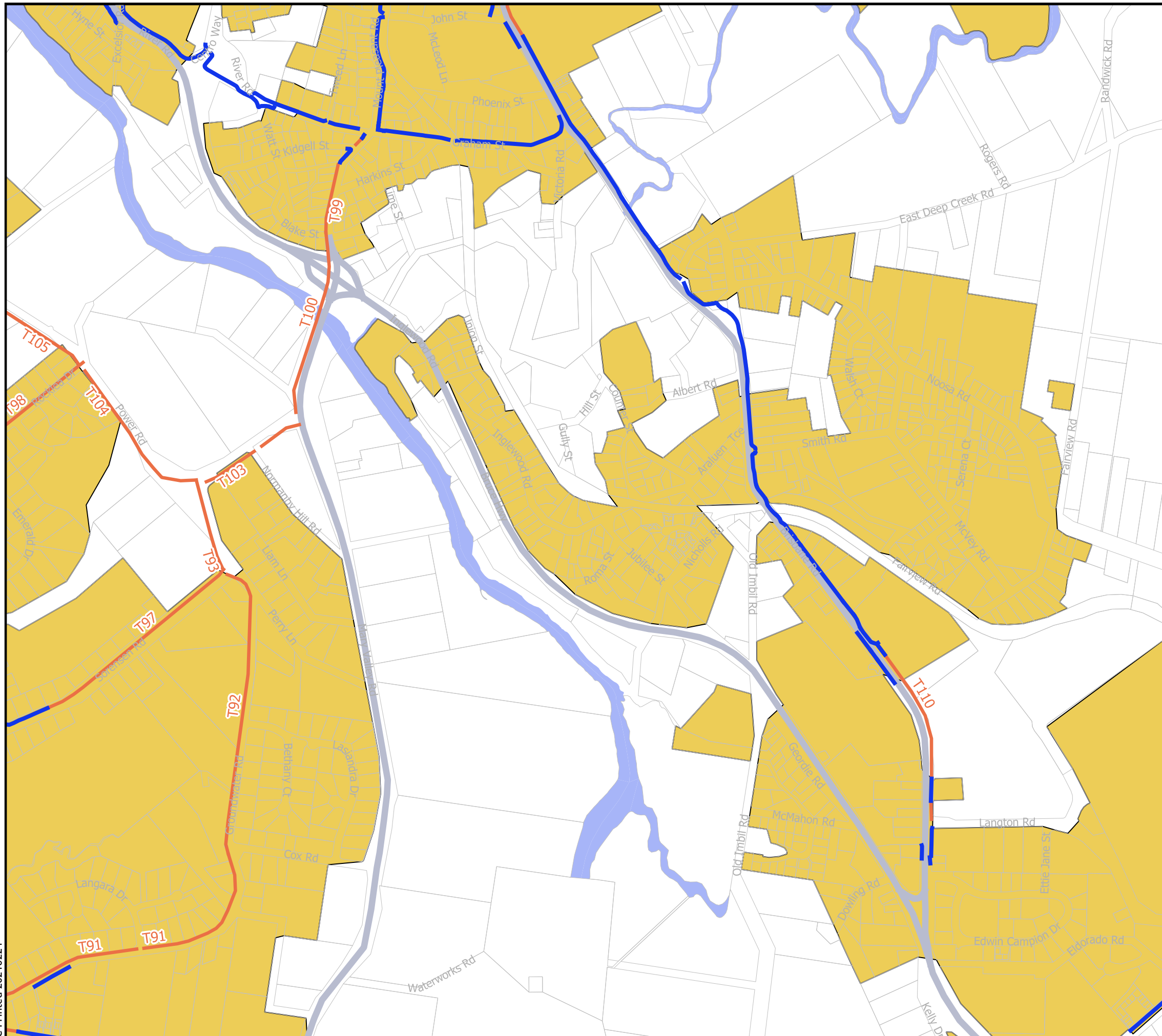
Scale 1:10000 1cm = 100m (on A3 print)
0 100 200 300 400 m



Transport - Trunk Pathways

Map: PFTI-TPW- 13

Version 3 Date: 15-03-2021





Gympie Regional Council Plans for Trunk Infrastructure

EAST DEEP CREEK

Legend

- Trunk Pathways Existing
- Trunk Pathways Future
- State Road Network

Transport Service Catchment

- Cooloola Coast
- Goomeri
- Gympie
- Imbil
- Kilkivan

Disclaimer

While every care is taken to ensure the accuracy of this map, Gympie Regional Council makes no representations or warranties about its accuracy, reliability, completeness or suitability for any particular purpose and disclaims all responsibility and all liability (including without limitation, liability in negligence) for all expenses, losses, damage (including indirect or consequential damage) and costs which might incur as a result of the data being inaccurate or incomplete in any way and for any reason.

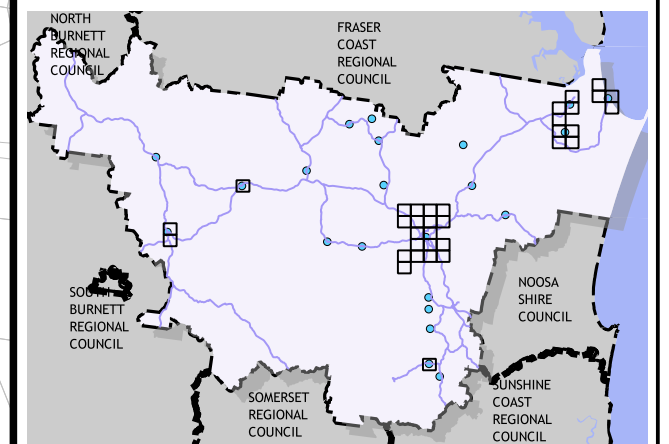
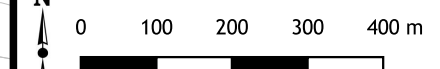
© Copyright Gympie Regional Council 2016

Cadastral Disclaimer:

Despite Department of Environment and Resource Management (DERM)'s best efforts, DERM makes no representations or warranties in relation to the information, and, to the extent permitted by law, exclude or limit all warranties relating to correctness, accuracy, reliability, completeness or currency and all liability for any direct, indirect and consequential costs, losses, damages and expenses incurred in any way (including but not limited to that arising from negligence) in connection with any use of or reliance on the information.

© The State of Queensland (Dept of Environment and Resource Management (DERM)) 2016.
Map Grid of Australia (MGA) Zone 56 Geodetic Datum of Australia (GDA) 1994

Scale 1:10000 1cm = 100m (on A3 print)



Transport - Trunk Pathways

Map: PFTI-TPW- 14

Version 3 Date: 15-03-2021



Gympie Regional Council Plans for Trunk Infrastructure

JONES HILL

Legend

- Trunk Pathways Existing
- Trunk Pathways Future
- State Road Network

Transport Service Catchment

- Cooloola Coast
- Goomeri
- Gympie
- Imbil
- Kilkivan

Disclaimer

While every care is taken to ensure the accuracy of this map, Gympie Regional Council makes no representations or warranties about its accuracy, reliability, completeness or suitability for any particular purpose and disclaims all responsibility and all liability (including without limitation, liability in negligence) for all expenses, losses, damage (including indirect or consequential damage) and costs which might incur as a result of the data being inaccurate or incomplete in any way and for any reason.

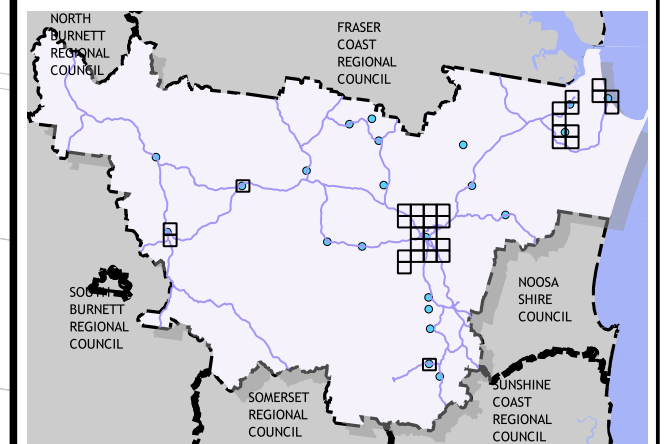
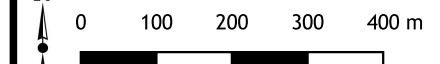
© Copyright Gympie Regional Council 2016

Cadastral Disclaimer:

Despite Department of Environment and Resource Management (DERM)'s best efforts, DERM makes no representations or warranties in relation to the information, and, to the extent permitted by law, exclude or limit all warranties relating to correctness, accuracy, reliability, completeness or currency and all liability for any direct, indirect and consequential costs, losses, damages and expenses incurred in any way (including but not limited to that arising from negligence) in connection with any use of or reliance on the information.

© The State of Queensland (Dept of Environment and Resource Management (DERM)) 2016.
Map Grid of Australia (MGA) Zone 56 Geodetic Datum of Australia (GDA) 1994

Scale 1:10000 1cm = 100m (on A3 print)



Transport - Trunk Pathways

Map: PFTI-TPW- 16

Version 3 Date: 15-03-2021



Gympie Regional Council Plans for Trunk Infrastructure

JONES HILL

Legend

- Trunk Pathways Existing
- Trunk Pathways Future
- State Road Network

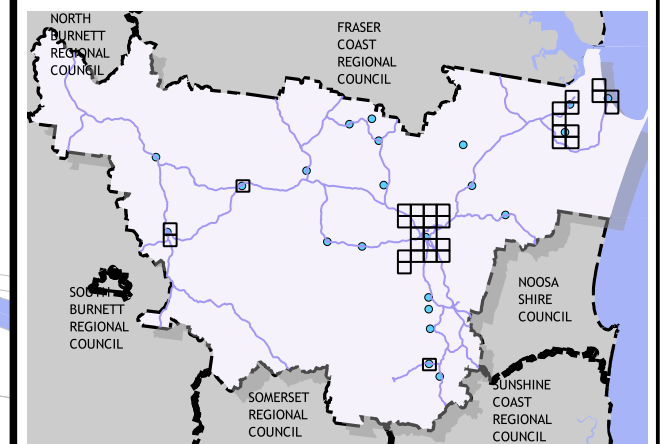
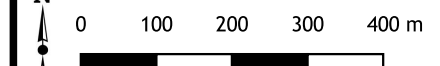
Transport Service Catchment

- Cooloola Coast
- Goomeri
- Gympie
- Imbil
- Kilkivan

Disclaimer
While every care is taken to ensure the accuracy of this map, Gympie Regional Council makes no representations or warranties about its accuracy, reliability, completeness or suitability for any particular purpose and disclaims all responsibility and all liability (including without limitation, liability in negligence) for all expenses, losses, damage (including indirect or consequential damage) and costs which might incur as a result of the data being inaccurate or incomplete in any way and for any reason.
© Copyright Gympie Regional Council 2016

Cadastral Disclaimer:
Despite Department of Environment and Resource Management (DERM)'s best efforts, DERM makes no representations or warranties in relation to the information, and, to the extent permitted by law, exclude or limit all warranties relating to correctness, accuracy, reliability, completeness or currency and all liability for any direct, indirect and consequential costs, losses, damages and expenses incurred in any way (including but not limited to that arising from negligence) in connection with any use of or reliance on the information.
© The State of Queensland (Dept of Environment and Resource Management (DERM)) 2016.
Map Grid of Australia (MGA) Zone 56 Geodetic Datum of Australia (GDA) 1994

Scale 1:10000 1cm = 100m (on A3 print)



Transport - Trunk Pathways

Map: PFTI-TPW- 17

Version 3 Date: 15-03-2021



Gympie Regional Council Plans for Trunk Infrastructure

RAINBOW BEACH

Legend

- Trunk Pathways Existing
- Trunk Pathways Future
- State Road Network

Transport Service Catchment

- Cooloola Coast
- Goomeri
- Gympie
- Imbil
- Kilkivan

Disclaimer

While every care is taken to ensure the accuracy of this map, Gympie Regional Council makes no representations or warranties about its accuracy, reliability, completeness or suitability for any particular purpose and disclaims all responsibility and all liability (including without limitation, liability in negligence) for all expenses, losses, damage (including indirect or consequential damage) and costs which might incur as a result of the data being inaccurate or incomplete in any way and for any reason.

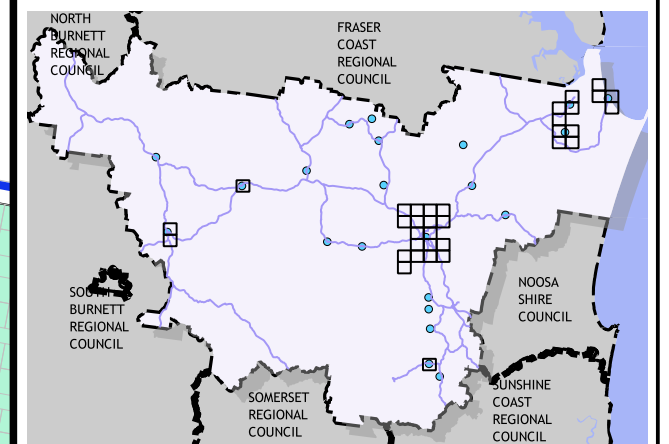
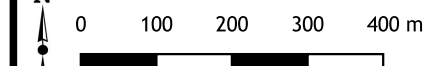
© Copyright Gympie Regional Council 2016

Cadastral Disclaimer:

Despite Department of Environment and Resource Management (DERM)'s best efforts, DERM makes no representations or warranties in relation to the information, and, to the extent permitted by law, exclude or limit all warranties relating to correctness, accuracy, reliability, completeness or currency and all liability for any direct, indirect and consequential costs, losses, damages and expenses incurred in any way (including but not limited to that arising from negligence) in connection with any use of or reliance on the information.

© The State of Queensland (Dept of Environment and Resource Management (DERM)) 2016.
Map Grid of Australia (MGA) Zone 56 Geodetic Datum of Australia (GDA) 1994

Scale 1:10000 1cm = 100m (on A3 print)



Transport - Trunk Pathways

Map: PFTI-TPW- 22




Version 3 Date: 15-03-2021



Gympie Regional Council Plans for Trunk Infrastructure

RAINBOW BEACH

Legend

-  Trunk Pathways Existing
-  Trunk Pathways Future
-  State Road Network

Transport Service Catchment

-  Cooloola Coast
-  Goomeri
-  Gympie
-  Imbil
-  Kilkivan

Disclaimer

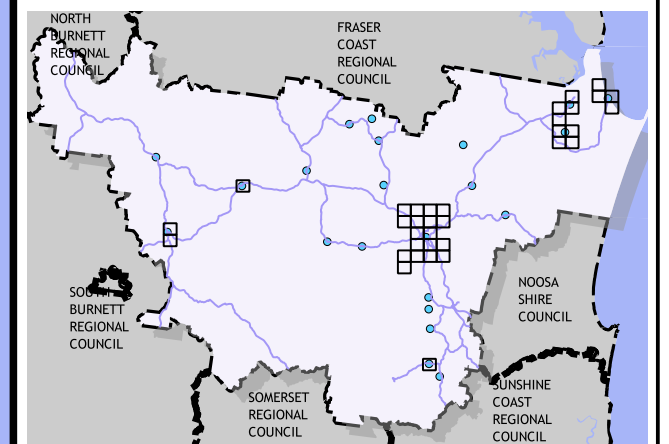
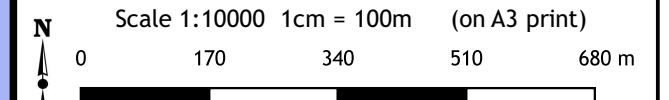
While every care is taken to ensure the accuracy of this map, Gympie Regional Council makes no representations or warranties about its accuracy, reliability, completeness or suitability for any particular purpose and disclaims all responsibility and all liability (including without limitation, liability in negligence) for all expenses, losses, damage (including indirect or consequential damage) and costs which might incur as a result of the data being inaccurate or incomplete in any way and for any reason.

© Copyright Gympie Regional Council 2016

Cadastral Disclaimer:

Despite Department of Environment and Resource Management (DERM)'s best efforts, DERM makes no representations or warranties in relation to the information, and, to the extent permitted by law, exclude or limit all warranties relating to correctness, accuracy, reliability, completeness or currency and all liability for any direct, indirect and consequential costs, losses, damages and expenses incurred in any way (including but not limited to that arising from negligence) in connection with any use of or reliance on the information.

© The State of Queensland (Dept of Environment and Resource Management (DERM)) 2016.
Map Grid of Australia (MGA) Zone 56 Geodetic Datum of Australia (GDA) 1994



Transport - Trunk Pathways

Map: PFTI-TPW- 23

Version 3 Date: 15-03-2021



Gympie Regional Council Plans for Trunk Infrastructure

TIN CAN BAY

Legend

- Trunk Pathways Existing
- Trunk Pathways Future
- State Road Network

Transport Service Catchment

- Cooloola Coast
- Goomeri
- Gympie
- Imbil
- Kilkivan

Disclaimer

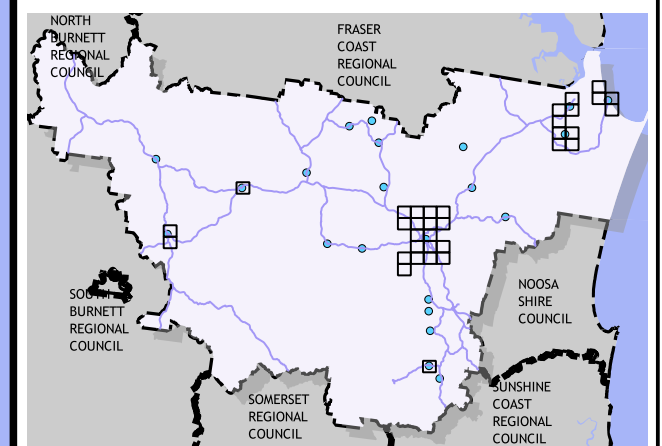
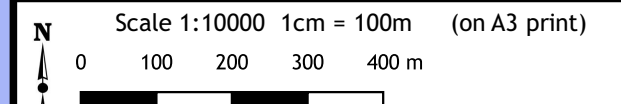
While every care is taken to ensure the accuracy of this map, Gympie Regional Council makes no representations or warranties about its accuracy, reliability, completeness or suitability for any particular purpose and disclaims all responsibility and all liability (including without limitation, liability in negligence) for all expenses, losses, damage (including indirect or consequential damage) and costs which might incur as a result of the data being inaccurate or incomplete in any way and for any reason.

© Copyright Gympie Regional Council 2016

Cadastral Disclaimer:

Despite Department of Environment and Resource Management (DERM)'s best efforts, DERM makes no representations or warranties in relation to the information, and, to the extent permitted by law, exclude or limit all warranties relating to correctness, accuracy, reliability, completeness or currency and all liability for any direct, indirect and consequential costs, losses, damages and expenses incurred in any way (including but not limited to that arising from negligence) in connection with any use of or reliance on the information.

© The State of Queensland (Dept of Environment and Resource Management (DERM)) 2016.
Map Grid of Australia (MGA) Zone 56 Geodetic Datum of Australia (GDA) 1994



Transport - Trunk Pathways

Map: PFTI-TPW- 28

Version 3 Date: 15-03-2021



Gympie Regional Council Plans for Trunk Infrastructure

TIN CAN BAY

Legend

- Trunk Pathways Existing
- Trunk Pathways Future
- State Road Network

Transport Service Catchment

- Cooloola Coast
- Goomeri
- Gympie
- Imbil
- Kilkivan

Disclaimer

While every care is taken to ensure the accuracy of this map, Gympie Regional Council makes no representations or warranties about its accuracy, reliability, completeness or suitability for any particular purpose and disclaims all responsibility and all liability (including without limitation, liability in negligence) for all expenses, losses, damage (including indirect or consequential damage) and costs which might incur as a result of the data being inaccurate or incomplete in any way and for any reason.

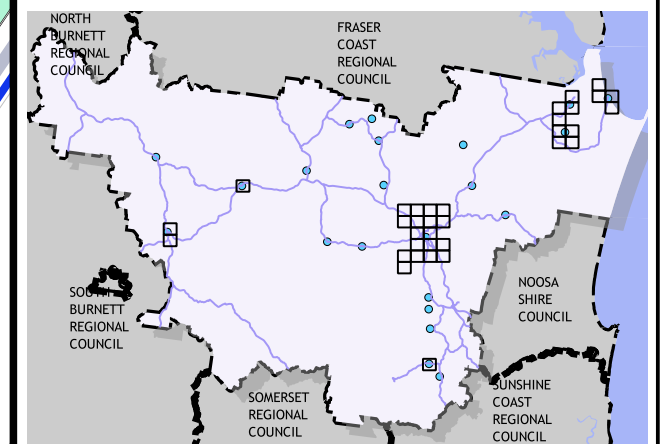
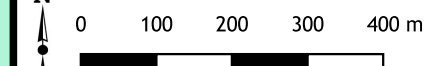
© Copyright Gympie Regional Council 2016

Cadastral Disclaimer:

Despite Department of Environment and Resource Management (DERM)'s best efforts, DERM makes no representations or warranties in relation to the information, and, to the extent permitted by law, exclude or limit all warranties relating to correctness, accuracy, reliability, completeness or currency and all liability for any direct, indirect and consequential costs, losses, damages and expenses incurred in any way (including but not limited to that arising from negligence) in connection with any use of or reliance on the information.

© The State of Queensland (Dept of Environment and Resource Management (DERM)) 2016.
Map Grid of Australia (MGA) Zone 56 Geodetic Datum of Australia (GDA) 1994

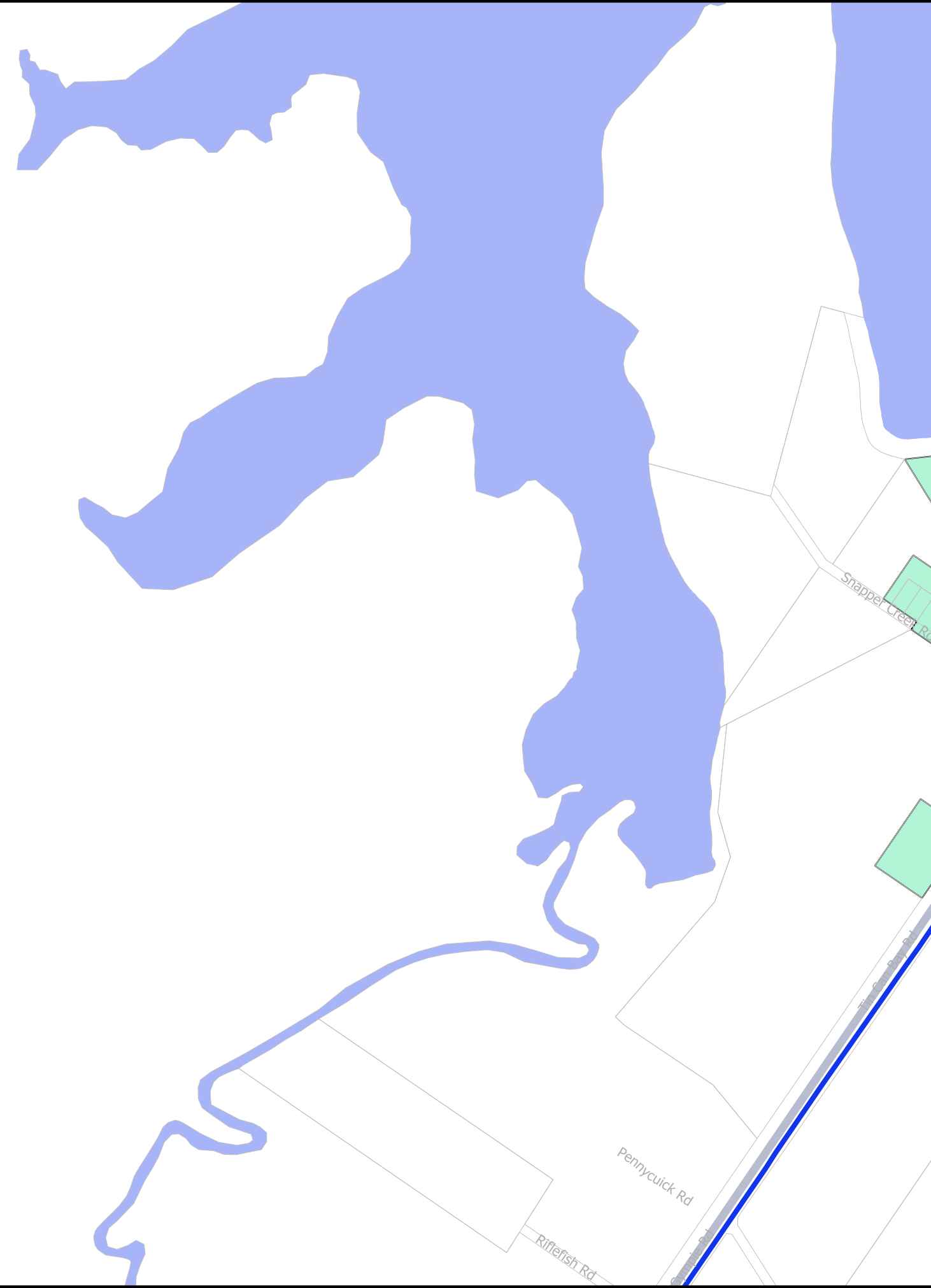
Scale 1:10000 1cm = 100m (on A3 print)



Transport - Trunk Pathways

Map: PFTI-TPW- 29

Version 3 Date: 15-03-2021








Gympie Regional Council Plans for Trunk Infrastructure

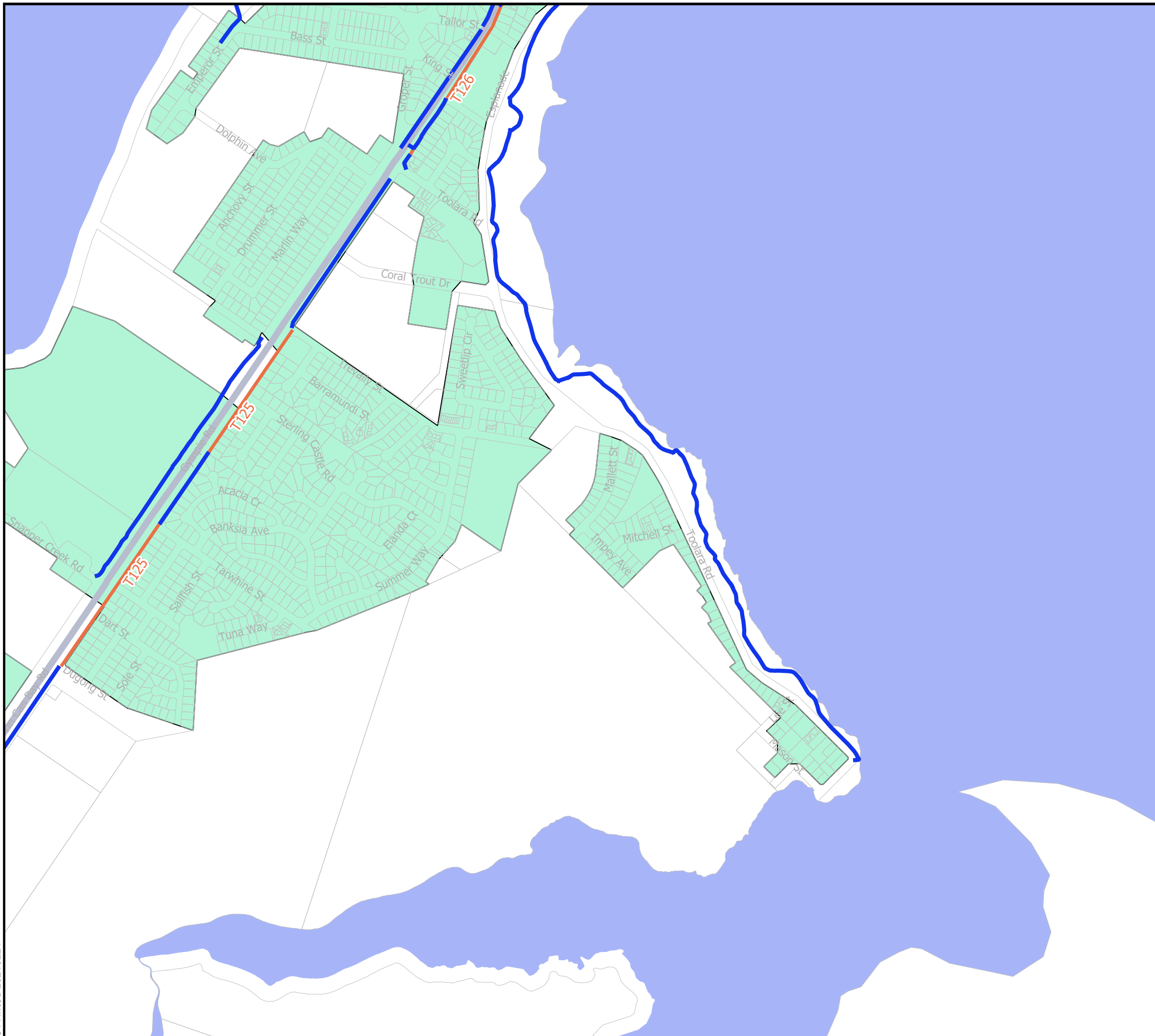
TIN CAN BAY

Legend

-  Trunk Pathways Existing
-  Trunk Pathways Future
-  State Road Network

Transport Service Catchment

-  Cooloola Coast
-  Goomeri
-  Gympie
-  Imbil
-  Kilkivan



Disclaimer
While every care is taken to ensure the accuracy of this map, Gympie Regional Council makes no representations or warranties about its accuracy, reliability, completeness or suitability for any particular purpose and disclaims all responsibility and all liability (including without limitation, liability in negligence) for all expenses, losses, damage (including indirect or consequential damage) and costs which might incur as a result of the data being inaccurate or incomplete in any way and for any reason.

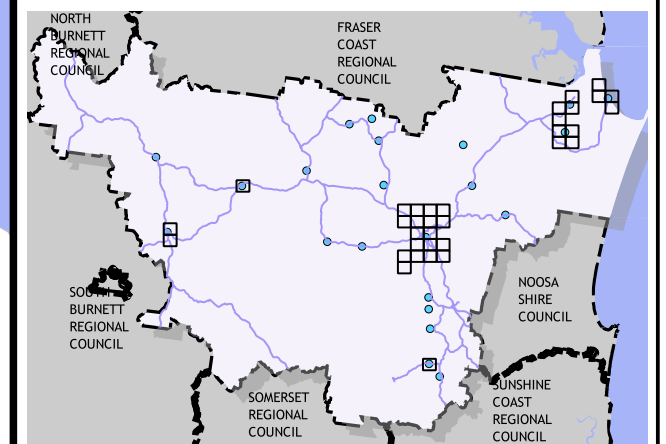
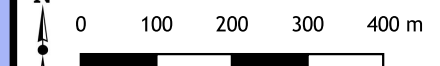
© Copyright Gympie Regional Council 2016

Cadastral Disclaimer:

Despite Department of Environment and Resource Management (DERM)'s best efforts, DERM makes no representations or warranties in relation to the information, and, to the extent permitted by law, exclude or limit all warranties relating to correctness, accuracy, reliability, completeness or currency and all liability for any direct, indirect and consequential costs, losses, damages and expenses incurred in any way (including but not limited to that arising from negligence) in connection with any use of or reliance on the information.

© The State of Queensland (Dept of Environment and Resource Management (DERM)) 2016.
Map Grid of Australia (MGA) Zone 56 Geodetic Datum of Australia (GDA) 1994

Scale 1:10000 1cm = 100m (on A3 print)



Transport - Trunk Pathways

Map: PFTI-TPW- 30

Version 3 Date: 15-03-2021



Gympie Regional Council Plans for Trunk Infrastructure

TIN CAN BAY

Legend

- Trunk Pathways Existing
- Trunk Pathways Future
- State Road Network

Transport Service Catchment

- Cooloola Coast
- Goomeri
- Gympie
- Imbil
- Kilkivan

Disclaimer

While every care is taken to ensure the accuracy of this map, Gympie Regional Council makes no representations or warranties about its accuracy, reliability, completeness or suitability for any particular purpose and disclaims all responsibility and all liability (including without limitation, liability in negligence) for all expenses, losses, damage (including indirect or consequential damage) and costs which might incur as a result of the data being inaccurate or incomplete in any way and for any reason.

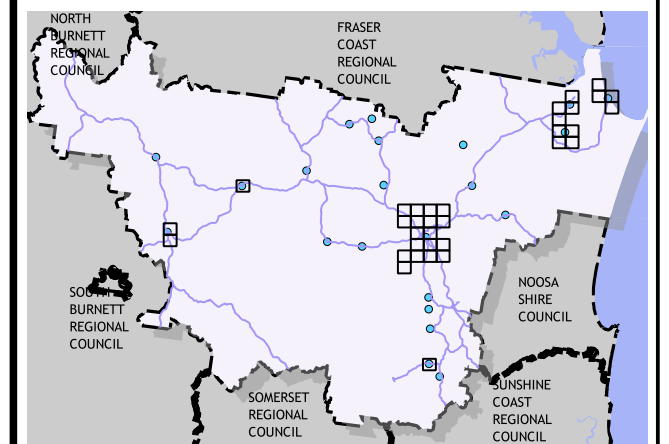
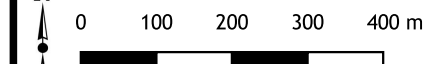
© Copyright Gympie Regional Council 2016

Cadastral Disclaimer:

Despite Department of Environment and Resource Management (DERM)'s best efforts, DERM makes no representations or warranties in relation to the information, and, to the extent permitted by law, exclude or limit all warranties relating to correctness, accuracy, reliability, completeness or currency and all liability for any direct, indirect and consequential costs, losses, damages and expenses incurred in any way (including but not limited to that arising from negligence) in connection with any use of or reliance on the information.

© The State of Queensland (Dept of Environment and Resource Management (DERM)) 2016.
Map Grid of Australia (MGA) Zone 56 Geodetic Datum of Australia (GDA) 1994

Scale 1:10000 1cm = 100m (on A3 print)



Transport - Trunk Pathways

Map: PFTI-TPW- 31

Version 3 Date: 15-03-2021



Gympie Regional Council Plans for Trunk Infrastructure

COOLOOLA COVE

Legend

- Trunk Pathways Existing
- Trunk Pathways Future
- State Road Network

Transport Service Catchment

- Cooloola Coast
- Goomeri
- Gympie
- Imbil
- Kilkivan

Disclaimer

While every care is taken to ensure the accuracy of this map, Gympie Regional Council makes no representations or warranties about its accuracy, reliability, completeness or suitability for any particular purpose and disclaims all responsibility and all liability (including without limitation, liability in negligence) for all expenses, losses, damage (including indirect or consequential damage) and costs which might incur as a result of the data being inaccurate or incomplete in any way and for any reason.

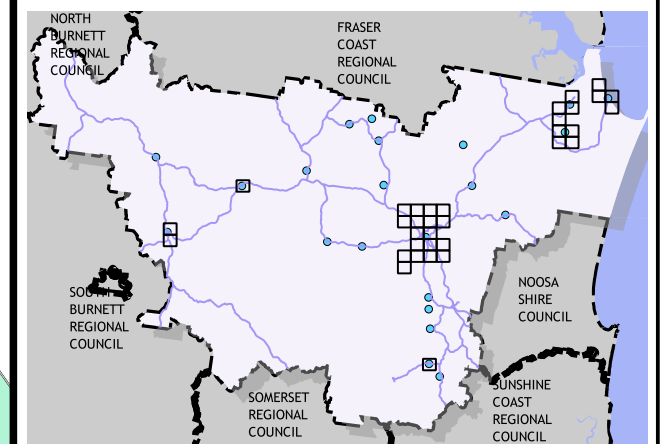
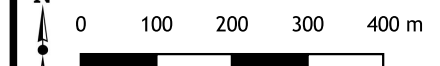
© Copyright Gympie Regional Council 2016

Cadastre Disclaimer:

Despite Department of Environment and Resource Management (DERM)'s best efforts, DERM makes no representations or warranties in relation to the information, and, to the extent permitted by law, exclude or limit all warranties relating to correctness, accuracy, reliability, completeness or currency and all liability for any direct, indirect and consequential costs, losses, damages and expenses incurred in any way (including but not limited to that arising from negligence) in connection with any use of or reliance on the information.

© The State of Queensland (Dept of Environment and Resource Management (DERM)) 2016.
Map Grid of Australia (MGA) Zone 56 Geodetic Datum of Australia (GDA) 1994

Scale 1:10000 1cm = 100m (on A3 print)



Transport - Trunk Pathways

Map: PFTI-TPW- 33

Version 3 Date: 15-03-2021



Gympie Regional Council Plans for Trunk Infrastructure

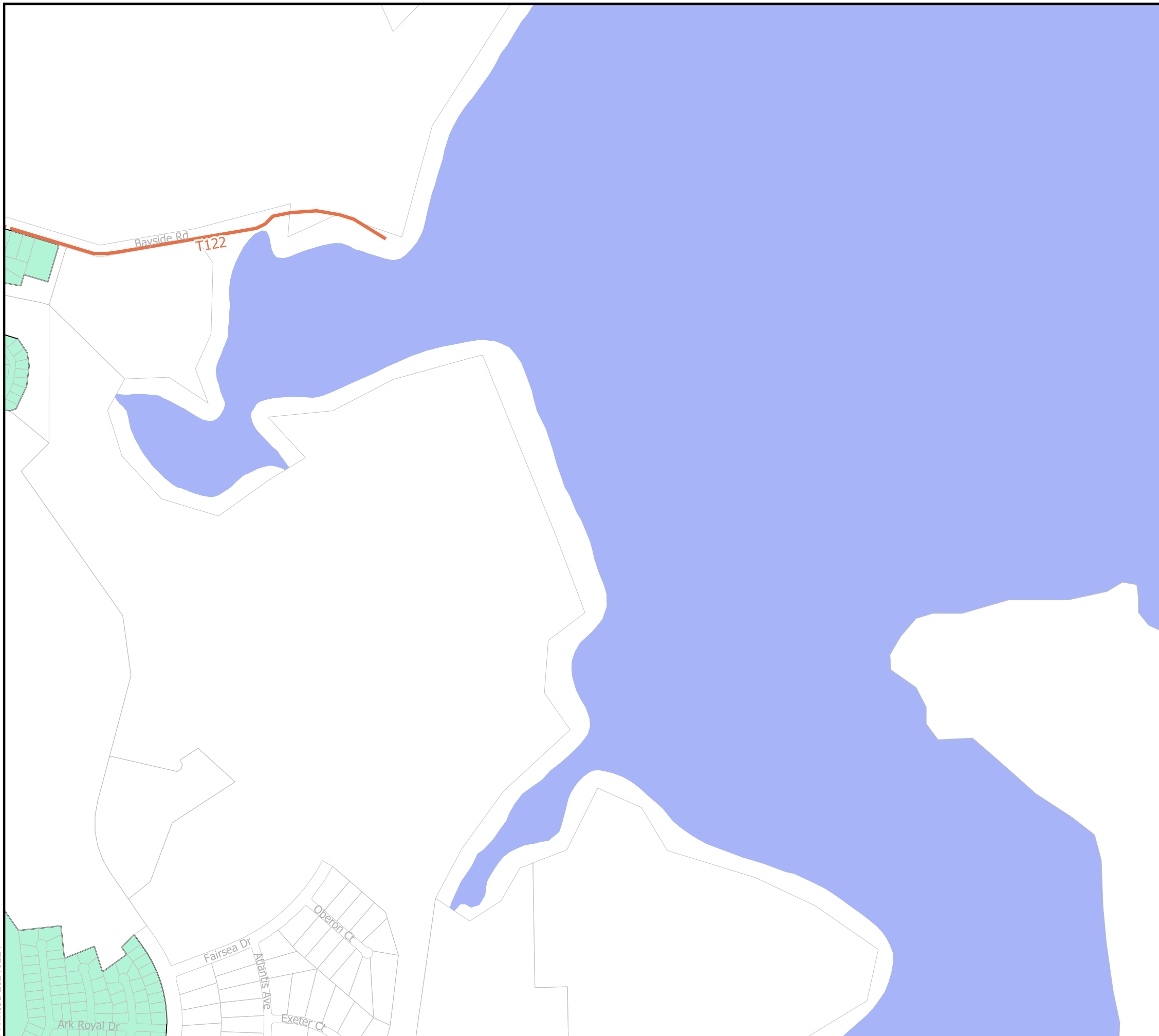
COOLOOLA COVE

Legend

- Trunk Pathways Existing
- Trunk Pathways Future
- State Road Network

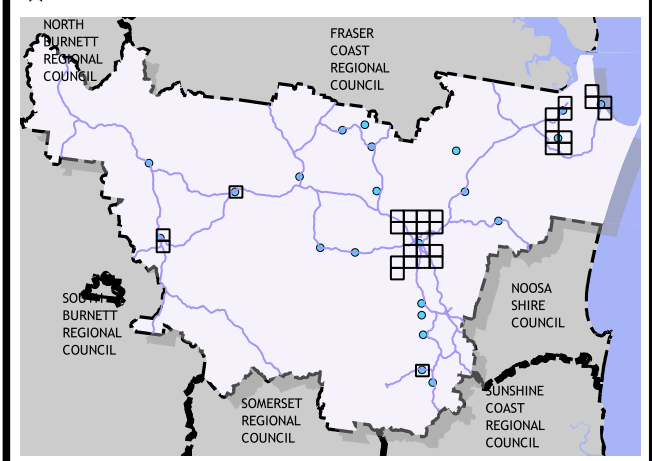
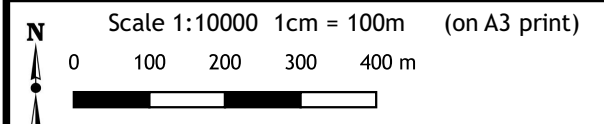
Transport Service Catchment

- Cooloola Coast
- Goomeri
- Gympie
- Imbil
- Kilkivan



Disclaimer
While every care is taken to ensure the accuracy of this map, Gympie Regional Council makes no representations or warranties about its accuracy, reliability, completeness or suitability for any particular purpose and disclaims all responsibility and all liability (including without limitation, liability in negligence) for all expenses, losses, damage (including indirect or consequential damage) and costs which might incur as a result of the data being inaccurate or incomplete in any way and for any reason.
© Copyright Gympie Regional Council 2016

Cadastral Disclaimer:
Despite Department of Environment and Resource Management (DERM)'s best efforts, DERM makes no representations or warranties in relation to the information, and, to the extent permitted by law, exclude or limit all warranties relating to correctness, accuracy, reliability, completeness or currency and all liability for any direct, indirect and consequential costs, losses, damages and expenses incurred in any way (including but not limited to that arising from negligence) in connection with any use of or reliance on the information.
© The State of Queensland (Dept of Environment and Resource Management (DERM)) 2016.
Map Grid of Australia (MGA) Zone 56 Geodetic Datum of Australia (GDA) 1994



Transport - Trunk Pathways
Map: PFTI-TPW- 34
Version 3 Date: 15-03-2021



Gympie Regional Council
Plans for Trunk Infrastructure
TOOLARA FOREST

Legend

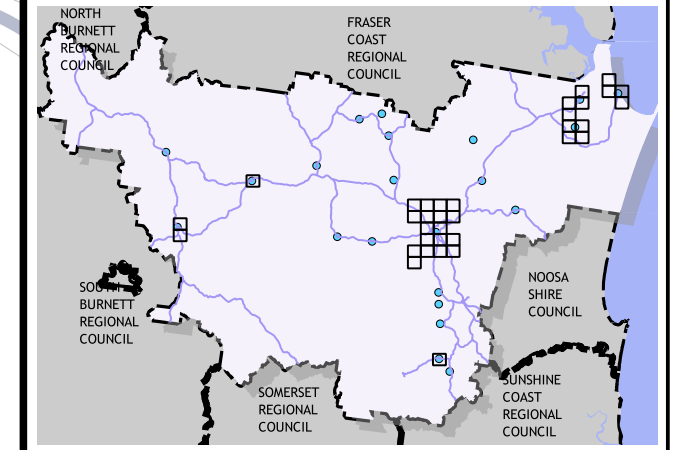
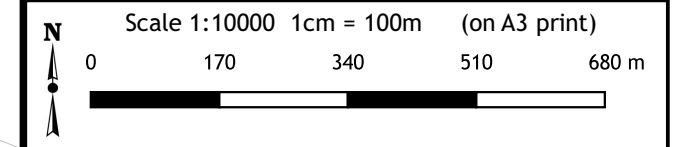
- Trunk Pathways Existing
- Trunk Pathways Future
- State Road Network

Transport Service Catchment

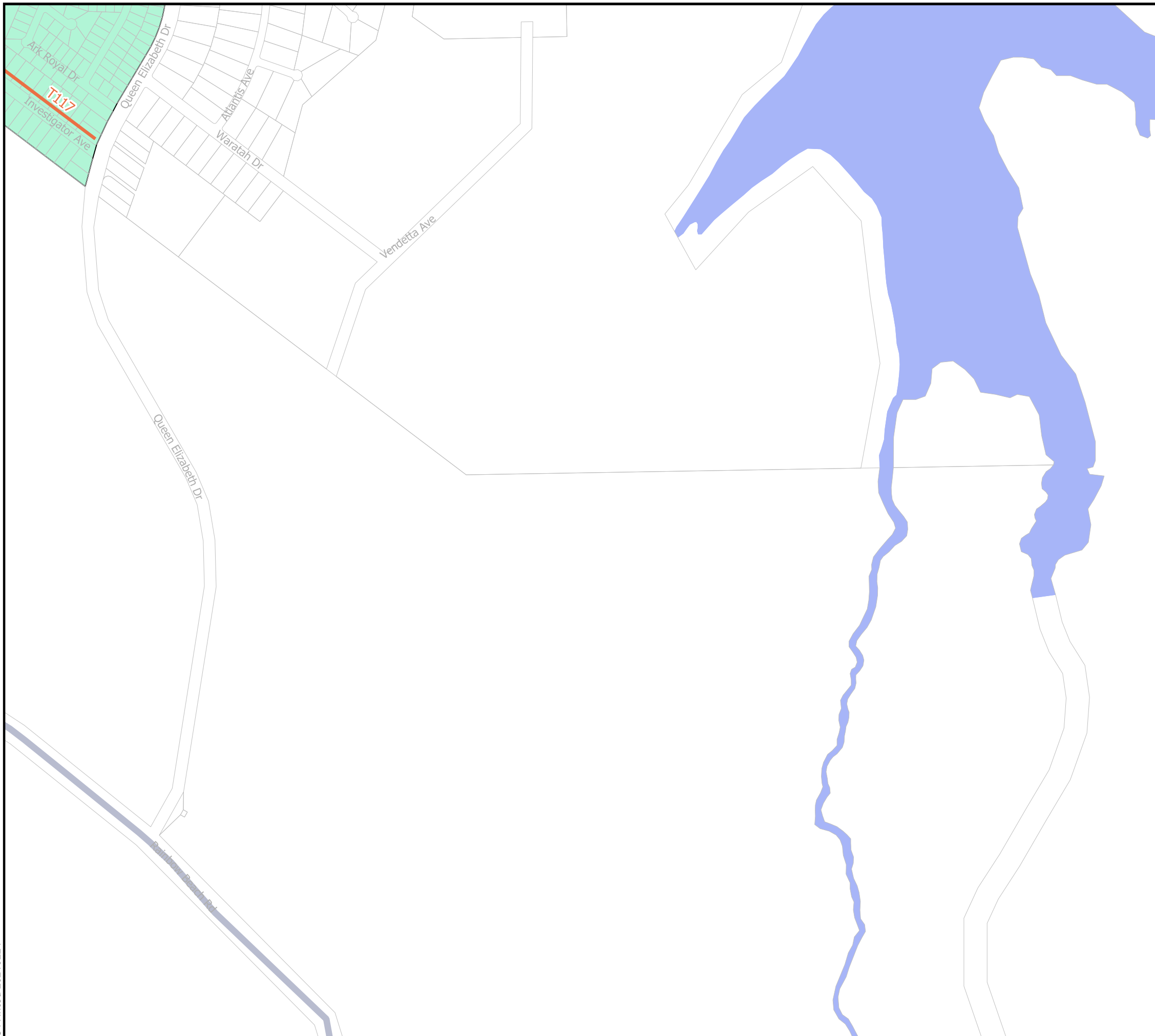
- Cooloola Coast
- Goomeri
- Gympie
- Imbil
- Kilkivan

Disclaimer
While every care is taken to ensure the accuracy of this map, Gympie Regional Council makes no representations or warranties about its accuracy, reliability, completeness or suitability for any particular purpose and disclaims all responsibility and all liability (including without limitation, liability in negligence) for all expenses, losses, damage (including indirect or consequential damage) and costs which might incur as a result of the data being inaccurate or incomplete in any way and for any reason.
© Copyright Gympie Regional Council 2016

Cadastral Disclaimer:
Despite Department of Environment and Resource Management (DERM)'s best efforts, DERM makes no representations or warranties in relation to the information, and, to the extent permitted by law, exclude or limit all warranties relating to correctness, accuracy, reliability, completeness or currency and all liability for any direct, indirect and consequential costs, losses, damages and expenses incurred in any way (including but not limited to that arising from negligence) in connection with any use of or reliance on the information.
© The State of Queensland (Dept of Environment and Resource Management (DERM)) 2016.
Map Grid of Australia (MGA) Zone 56 Geodetic Datum of Australia (GDA) 1994



Transport - Trunk Pathways
Map: PFTI-TPW- 35
Version 3 Date: 15-03-2021



Gympie Regional Council
Plans for Trunk Infrastructure

COOLOOLA COVE

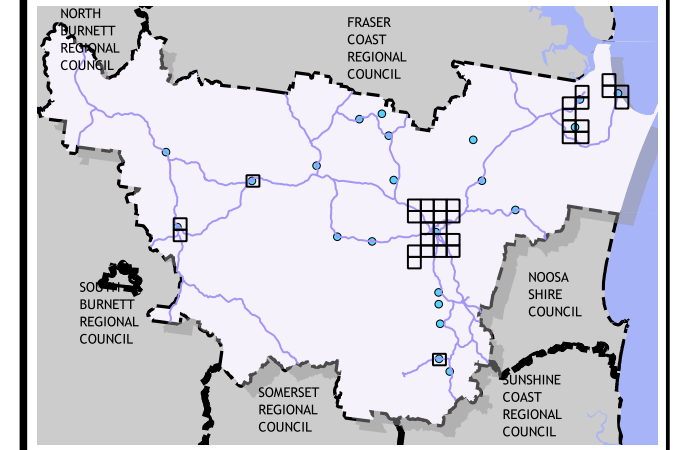
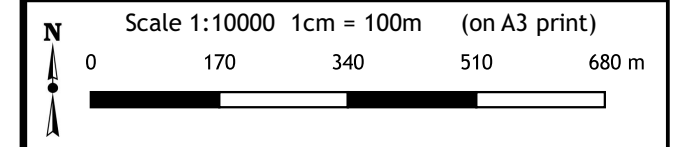
Legend

- Trunk Pathways Existing
- Trunk Pathways Future
- State Road Network

Transport Service Catchment

- Cooloola Coast
- Goomeri
- Gympie
- Imbil
- Kilkivan

Disclaimer
While every care is taken to ensure the accuracy of this map, Gympie Regional Council makes no representations or warranties about its accuracy, reliability, completeness or suitability for any particular purpose and disclaims all responsibility and all liability (including without limitation, liability in negligence) for all expenses, losses, damage (including indirect or consequential damage) and costs which might incur as a result of the data being inaccurate or incomplete in any way and for any reason.
© Copyright Gympie Regional Council 2016
Cadastral Disclaimer:
Despite Department of Environment and Resource Management (DERM)'s best efforts, DERM makes no representations or warranties in relation to the information, and, to the extent permitted by law, exclude or limit all warranties relating to correctness, accuracy, reliability, completeness or currency and all liability for any direct, indirect and consequential costs, losses, damages and expenses incurred in any way (including but not limited to that arising from negligence) in connection with any use of or reliance on the information.
© The State of Queensland (Dept of Environment and Resource Management (DERM)) 2016.
Map Grid of Australia (MGA) Zone 56 Geodetic Datum of Australia (GDA) 1994



Transport - Trunk Pathways

Map: PFTI-TPW- 36

Version 3 Date: 15-03-2021



Gympie Regional Council Plans for Trunk Infrastructure

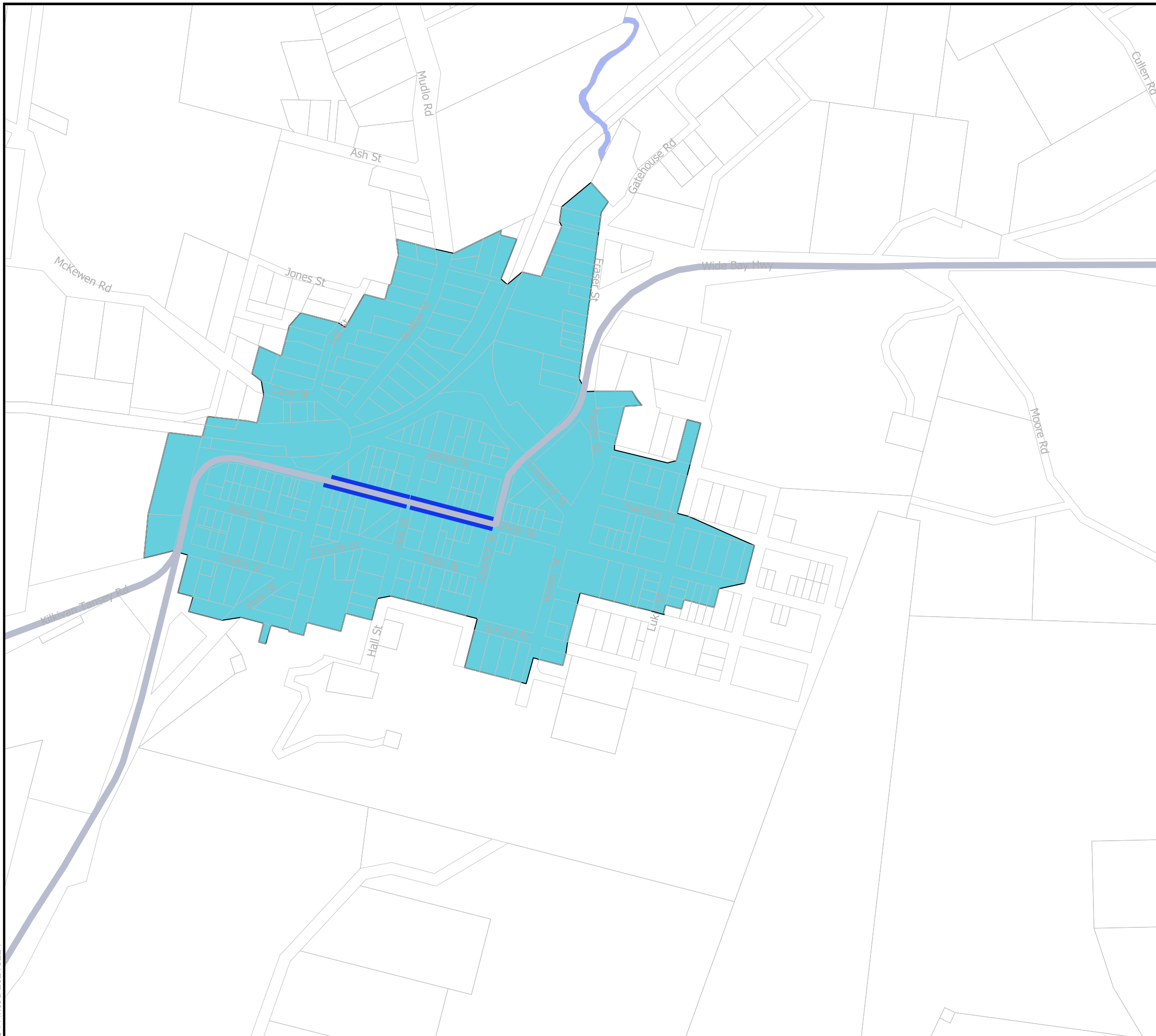
KILKIVAN

Legend

- Trunk Pathways Existing
- Trunk Pathways Future
- State Road Network

Transport Service Catchment

- Cooloola Coast
- Goomeri
- Gympie
- Imbil
- Kilkivan



Disclaimer
While every care is taken to ensure the accuracy of this map, Gympie Regional Council makes no representations or warranties about its accuracy, reliability, completeness or suitability for any particular purpose and disclaims all responsibility and all liability (including without limitation, liability in negligence) for all expenses, losses, damage (including indirect or consequential damage) and costs which might incur as a result of the data being inaccurate or incomplete in any way and for any reason.

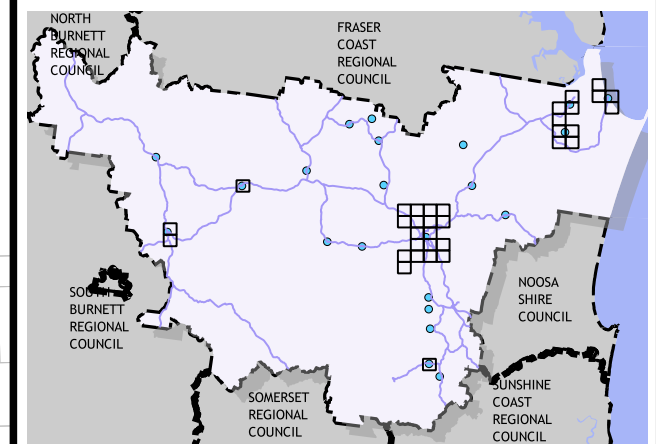
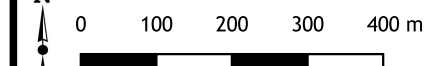
© Copyright Gympie Regional Council 2016

Cadastral Disclaimer:

Despite Department of Environment and Resource Management (DERM)'s best efforts, DERM makes no representations or warranties in relation to the information, and, to the extent permitted by law, exclude or limit all warranties relating to correctness, accuracy, reliability, completeness or currency and all liability for any direct, indirect and consequential costs, losses, damages and expenses incurred in any way (including but not limited to that arising from negligence) in connection with any use of or reliance on the information.

© The State of Queensland (Dept of Environment and Resource Management (DERM)) 2016.
Map Grid of Australia (MGA) Zone 56 Geodetic Datum of Australia (GDA) 1994

Scale 1:10000 1cm = 100m (on A3 print)



Transport - Trunk Pathways

Map: PFTI-TPW- 44

Version 3 Date: 15-03-2021



Gympie Regional Council Plans for Trunk Infrastructure

GOOMERI

Legend

- Trunk Pathways Existing
- Trunk Pathways Future
- State Road Network

Transport Service Catchment

- Cooloola Coast
- Goomeri
- Gympie
- Imbil
- Kilkivan

Disclaimer

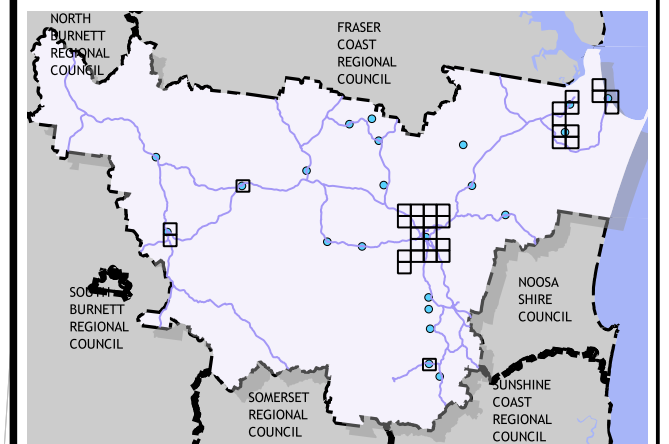
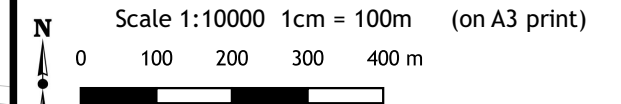
While every care is taken to ensure the accuracy of this map, Gympie Regional Council makes no representations or warranties about its accuracy, reliability, completeness or suitability for any particular purpose and disclaims all responsibility and all liability (including without limitation, liability in negligence) for all expenses, losses, damage (including indirect or consequential damage) and costs which might incur as a result of the data being inaccurate or incomplete in any way and for any reason.

© Copyright Gympie Regional Council 2016

Cadastral Disclaimer:

Despite Department of Environment and Resource Management (DERM)'s best efforts, DERM makes no representations or warranties in relation to the information, and, to the extent permitted by law, exclude or limit all warranties relating to correctness, accuracy, reliability, completeness or currency and all liability for any direct, indirect and consequential costs, losses, damages and expenses incurred in any way (including but not limited to that arising from negligence) in connection with any use of or reliance on the information.

© The State of Queensland (Dept of Environment and Resource Management (DERM)) 2016.
Map Grid of Australia (MGA) Zone 56 Geodetic Datum of Australia (GDA) 1994



Transport - Trunk Pathways

Map: PFTI-TPW- 47

Version 3 Date: 15-03-2021



Gympie Regional Council Plans for Trunk Infrastructure

GOOMERI

Legend

- Trunk Pathways Existing
- Trunk Pathways Future
- State Road Network

Transport Service Catchment

- Cooloola Coast
- Goomeri
- Gympie
- Imbil
- Kilkivan

Disclaimer

While every care is taken to ensure the accuracy of this map, Gympie Regional Council makes no representations or warranties about its accuracy, reliability, completeness or suitability for any particular purpose and disclaims all responsibility and all liability (including without limitation, liability in negligence) for all expenses, losses, damage (including indirect or consequential damage) and costs which might incur as a result of the data being inaccurate or incomplete in any way and for any reason.

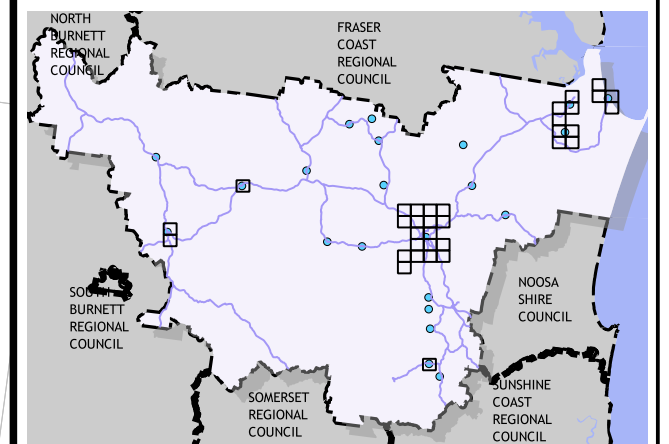
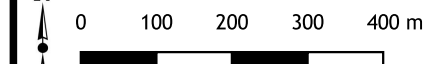
© Copyright Gympie Regional Council 2016

Cadastral Disclaimer:

Despite Department of Environment and Resource Management (DERM)'s best efforts, DERM makes no representations or warranties in relation to the information, and, to the extent permitted by law, exclude or limit all warranties relating to correctness, accuracy, reliability, completeness or currency and all liability for any direct, indirect and consequential costs, losses, damages and expenses incurred in any way (including but not limited to that arising from negligence) in connection with any use of or reliance on the information.

© The State of Queensland (Dept of Environment and Resource Management (DERM)) 2016.
Map Grid of Australia (MGA) Zone 56 Geodetic Datum of Australia (GDA) 1994

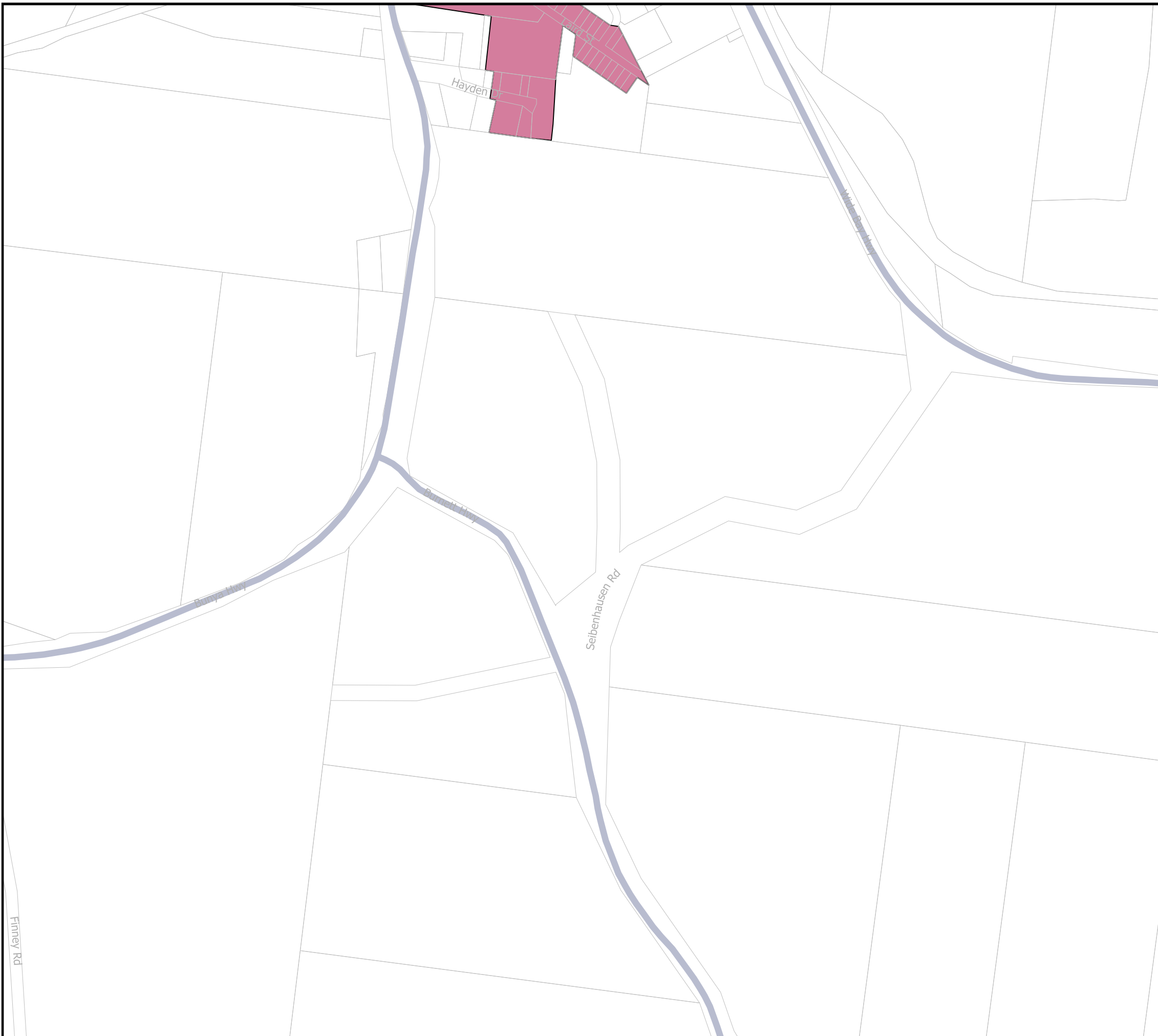
Scale 1:10000 1cm = 100m (on A3 print)



Transport - Trunk Pathways

Map: PFTI-TPW- 50

Version 3 Date: 15-03-2021





Gympie Regional Council Plans for Trunk Infrastructure

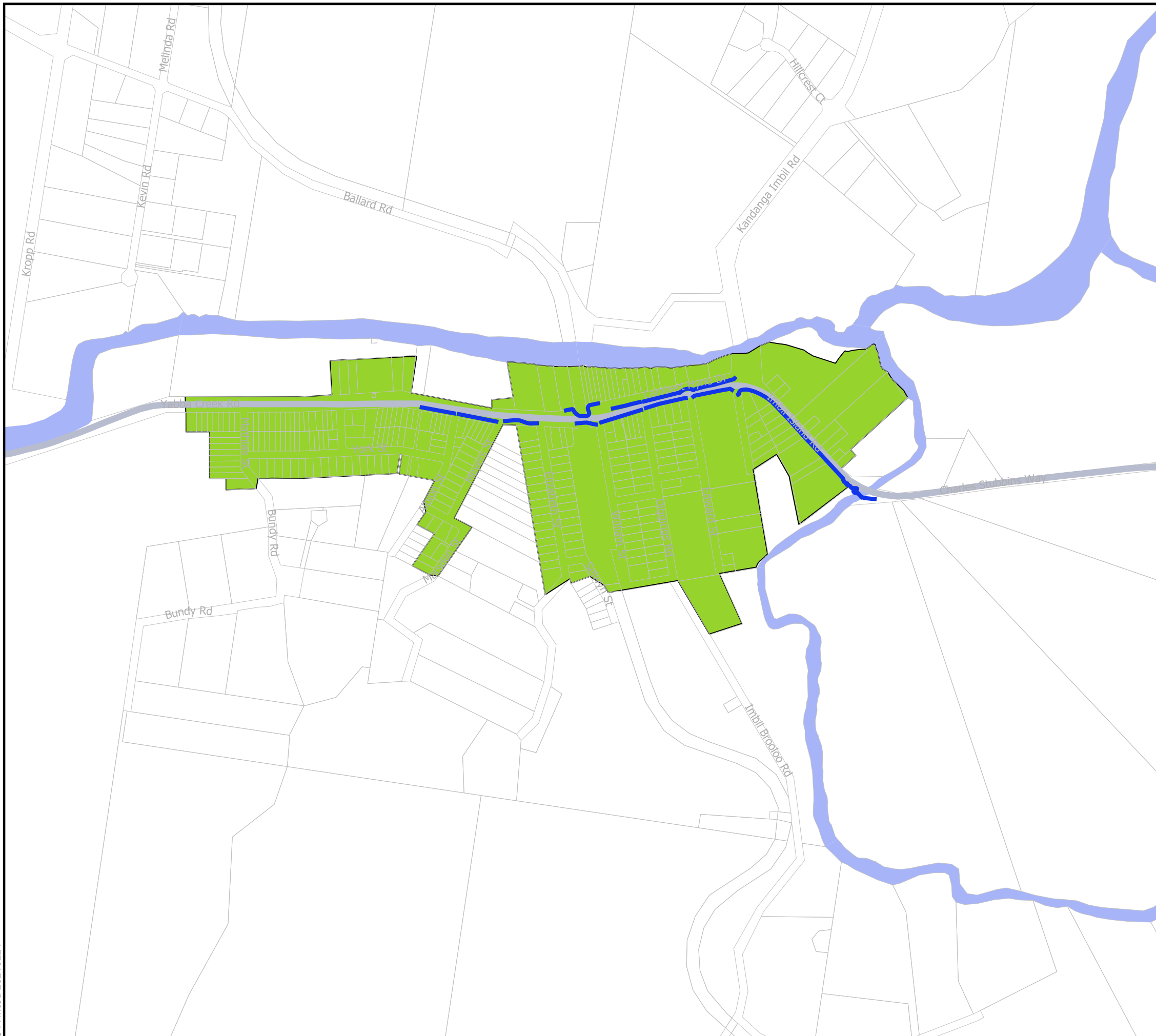
IMBIL

Legend

- Trunk Pathways Existing
- Trunk Pathways Future
- State Road Network

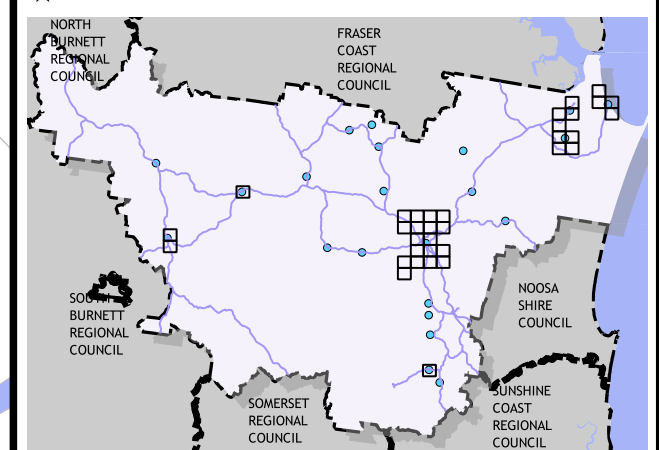
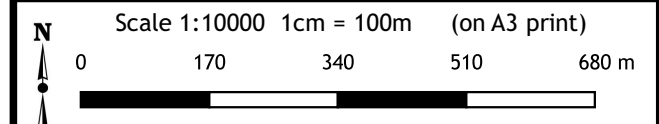
Transport Service Catchment

- Cooloola Coast
- Goomeri
- Gympie
- Imbil
- Kilkivan



Disclaimer
While every care is taken to ensure the accuracy of this map, Gympie Regional Council makes no representations or warranties about its accuracy, reliability, completeness or suitability for any particular purpose and disclaims all responsibility and all liability (including without limitation, liability in negligence) for all expenses, losses, damage (including indirect or consequential damage) and costs which might incur as a result of the data being inaccurate or incomplete in any way and for any reason.
© Copyright Gympie Regional Council 2016

Cadastral Disclaimer:
Despite Department of Environment and Resource Management (DERM)'s best efforts, DERM makes no representations or warranties in relation to the information, and, to the extent permitted by law, exclude or limit all warranties relating to correctness, accuracy, reliability, completeness or currency and all liability for any direct, indirect and consequential costs, losses, damages and expenses incurred in any way (including but not limited to that arising from negligence) in connection with any use of or reliance on the information.
© The State of Queensland (Dept of Environment and Resource Management (DERM)) 2016.
Map Grid of Australia (MGA) Zone 56 Geodetic Datum of Australia (GDA) 1994



Transport - Trunk Pathways
Map: PFTI-TPW- 62
Version 3 Date: 15-03-2021



Gympie Regional Council Plans for Trunk Infrastructure

WIDGEE

Legend

- Trunk Pathways Existing
- Trunk Pathways Future
- State Road Network

Transport Service Catchment

- Cooloola Coast
- Goomeri
- Gympie
- Imbil
- Kilkivan

Disclaimer

While every care is taken to ensure the accuracy of this map, Gympie Regional Council makes no representations or warranties about its accuracy, reliability, completeness or suitability for any particular purpose and disclaims all responsibility and all liability (including without limitation, liability in negligence) for all expenses, losses, damage (including indirect or consequential damage) and costs which might incur as a result of the data being inaccurate or incomplete in any way and for any reason.

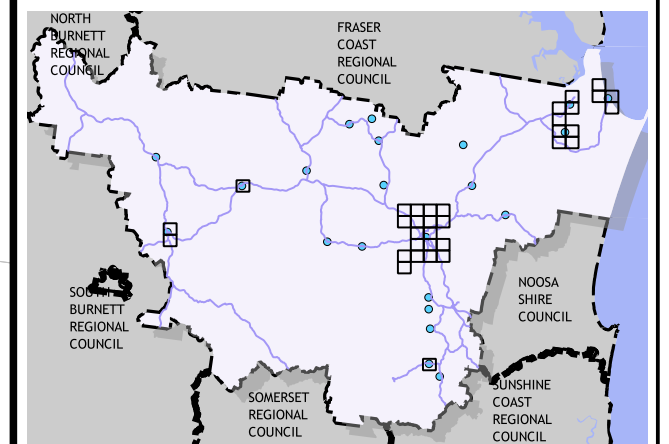
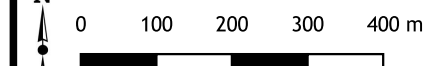
© Copyright Gympie Regional Council 2016

Cadastral Disclaimer:

Despite Department of Environment and Resource Management (DERM)'s best efforts, DERM makes no representations or warranties in relation to the information, and, to the extent permitted by law, exclude or limit all warranties relating to correctness, accuracy, reliability, completeness or currency and all liability for any direct, indirect and consequential costs, losses, damages and expenses incurred in any way (including but not limited to that arising from negligence) in connection with any use of or reliance on the information.

© The State of Queensland (Dept of Environment and Resource Management (DERM)) 2016.
Map Grid of Australia (MGA) Zone 56 Geodetic Datum of Australia (GDA) 1994

Scale 1:10000 1cm = 100m (on A3 print)



Transport - Trunk Pathways

Map: PFTI-TPW- 63

Version 3 Date: 15-03-2021