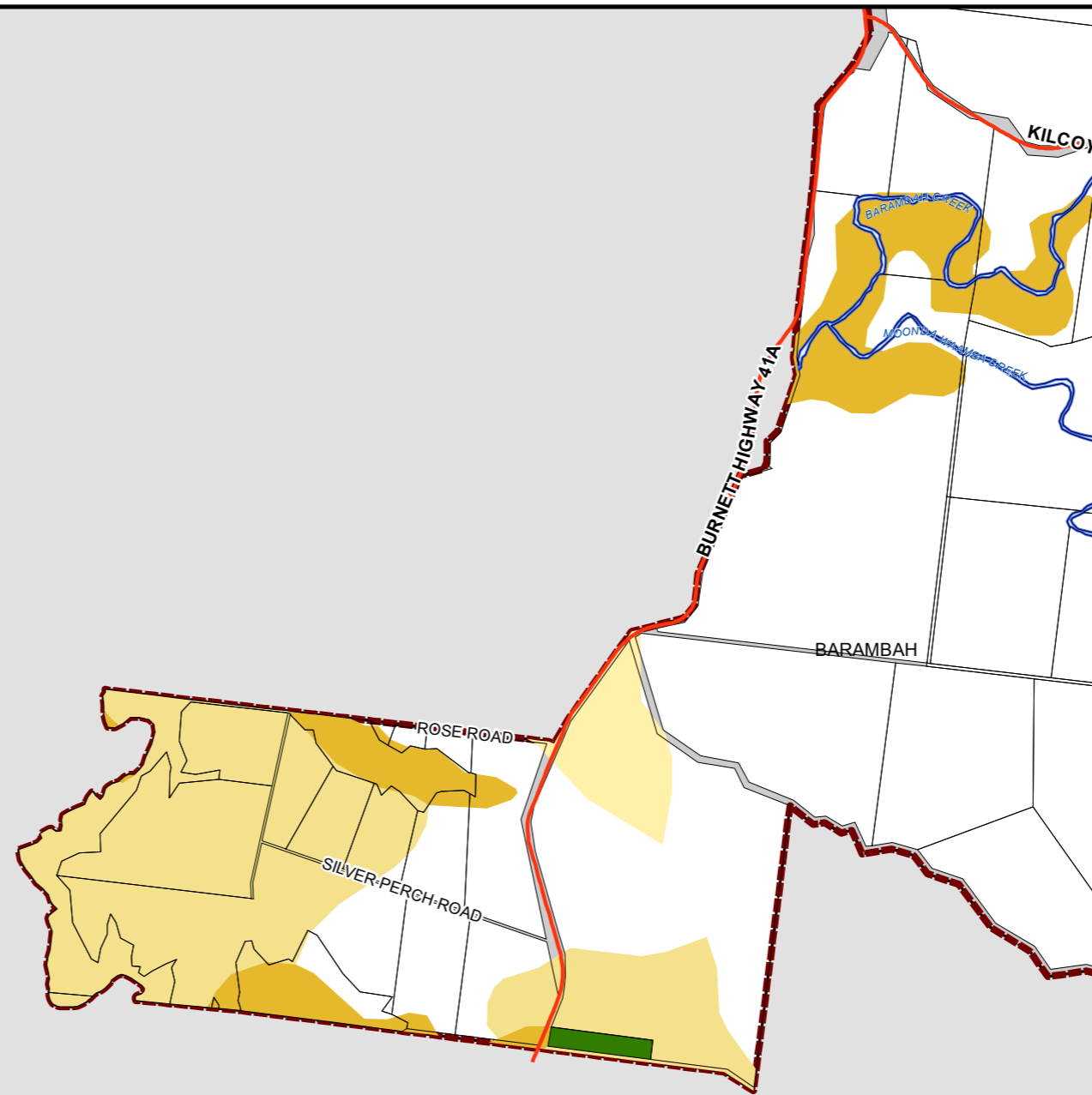


Cherbourg Aboriginal Shire Council

South Burnett Regional Council



Gympie Regional Council Planning Scheme Good Quality Agricultural Land Overlay



Development Constraints

- Good Quality Agricultural Land Class A
- Good Quality Agricultural Land Class B
- Good Quality Agricultural Land Class C
- Good Quality Agricultural Land Class D
- Urban Footprint
- Rural Living Area
- Water Resource Catchments
- State & Commonwealth Land

Cadastre

- DCDB ver. 05 June 2012
- Suburb or Locality Boundary
- Local Government Boundary
- Waterbodies & Waterways

Note - The areas shown under Water Resource Catchments are for advisory purposes only.

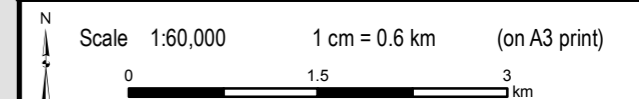
Disclaimer Declared Catchments
Seqwater is not responsible for any actions taken, on the basis of requested data, nor for any error in or omission in the requested data.
© Copyright 2012 Seqwater. All Rights Reserved

Disclaimer
While every care is taken to ensure the accuracy of this map, Gympie Regional Council makes no representations or warranties about its accuracy, reliability, completeness or suitability for any particular purpose and disclaims all responsibility and all liability (including without limitation, liability in negligence) for all expenses, losses, damage (including indirect or consequential damage) and costs which might incur as a result of the data being inaccurate or incomplete in any way and for any reason.
© Copyright Gympie Regional Council 2012.

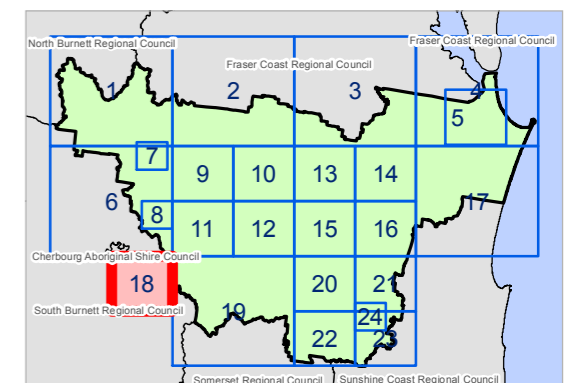
Cadastre Disclaimer:
Despite Department of Environment and Resource Management (DERM)'s best efforts, DERM makes no representations or warranties in relation to the Information, and, to the extent permitted by law, exclude or limit all warranties relating to correctness, accuracy, reliability, completeness or currency and all liability for any direct, indirect and consequential costs, losses, damages and expenses incurred in any way (including but not limited to that arising from negligence) in connection with any use of or reliance on the Information.
© The State of Queensland (Dept of Environment and Resource Management (DERM)) 2012.

Map Grid of Australia (MGA) Zone 56 Geodetic Datum of Australia (GDA) 1994

Note: The Gympie Regional Council Planning Scheme was adopted on 12 June 2013 and took effect 1 July 2013



GQAL OVERLAY MAP OVERVIEW



GQAL Overlay Map 18