



Gympie Regional Council Planning Scheme Flood Hazard Overlay

Development Constraints

- QRA Interim Floodplain
- GRC ARI 100 year Flood Study 2012

Cadastre

- DCDB ver. 05 June 2012
- Suburb or Locality Boundary
- Local Government Boundary
- Waterbodies & Waterways

Note - This map is adopted by Gympie Regional Council as a Natural Hazard Management Area (Flood) for the purpose of identifying a Defined Flood Event of 1% Annual Exceedance Probability.

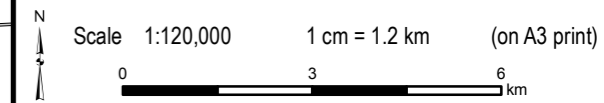
Flood Hazard Overlay Disclaimer
The Queensland Interim Floodplain Assessment Overlay (QFAO) has been developed to identify a floodplain area appropriate to alert consideration by a local government authority of a potential impact on the floodplain. It represents an estimate of areas potentially at threat of inundation by flooding. The data has been developed through a process of drainage subbasin analysis utilising data sources including 10 metre contours, historical flood records, vegetation and soils mapping and satellite imagery. This data represents an initial assessment and will be subject to refinement by respective Local Government Authorities. Not to be distributed to any other party. Only to be used internally for the purpose of validating and/or refining Queensland Interim Floodplain Assessment overlay
(C) State of Queensland 2012.

Disclaimer
While every care is taken to ensure the accuracy of this map, Gympie Regional Council makes no representations or warranties about its accuracy, reliability, completeness or suitability for any particular purpose and disclaims all responsibility and all liability (including without limitation, liability in negligence) for all expenses, losses, damage (including indirect or consequential damage) and costs which might incur as a result of the data being inaccurate or incomplete in any way and for any reason.
© Copyright Gympie Regional Council 2012

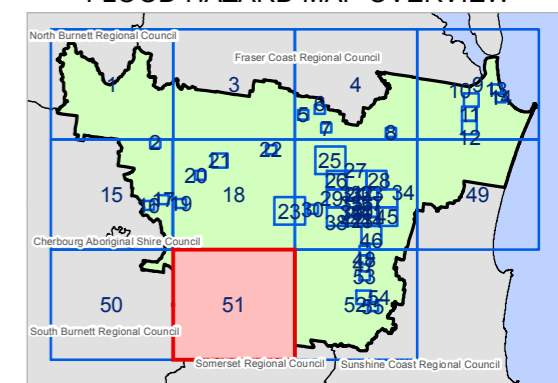
Cadastre Disclaimer:
Despite Department of Environment and Resource Management (DERM)'s best efforts, DERM makes no representations or warranties in relation to the Information, and, to the extent permitted by law, exclude or limit all warranties relating to correctness, accuracy, reliability, completeness or currency and all liability for any direct, indirect and consequential costs, losses, damages and expenses incurred in any way (including but not limited to that arising from negligence) in connection with any use of or reliance on the Information.
© The State of Queensland (Dept of Environment and Resource Management (DERM)) 2012.

Map Grid of Australia (MGA) Zone 56 Geodetic Datum of Australia (GDA) 1994

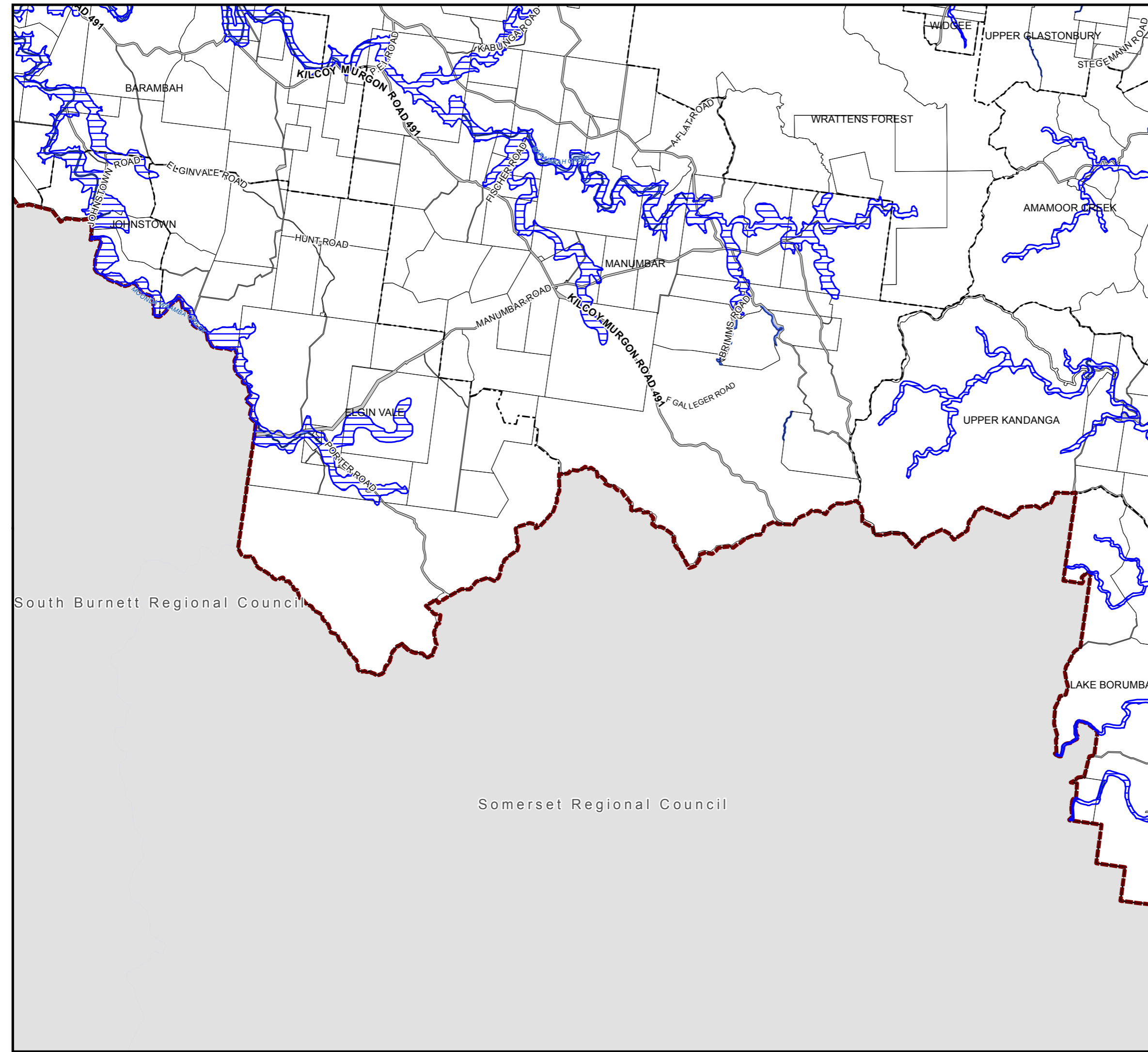
Note: The Gympie Regional Council Planning Scheme was adopted on 12 June 2013 and took effect 1 July 2013



FLOOD HAZARD MAP OVERVIEW



Flood Hazard Overlay Map 51



South Burnett Regional Council

Somerset Regional Council