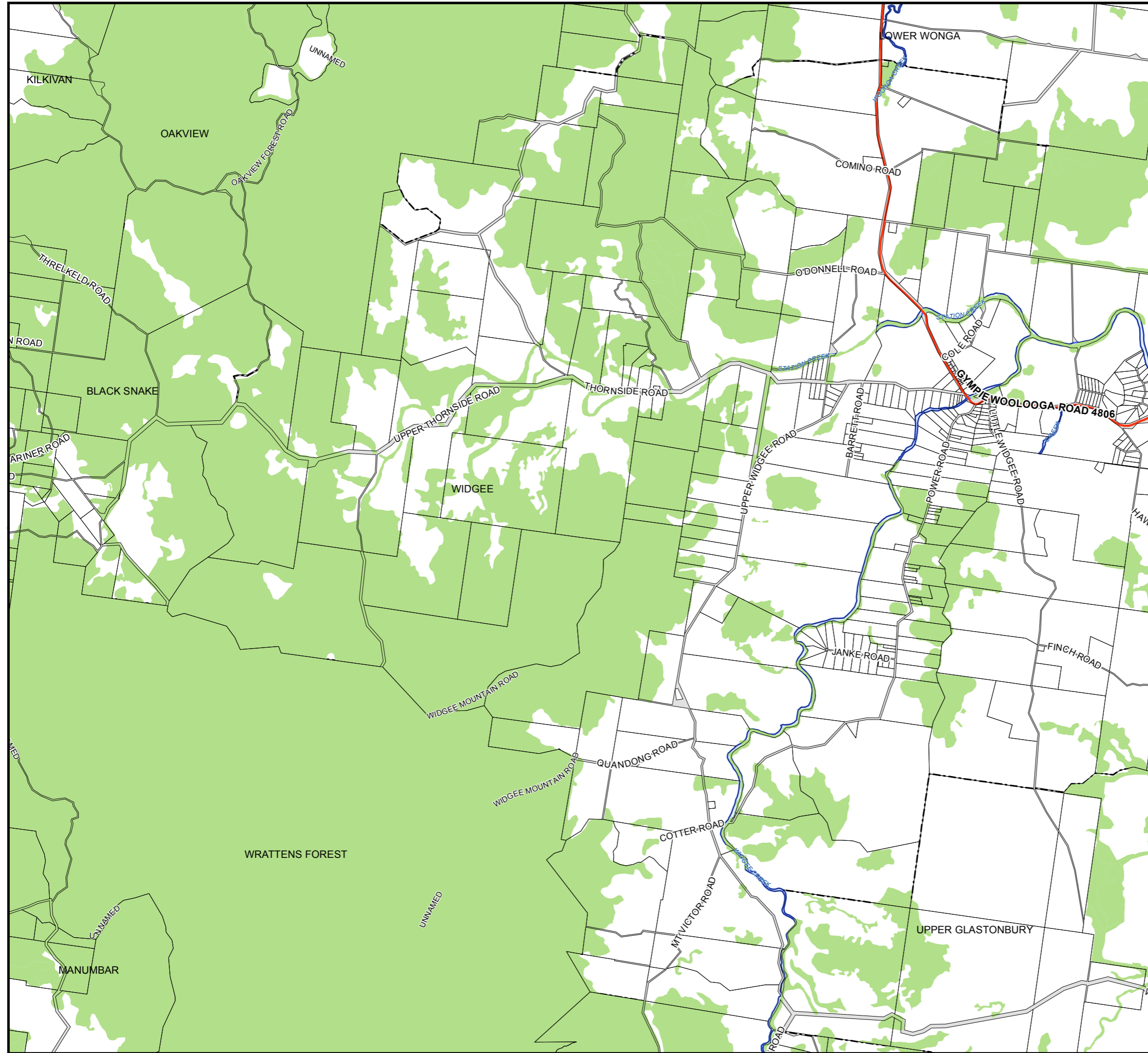




Gympie Regional Council Planning Scheme Conservation Significant Areas Overlay Map



Development Constraint

Conservation Significant Area

Cadastre

GRCmainroads_polyline

DCDB vs 05 June 2012

Waterbodies & Waterways

Local Government Boundary

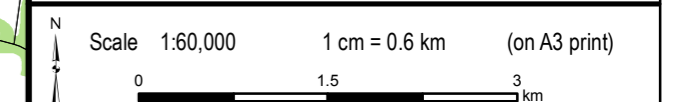
Disclaimer Conservation Significant Areas
Department of Natural Resources and Mines (DNRM) makes no representations or warranties about the accuracy, reliability, completeness, or suitability for any particular purpose of the data. By using the data you agree that Department of Natural Resources and Mines (DNRM) is under no liability for any loss or damage (including consequential damage) that you may suffer from use of the data. Further, you agree to continually indemnify the State of Queensland and Department of Natural Resources and Mines (DNRM) and their officers and employees against any loss, cost, expense, damage and liability of any kind (including consequential damage) arising directly or indirectly from or related to any claim relating to your use of the data or any product made from the data.

Disclaimer
While every care is taken to ensure the accuracy of this map, Gympie Regional Council makes no representations or warranties about its accuracy, reliability, completeness or suitability for any particular purpose and disclaims all responsibility and all liability (including without limitation, liability in negligence) for all expenses, losses, damage (including indirect or consequential damage) and costs which might incur as a result of the data being inaccurate or incomplete in any way and for any reason.
© Copyright Gympie Regional Council 2012.

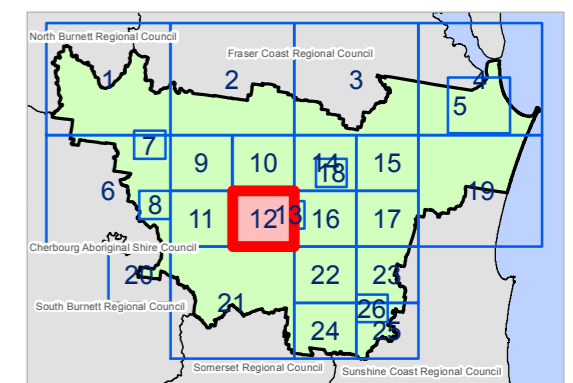
Cadastral Disclaimer:
Despite Department of Environment and Resource Management (DERM)'s best efforts, DERM makes no representations or warranties in relation to the information, and, to the extent permitted by law, exclude or limit all warranties relating to correctness, accuracy, reliability, completeness or currency and all liability for any direct, indirect and consequential costs, losses, damages and expenses incurred in any way (including but not limited to that arising from negligence) in connection with any use of or reliance on the information.
© The State of Queensland (Dept of Environment and Resource Management (DERM)) 2012.

Map Grid of Australia (MGA) Zone 56 Geodetic Datum of Australia (GDA) 1994

Note: The Gympie Regional Council Planning Scheme was adopted on 12 June 2013 and took effect 1 July 2013



CSA OVERLAY MAP OVERVIEW



CSA Overlay Map 12