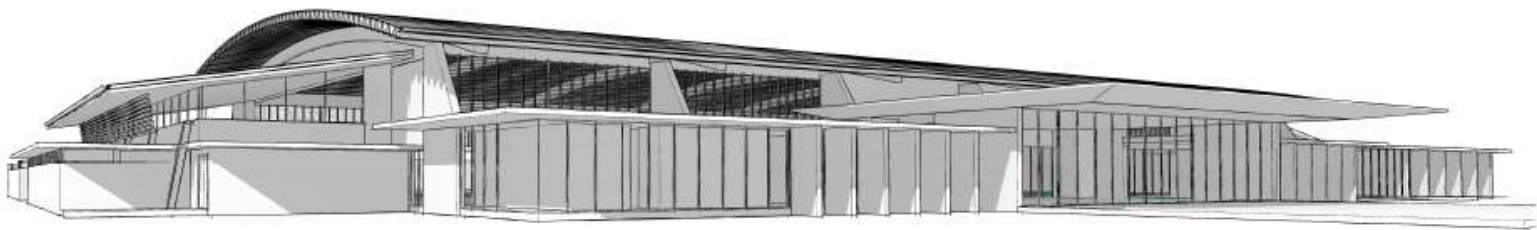


FEASIBILITY ASSESSMENT OVERVIEW

Gympie Regional Council has engaged an external consultant to assess the feasibility of developing a multipurpose indoor sports facility to service the Gympie region. The feasibility assessment is based on extensive consultation with the existing indoor sporting groups throughout the region, their associated peak bodies and the Gympie community.



Proposed Facility

- + Multipurpose 3-court stadium, with potential to expand in the future should demand exist.
- + Inclusion of commercial leisure-related spaces to offset operating costs.
- + Cater for sports, community and cultural events, including large trade shows, exhibitions and concerts that cannot currently be held indoors.

Need for a Multipurpose Indoor Centre

- + Identified in Council's Strategic Planning documents and supported by Corporate Plan 2017-2022.
- + The Pavilion cannot accommodate all indoor sports clubs.
- + Gympie is unable to host high-participation indoor sports events (e.g. a basketball regional championship) due to lack of courts.

Projected Usage

- + Immediate sports club use of 82.5 hours, up from 54.5 hours of existing sports activities (up 51%).
- + Long-term projection of 133 hours of formal sports use per week.
- + Additional use for school activities, school holidays programs, coaching clinics, fitness and leisure activities, meetings, community markets, concerts, large trade shows and exhibitions (that cannot be accommodated at The Pavilion).
- + Likely to attract nine (9) high-participation sports tournaments in the first year, growing to 18 events within five (5) years.

Preferred Location

- + No specific sites were identified as part of the study, however, a number of characteristics have been identified that will help Council to select the most suitable site in the future.

Construction and Operating Costs

- + Estimated construction cost of \$12.6 million, plus an estimated \$1 million for site works depending on the final location.
- + Several state and federal grant programs available to directly offset the cost to ratepayers.
- + Hire fees used in the modelling suggest a modest increase from existing hire rates.
- + Projected to operate with small loss of \$7,300 in the first year of operation, returning to a surplus within the first three (3) years, excluding depreciation.
- + The management model will be considered further during detailed planning of the facility.

Benefits to the Gympie Region

- + Economic & Tourism - nine (9) sports events in first year providing \$2.5M direct economic impact.
- + Social & Health – community connectedness, and improved health and education outcomes.
- + Participation – removing barriers for all sectors of the community to participate in physical activity.

There is a strong demand in the region for a multipurpose indoor centre to service the thriving indoor sports clubs and to host large conferences and concerts, with opportunity to create a centralised health and wellness hub to activate the facility during off-peak hours and increase financial sustainability in the long-term.