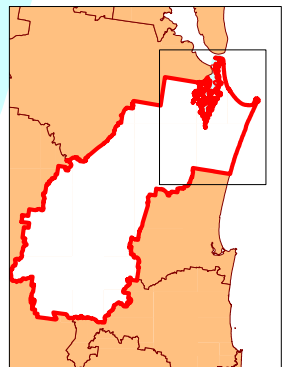


Notes

- (1) See meaning of "coastal management district" in schedule 14, Division 2 (Dictionary).
- (2) This overlay map is indicative only of the "coastal management district".
- (3) Beach Protection Authority Plan SC3371G shows "Cooloola Shire Erosion Prone Areas" that constitute the "coastal management district".
- (4) For the purposes of this planning scheme the seaward boundary of the "erosion prone area" is the seaward Shire boundary.
- (5) The landward boundary of the "erosion prone area" must be determined by reference to Beach Protection Authority Plan SC3371G. It may be:
 - (i) a distance in metres measured landward from the seaward toe of the frontal dune; or
 - (ii) the plan position of the highest astronomical tide (HAT).



**INDICATIVE COASTAL MANAGEMENT DISTRICT
OVERLAY MAP OM3**

Indicative Coastal Management District
* See Notes

NORTH Scale 1:125,000

31 March, 2005

Cadastral disclaimer:- while every care is taken to ensure the accuracy of this data, Cooloola Shire Council and the Department of Natural Resources and Mines make no representations or warranties about its accuracy, reliability, completeness or suitability for any particular purpose and disclaims all responsibility and all liability (including without limitation liability in negligence) for all expenses, losses, damage (including indirect or consequential damage) and costs which might incur as a result of the data being inaccurate or incomplete in any way and for any reason.