




Cooloolola Shire Council

Planning Scheme Amendment
2010, No. 1

28 January, 2010

TITLE:	Planning Scheme Amendment 2010, No. 1
AUTHOR:	Gympie Regional Council
SOURCE DOCUMENTATION:	Cooloola Shire Planning Scheme – Zoning Map ZM1 Sheet (19)
Report:	p:\public\data\ipa planning scheme\csc planning scheme 2005\scheme amendments\amdmt2010_no. 1 adopted 28_01_10 Certified.doc
STATUS:	ADOPTED
	Adopted 27 January, 2010
DATE COMMENCED:	28 January, 2010


K.A. Mason
Chief Executive Officer

Integrated Planning Act 1997

COOLOOLA SHIRE COUNCIL PLANNING SCHEME 2005

PLANNING SCHEME AMENDMENT 2010, NO. 1

Adoption:

Gympie Regional Council adopted this planning scheme amendment for the former Cooloola Shire Council Planning Scheme on the 27 January, 2010.

Commencement:

This planning scheme amendment took effect on 28 January, 2010.

Amendment of Gympie Planning Area, Zoning Map ZM1 Sheet (19):

Cooloola Shire Council Planning Scheme is amended by:

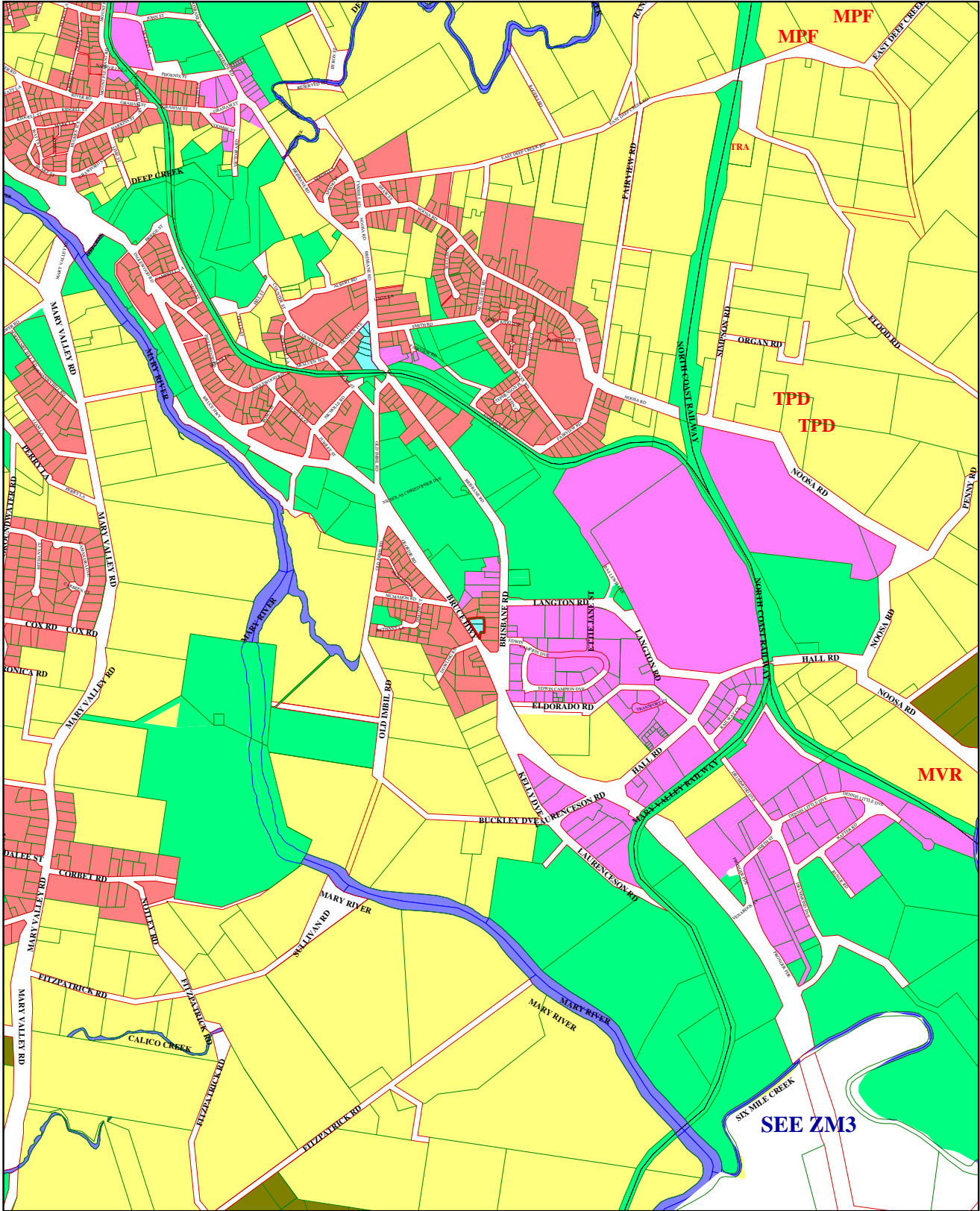
‘Gympie Planning Area, Zoning Map ZM1 Sheet (19) dated 23 March, 2004’—

omit, insert—

‘Gympie Planning Area, Zoning Map ZM1 Sheet (19) dated 28 January, 2010’



Adjoins Sheet 18



Adjoins Sheet 20

Adjoins Sheet 23

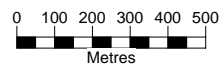
GYMPIE PLANNING AREA

Zones

- Rural
- Community
- Rural Residential
- Housing
- Commercial
- Industry

Preferred Use Areas

- Highway Services



1:20000

Note - the following uses occur on premises indicated on the zoning map -

- TPD Transport Depot
- MVR Motor Vehicle Racetrack

ZONING MAP ZM1 Sheet 19

28 January 2010



Cadastral Disclaimer:
 While every care is taken to ensure the accuracy of this data, Cooloola Shire Council and the Department of Natural Resources and Mines make no representations or warranties about its accuracy, reliability, completeness or suitability for any particular purpose and disclaims all responsibility and all liability (including without limitation liability in negligence) for all expenses, losses, damage (including indirect or consequential damage) and costs which might incur as a result of the data being inaccurate or incomplete in any way and for any reason. Datum is in accordance with GDA94 Zone 56.